



Workholding
Solutions

THE TOOLS TO TRUST





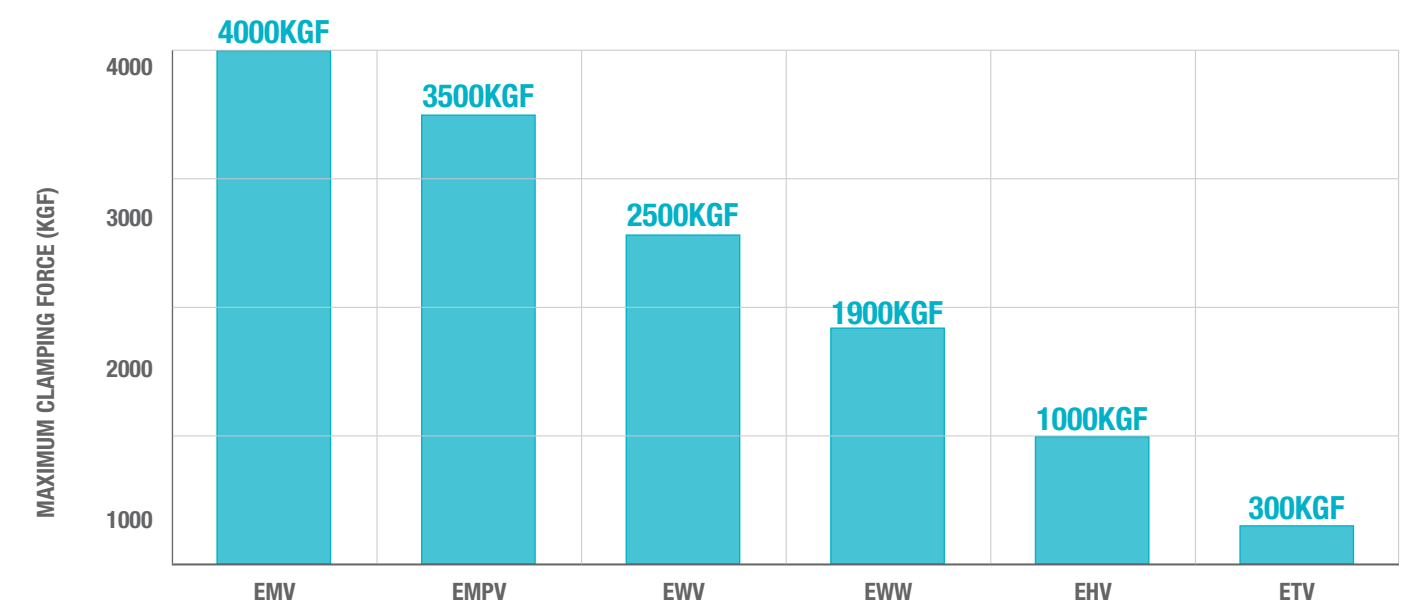
EMV Engineer's Vices

High quality cast iron Vices capable of generating up to 4000 Kgf clamping force for general metal working applications.



Part No.	Jaw Width	Throat Depth	Opening	Clamping Force (Max)	Net Weight
EC-EMV1	75mm	48mm	82mm	1500kgf	4.8kg
EC-EMV3	100mm	63mm	109mm	2000kgf	9.3kg
EC-EMV5	125mm	73mm	136mm	2500kgf	15.8kg
EC-EMV6	150mm	86mm	168mm	3000kgf	24.2kg
EC-EMV8	200mm	103mm	208mm	4000kgf	38.1kg

Vices - Maximum Clamping Forces



Workholding Solutions

Engineer's Vice

EC-EMVSB Swivel Bases

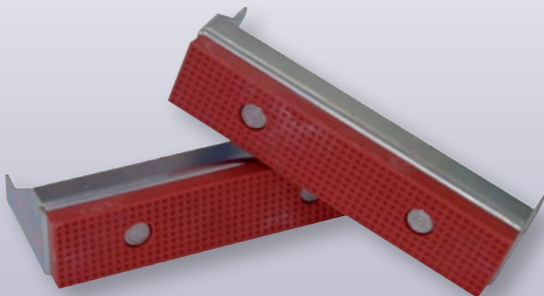
- Includes three mount holes for attaching to a workbench
- For use with Eclipse Mechanics' Vices



Part No.	Size	For use with:	Pack Qty
EC-EMVSB-1	Swivel Base for 75mm Vice	EMV-1	10
EC-EMVSB-3	Swivel Base for 100mm Vice	EMV-3	10
EC-EMVSB-5	Swivel Base for 128mm Vice	EMV-5	10
EC-EMVSB-6	Swivel Base for 150mm Vice	EMV-6	8
EC-EMVSB-8	Swivel Base for 200mm Vice	EMV-8	8

EC-EFG Fibre Grips

- A range of high quality fibre grips for use with Eclipse Mechanics' Vices
- Prevents damage to workpieces with soft or polished surfaces
- Supplied in pairs



Part No.	Size	For use with	Pack Qty
EC-EFG3	100mm	EMV-3	10
EC-EFG5	128mm	EMV-5	10
EC-EFG6	150mm	EMV-6	10
EC-EFG8	200mm	EMV-8	10

EC-EMV-JPS Spare Jaw plates

- Replacement hardened steel jaw plates with fine knurl grip pattern to fit EMV series vices.
- Supplied as a pair with 4 screws for easy fitting.

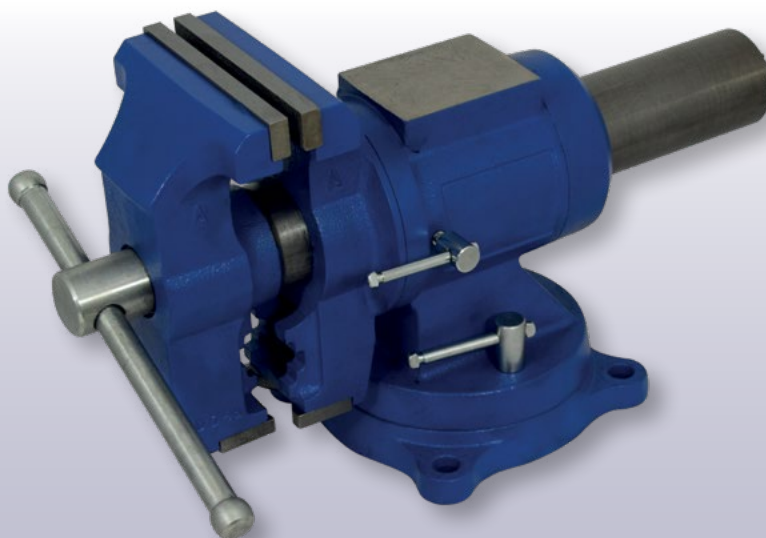


Part No.	Description
EC-EMV-1JPS	Spare jaw plates and screws for EMV-1
EC-EMV-3JPS	Spare jaw plates and screws for EMV-3
EC-EMV-5JPS	Spare jaw plates and screws for EMV-5
EC-EMV-6JPS	Spare jaw plates and screws for EMV-6
EC-EMV-8JPS	Spare jaw plates and screws for EMV-8

EC-EMPV-5 Multi-Purpose Vice

Strong and durable precision cast iron body with hardened steel jaw plates. Up to 3500kg of clamping force is achievable for medium to heavy duty metal and wood working and pipe jaws are included for specific pipe work.

- The moving body is capable of rotating 360° and it also features a 360° swivel base for flexible working.
- It includes a convenient anvil at the rear of the body for beating and hammering workpieces.

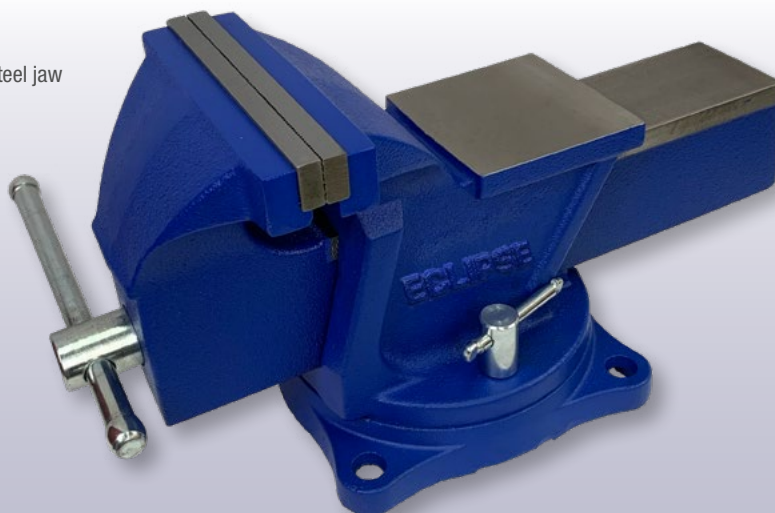


Part No.	Jaw Width	Throat Depth	Opening	Clamping Force (Max)	Net Weight
EC-EMPV-5	125mm	67mm	125mm	3500kgf	15.0kg

EC-EWV150S Swive Base Workshop Vice

The Workshop Swivel Vice, it is ideal for general holding and workshop applications.

- Strong and durable precision cast iron body with hardened steel jaw plates. Up to 2500kg of clamping force is achievable for medium duty working.
- Features a 120° swivel base
- It includes a convenient anvil at the rear of the body for beating and hammering workpieces.



Part No.	Jaw Width	Throat Depth	Opening	Clamping Force (Max)	Net Weight
EC-EWV125S	125mm	60mm	125mm	2000kgf	9.2kg
EC-EWV150S	150mm	68mm	152mm	2500kgf	13.2kg

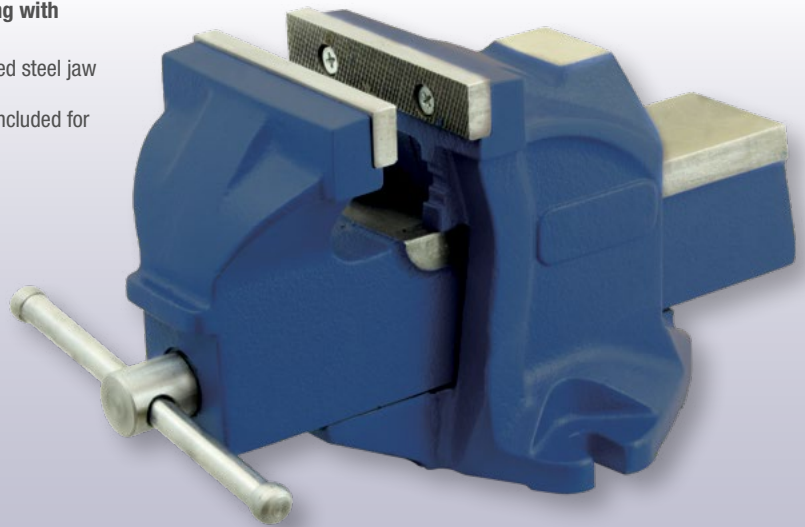
Workholding Solutions

Vices

EC-EHV-3 Pipe Jaw Workshop Vice

Compact Cast Iron workshop vice for medium duty working with built in pipe jaws.

- Strong and durable precision cast iron body with hardened steel jaw plates. Up to 1000kg of clamping force is achievable for medium duty working and pipe jaws are included for specific pipe work.
- It includes a convenient anvil at the rear of the body for beating and hammering workpieces.

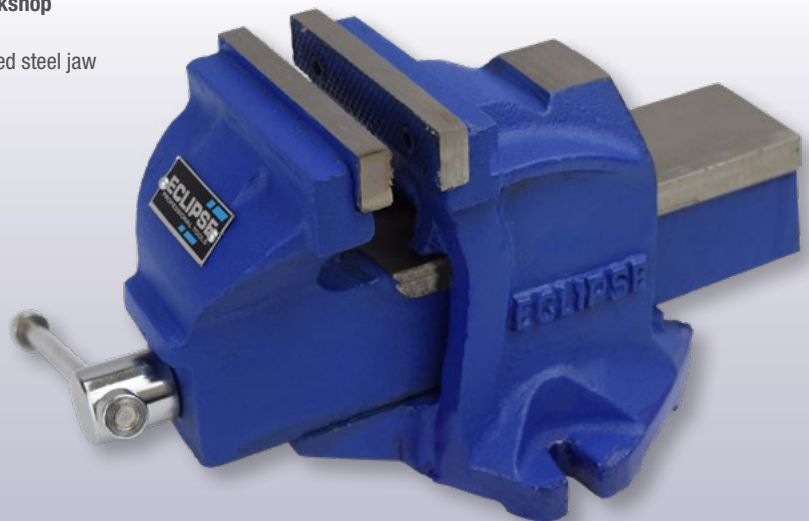


Part No.	Jaw Width	Throat Depth	Opening	Clamping Force (Max)	Net Weight
EC-EHV-3	100mm	60mm	100mm	1000Kgf	7.6kg

EC-EWV100 Workshop Vice

The Workshop Vice, it is ideal for general holding and workshop applications.

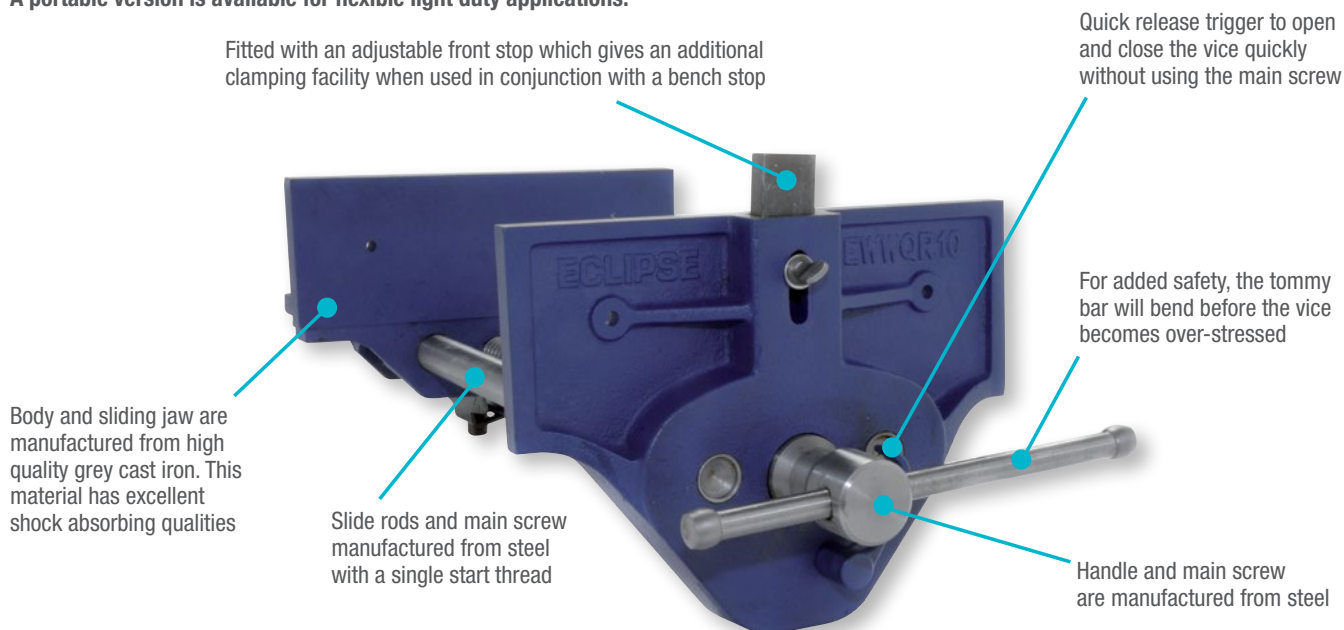
- Strong and durable precision cast iron body with hardened steel jaw plates. Up to 1000kg of clamping force is achievable for medium duty working.
- It includes a convenient anvil at the rear of the body for beating and hammering workpieces.



Part No.	Jaw Width	Throat Depth	Opening	Clamping Force (Max)	Net Weight
EC-EWV100	100mm	65mm	100mm	1000kgf	7.8kg

EC-EWWQR Quick Release Woodworking Vices

High quality Cast Iron vices for general woodworking applications. Available in quick release and plain screw options.
A portable version is available for flexible light duty applications.

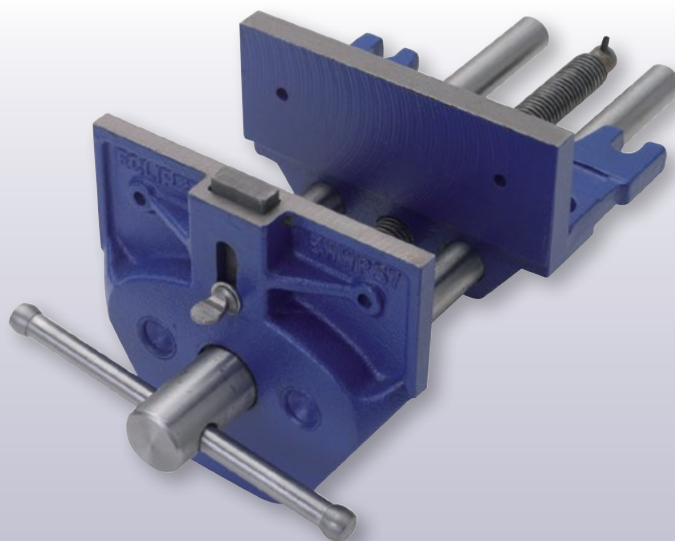


Part No.	Jaw Width	Throat Depth	Opening	Clamping Force (Max)	Net Weight
EC-EWWQR7	178mm	90mm	202mm	1900Kgf	9.4kg
EC-EWWQR9	230mm	106mm	260mm	1900Kgf	15.5kg

EC-EWWPS Plain Screw Woodworking Vices

Plain screw mechanism works through a separate unbreakable nut housed beneath the body seating, to ensure the constant alignment of the screw mechanism.

- Precision machined grey cast iron body and front to ensure a smooth, parallel action. Fitted with an adjustable front stop, or dog, that gives an additional clamping facility when used with a bench stop, to provide a normal vice and a tail vice in one tool.
- To increase safety, the fused tommy bar will bend before the vice can become over-stressed.
- Up to 1900Kgf clamping force is achievable and is ideal for holding large pieces of wood for cutting and gluing



Part No.	Jaw Width	Throat Depth	Opening	Clamping Force (Max)	Net Weight
EC-EWWPS7	178mm	80mm	202mm	1900kgf	9.4kg

Workholding Solutions

Vices

EC-E0V150 Offset Vice

The Offset Vice, is ideal for industrial, automotive and workshop applications.

- Strong and durable precision cast iron body with precision machined slideways.
- Long hardened steel jaw plates to allow the holding of long work pieces.
- It includes a convenient anvil at the rear of the body for beating and hammering workpieces..

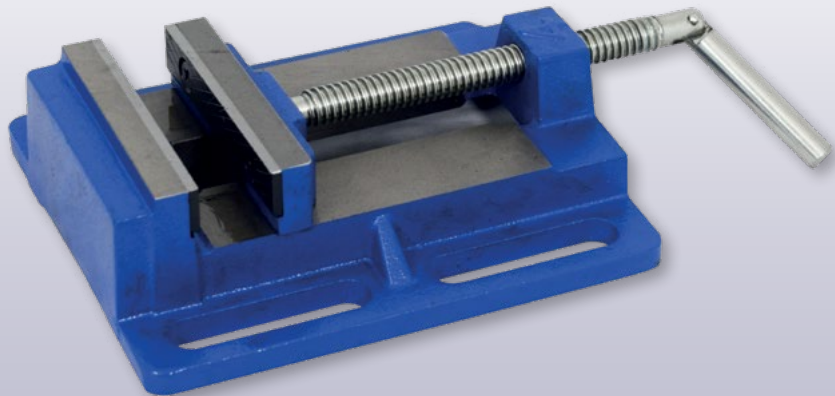


Part No.	Jaw Width	Throat Depth	Opening	Clamping Force (Max)	Net Weight
EC-E0V150	150mm	N/A	200mm	2200kgf	25.0kg

EC-EDPV-4 Drill Press Vice

Designed for use with drill presses and pillar drills, ideal for an engineering workshop or tool room.

- Manufactured from high quality grey cast iron for strength and durability with a slotted base for easy installation and positioning.



Part No.	Jaw Width	Throat Depth	Opening	Clamping Force (Max)	Net Weight
EC-EDPV-4	100mm	25mm	110mm	600kgf	3.2kg



**300KG
CLAMPING
FORCE**



Eclipse Clamps

Eclipse F clamps are suitable for a wide range of medium and heavy duty wood and metal working applications.

With 2 throat sizes available, we have your clamping needs covered.

Workholding Solutions

F Clamps

EC-SC80 80mm Throat Depth Screw Clamps

80mm throat depth capacity clamps, manufactured to DIN5117 standard clamps with an average clamping force of 300kg

- The sliding head quickly sets the clamp to the required capacity
- Serrated grooves on the corrosion resistant nickel plated bar prevent slippage in use
- The cast iron malleable heads offer maximum strength and the wooden handle provides a firm and comfortable grip
- Non marring plastic grips to protect workpiece
- End stop prevents sliding head from coming off bar
- 80mm throat depth



Part No.	Clamping Capacity	Pack Qty
EC-SC80R6	150mm	10
EC-SC80R8	200mm	10
EC-SC80R10	250mm	10
EC-SC80R12	300mm	10
EC-SC80R16	400mm	10
EC-SC80R24	600mm	6
EC-SC80R32	800mm	6

EC-SCR 120mm Throat Depth Screw Clamps

DIN5117 standard clamps with an average clamping force of 300kg.

- The sliding head quickly sets the clamp to the required capacity
- Serrated grooves on the corrosion resistant nickel plated bar prevent slippage in use
- The cast iron malleable heads offer maximum strength and the wooden handle provides a firm and comfortable grip
- Non marring plastic grips to protect workpiece
- End stop prevents sliding head from coming off bar
- 120mm throat depth

Part No.	Clamping Capacity	Pack Qty
EC-SCR8	200mm	10
EC-SCR10	250mm	10
EC-SCR12	300mm	10
EC-SCR16	400mm	10
EC-SCR24	600mm	10
EC-SCR32	800mm	6
EC-SCR40	1000mm	6



Eclipse One Handed Bar Clamps

Introducing the family of One-Handed Bar Clamps.

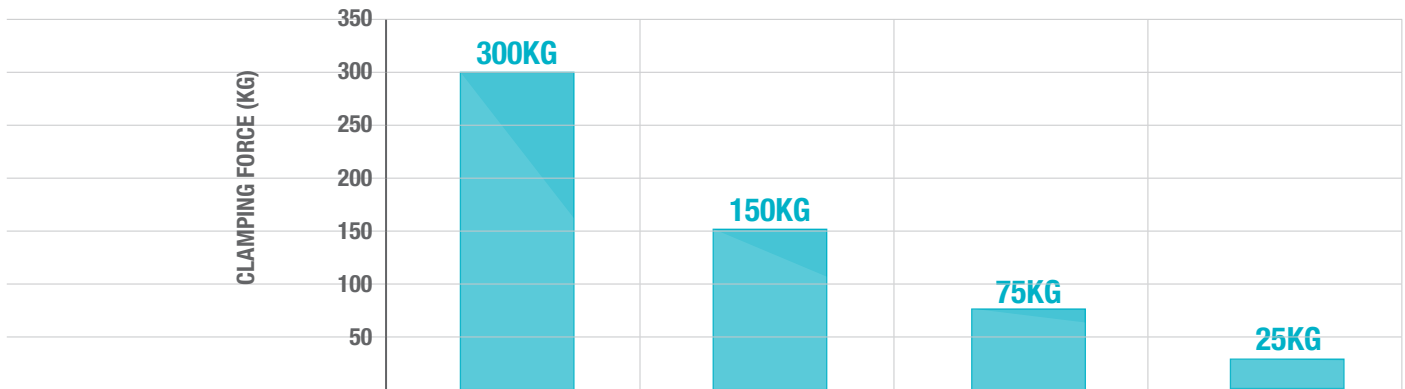
Choose the best option for your needs from the Heavy-Duty, Original, Mini and Micro series, designed and developed to offer high quality, performance and value.

Eclipse One-Handed Bar Clamps are tools to trust.



Workholding Solutions

One Handed Bar Clamps

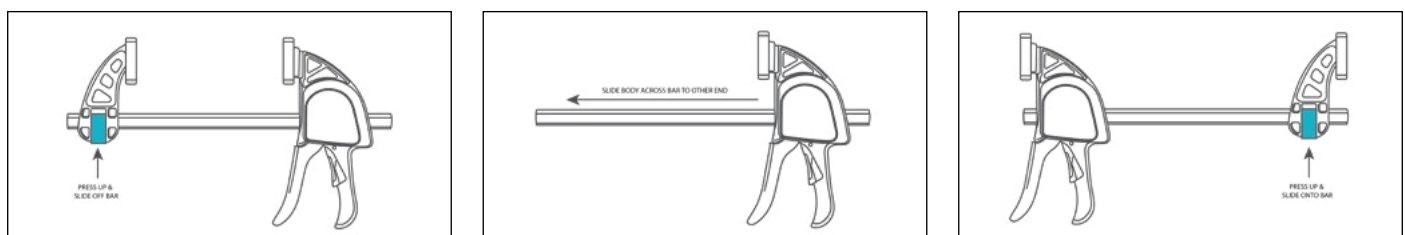


Part no	EOHBC-HD Series	EOHBC Original Series	EOHBC Mini Series	EOHBC Micro Series
Clamping force	300kg	150kg	75kg	25kg
Clamp capacity	150 – 900mm	150 – 900mm	150 – 300mm	100mm
Throat depth	85mm	85mm	60mm	36mm
Installation / Demolition / Heavy-Duty Clamping	★★★★	★	-	-
Medium duty clamping	★★	★★★★	-	-
Temporary hold-down quick clamping	★★	★★★★	★★★★	★★★★
Craft work & light duty clamping	-	★★	★★★★	★★★★
Work in small confined spaces	-	★	★★	★★★★
Use as a spreader	YES	YES	YES	NO

★ GOOD / ★★ BETTER / ★★★ BEST



Quick change spreader function on heavy duty, original & mini - no nuts or screws to adjust, just press and slide





**300KG
CLAMPING
FORCE**

Eclipse Heavy Duty One Handed Bar Clamps

A family of Heavy Duty One Handed Bar Clamps for a wide range of heavy duty to light duty wood and metal working applications.



Workholding Solutions

Heavy Duty One Handed Bar Clamps

EC-EOHBC-HD Heavy Duty One Handed Bar Clamps and Spreaders

Lightweight Aluminium frames and carbon steel bar are strong and durable and the clamps are capable of achieving up to 300 kg of sustainable holding force and are ideal for heavy duty work holding applications.

- The quick release insert trigger enables the clamp to be quickly positioned and released, whilst the easy push button system allows quick change from a clamp to a spreader.
- The removable pads stay fixed to the clamp giving an even distribution of clamping force across the workpiece protecting it from marking damage.

Throat
Depth
85mm



Part No.	Clamping Capacity	Min Spreading Capacity	Max Spreading Capacity	Pack Qty
EC-EOHBC6-HD	150mm	168mm	355mm	6
EC-EOHBC12-HD	300mm	168mm	507mm	6
EC-EOHBC18-HD	450mm	168mm	660mm	6
EC-EOHBC24-HD	600mm	168mm	813mm	6
EC-EOHBC36-HD	900mm	168mm	1117mm	6
EC-BCPADHD	SPARE PADS 2 PACK			1

EC-EOHBC-DECK Deck Tool for One Handed Bar Clamps

Ideal to achieve accurate alignment & spacing when decking

- Converts one handed bar clamp to a deck clamp.
- Quickly and easily attached



Part No.	Pack Qty
EC-EOHBC6-DECK	6

150KG
CLAMPING
FORCE

Eclipse One Handed Bar Clamps

A family of One Handed Bar Clamps for a wide range of heavy duty to light duty wood and metal working applications.



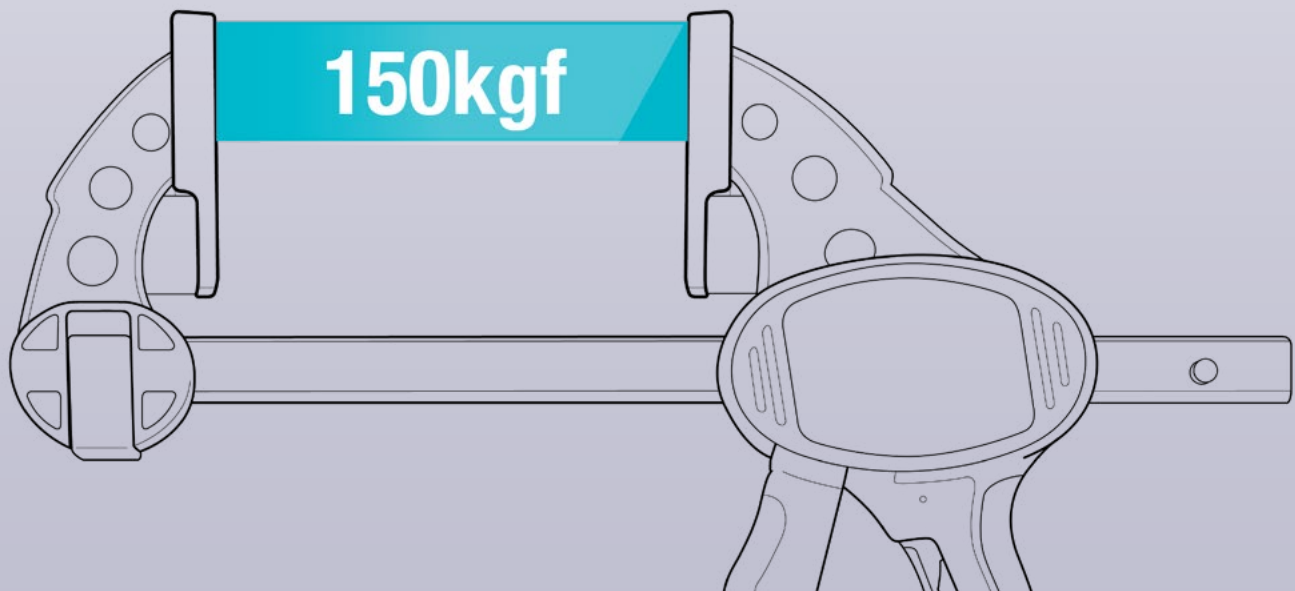
Workholding Solutions

Original EOHB Clamps

EC-EOHBC Original Series One Handed Bar Clamps & Spreaders

Average clamping force of 150kg.

- Quick release trigger enables the clamp to be quickly positioned and released, whilst the jaw release clip mechanism allows the jaw to be removed and re-attached to the other end of the bar, thus converting the clamp into a spreader.
- The carbon steel bar and reinforced nylon body make it both tough and durable, whilst the ergonomically designed, soft feel pistol grip handle fits easily into the hand.
- Toe-in feature means that, when fully closed, the jaws only meet at the top, thus providing an even clamping force across the whole depth of the workpiece. Non-marking pads firmly grip and protect the workpiece.



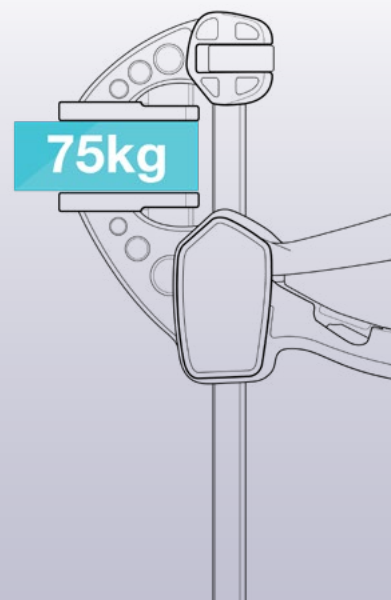
Part No.	Clamping Capacity	Min Spreading Capacity	Max Spreading Capacity	Pack Qty
EC-EOHBC6	150mm	168mm	340mm	20
EC-EOHBC12	300mm	168mm	495mm	12
EC-EOHBC18	450mm	168mm	645mm	12
EC-EOHBC24	600mm	168mm	800mm	12
EC-EOHBC36	900mm	168mm	1105mm	12
EC-BCPAD	SPARE PADS 2 PACK			1

EC-EOHBC-MINI Mini One Handed Bar Clamps

Strong plastic construction and carbon steel bar are strong and durable and allow the MINI clamp to achieve up to 75 kg

- Ideal for small wood working projects, working in confined spaces and delicate work requiring light pressure.
- Easy push button system and allows a quick change from a clamp to a spreader.
- The quick release insert trigger enables the clamps to be quickly positioned and released and the removable pads stay fixed to the clamp giving an even distribution of clamping force across the workpiece protecting it from marking damage.

Throat
Depth
60mm



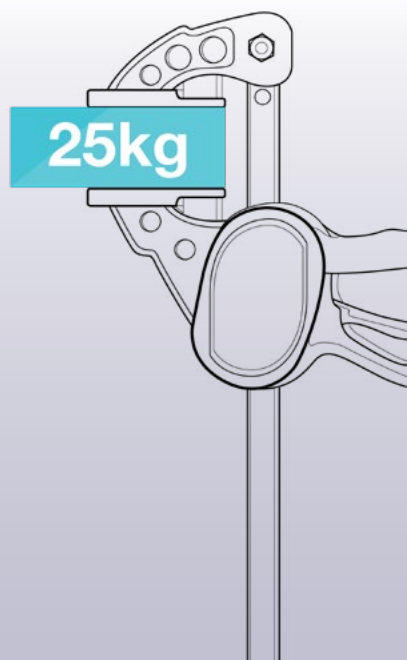
Part No.	Clamping Capacity	Min Spreading Capacity	Max Spreading Capacity	Pack Qty
EC-EOHBC6-MINI	150mm	123mm	275mm	16
EC-EOHBC12-MINI	300mm	123mm	427mm	16

EC-EOHBC-MICRO Micro One Handed Bar Clamps

Strong plastic construction and carbon steel bar are strong and durable and allow the MICRO clamp to achieve up to 25kg clamping force.

- They are ideal for small wood working projects, working in confined spaces and delicate work requiring light pressure.
- The quick release insert trigger enables the clamps to be quickly positioned and released and the removable pads stay fixed to the clamp giving an even distribution of clamping force across the workpiece protecting it from marking damage.

Throat
Depth
36mm



Part No.	Clamping Capacity	Min Spreading Capacity	Max Spreading Capacity	Pack Qty
EC-EOHBC4-MICRO	100mm	N/A	N/A	20

Workholding Solutions

Spring Clamps



SJ-SC Spring Clamps

Average clamping force of 50kg

- Heavy duty clamping force spring clamps with a chrome plated all steel construction
- Vinyl soft grip on clamping end allows for strong non slip clamping
- Vinyl soft grip handles for maximum comfort.



Part No.	Clamping Capacity	Pack Qty
SJ-SC100	100mm	2
SJ-SC150	150mm	2
SJ-SC225	225mm	2

Eclipse G Clamps

Eclipse has a range of heavy duty G clamps perfect for Industrial applications.

G-clamp perfect for holding wood or metal workpieces, and often used in, but are not limited to, carpentry and welding.

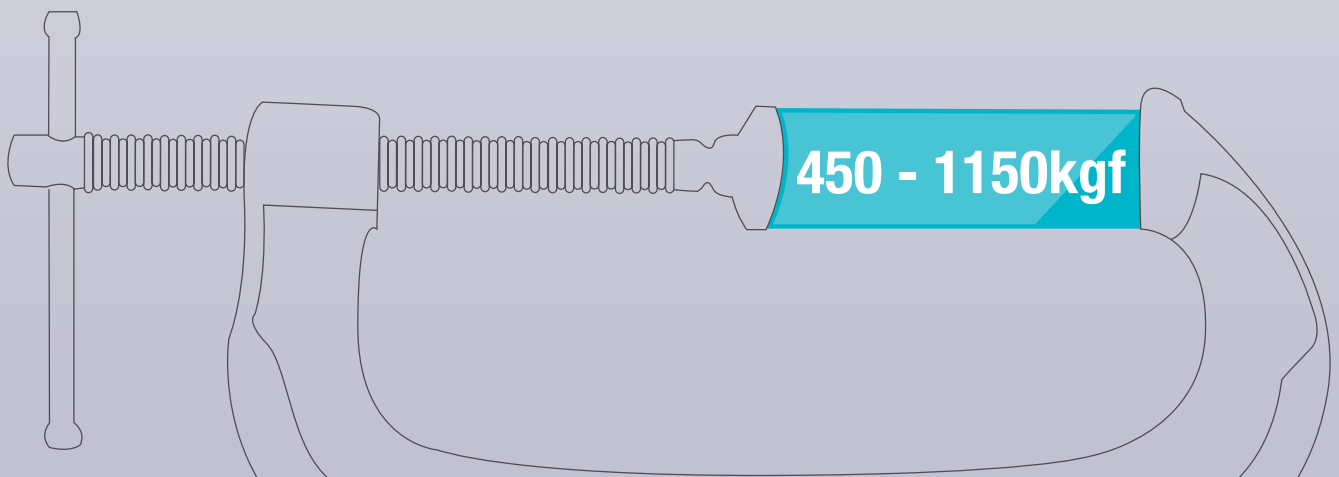
Workholding Solutions

G Clamps

EC-E20 Heavy Duty G-Clamps

Ideal for medium to heavy duty wood and metal working applications

- Can achieve a clamping force up to 450 - 1136 Kgf depending on the size
- Guaranteed unbreakable malleable iron frame with a fast action twin start rolled acme thread
- Steel swivel shoe applies an even pressure, even on angled surfaces
- Tommy bar will bend before the frame can become over-stressed.



Part No.	Clamping Capacity	Frame Proof Loads	Pack Qty
EC-E20-3	75mm	455kg	6
EC-E20-4	100mm	545kg	6
EC-E20-6	150mm	636kg	6
EC-E20-8	200mm	773kg	2
EC-E20-10	250mm	773kg	2
EC-E20-12	300mm	1136kg	2

**350KG
CLAMPING
FORCE**

Eclipse General Purpose Metalworking Clamp

The Eclipse range of General Purpose Metalworking Clamps are ideal for general metal working and welding applications.

Available in a range of five sizes capable of achieving up to 350 kgf of clamping force.

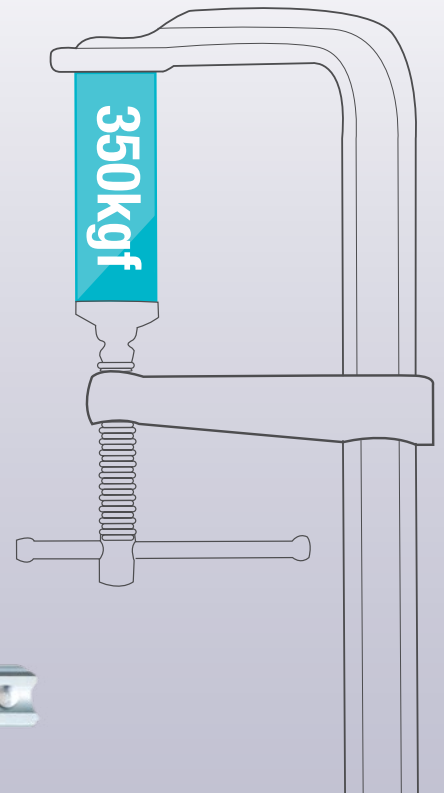
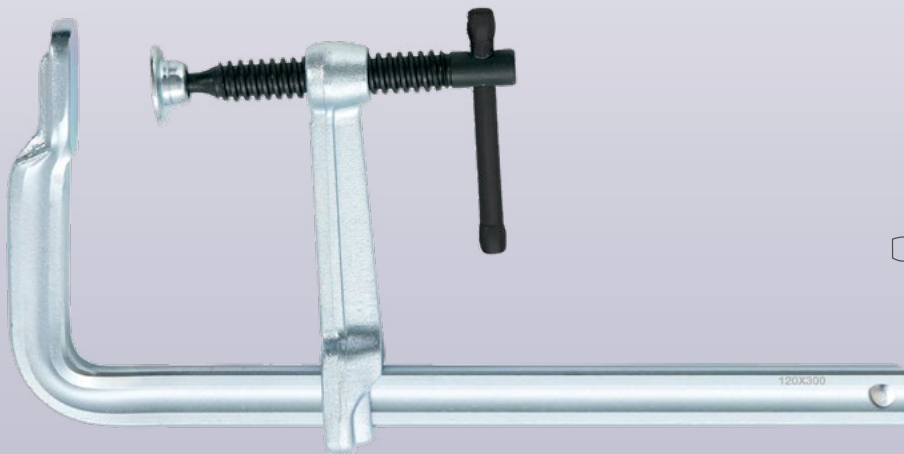
Workholding Solutions

Metalworking Clamps

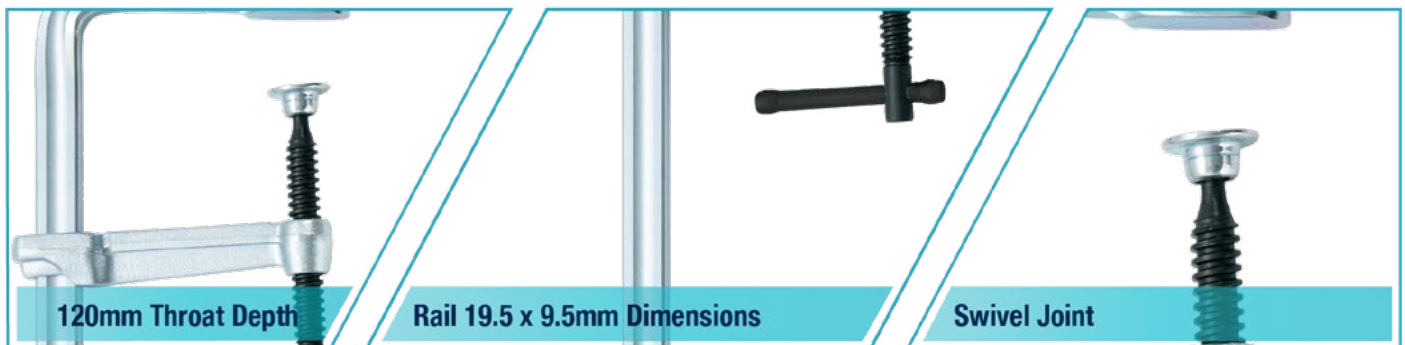
EC-DF General Purpose Metalworking Clamp

Heavy duty metal working clamps capable of up to 350Kgf clamping force.

- High quality drop forged C45 steel bar 19mm wide x 9.5mm thick ensures optimum strength
- Clamping plate features a swivel ball joint which may be tilted giving the ability to clamp awkward shaped work pieces
- End stop to prevent clamp from slipping
- Zinc plating for high corrosion resistance
- Acme threaded spindle
- 120mm throat depth



Part No.	Clamping Capacity	Pack Qty
EC-DF20	200mm	5
EC-DF25	250mm	5
EC-DF30	300mm	5
EC-DF45	450mm	5
EC-DF60	600mm	5



**1200KG
CLAMPING
FORCE**

Eclipse Heavy Duty Metalworking Clamp

The Eclipse range of Heavy Duty Metal working Clamps are ideal for heavy duty metal working and welding applications.

Available in five sizes capable of achieving up to 1200 kgf of clamping force.

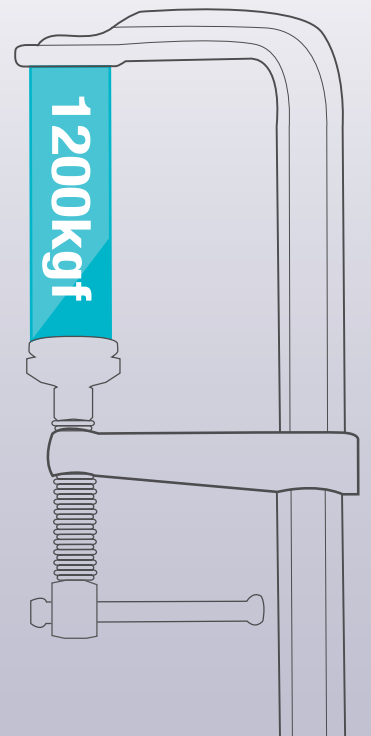
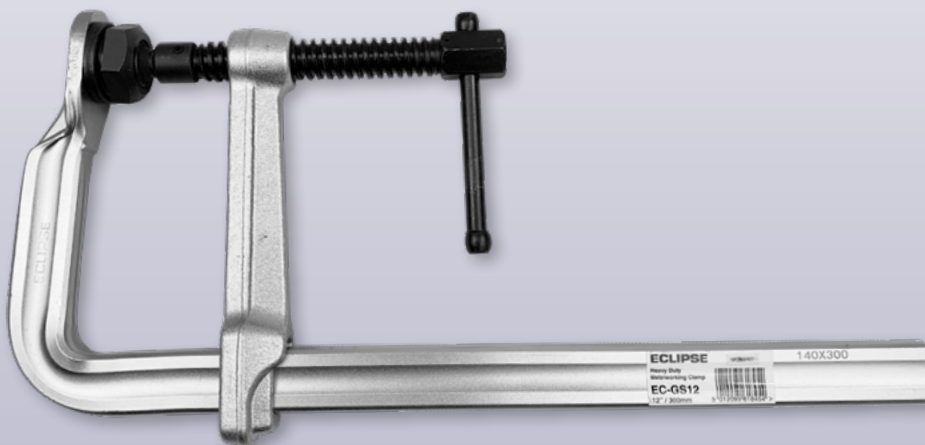
Workholding Solutions

Heavy Duty Metalworking Clamps

EC-GS Heavy Duty Metalworking Clamp

Heavy duty metal working clamps capable of up to 1200Kgf clamping force.

- High quality drop forged steel bar 30mm wide x 15mm thick ensures optimum strength. A hex design screw end reinforces clamping.
- Acme threaded spindle
- Heat treated replaceable circular clamping plates to withstand heavy duty working
- Zinc plating for high corrosion resistance
- Full ball swivel joint allows plate to be tilted 35° for clamping awkward shaped workpieces
- Safety end stop to prevent sliding of clamping
- Socket/Spanner drive handle



Part No.	Clamping Capacity	Pack Qty
EC-GS10	250mm	5
EC-GS12	300mm	5
EC-GS16	400mm	5
EC-GS20	500mm	5
EC-GS24	600mm	5
EC-GSCP	Spare Clamping Pad	



UP TO
1000KG
CLAMPING
FORCE

Eclipse T- Bar and Sash Clamps

The Eclipse range of Sash & T-Bar Clamps are perfect for a variety of large scale clamping jobs in metal and wood working.

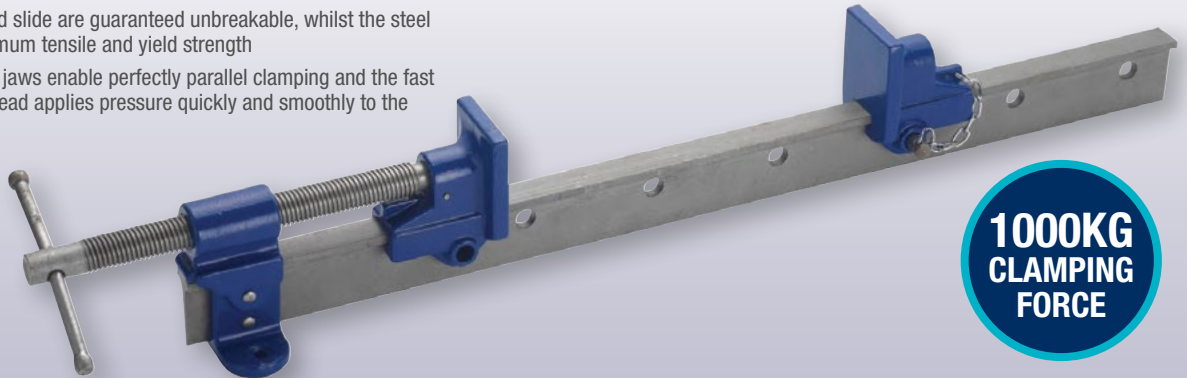
Workholding Solutions

T-Bar & Sash Clamps

EC-ETBR T-Bar Clamps

Average clamping force of 1000kg

- The drilled feet in the fixed head enable the clamp to be mounted to a workbench
- Ductile head and slide are guaranteed unbreakable, whilst the steel bar offers maximum tensile and yield strength
- Slightly tapered jaws enable perfectly parallel clamping and the fast action rolled thread applies pressure quickly and smoothly to the workpiece.

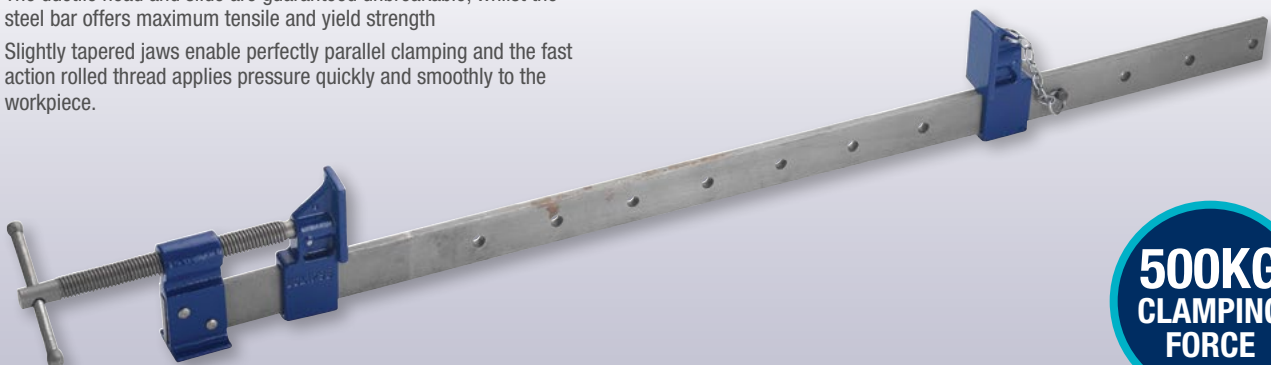


Part No.	Clamping Capacity	Bar Length	Pack Qty
EC-ETBR42	1070mm	1220mm	4
EC-ETBR48	1220mm	1370mm	4
EC-ETBR54	1370mm	1525mm	4
EC-ETBR66	1680mm	1830mm	4
EC-ETBR78	1980mm	2135mm	4

EC-ESC Sash Clamps

Sash clamps have an average clamping force of 500kg

- The ductile head and slide are guaranteed unbreakable, whilst the steel bar offers maximum tensile and yield strength
- Slightly tapered jaws enable perfectly parallel clamping and the fast action rolled thread applies pressure quickly and smoothly to the workpiece.



Part No.	Clamping Capacity	Bar Length	Pack Qty
EC-ESC24	600mm	760mm	6
EC-ESC30	760mm	915mm	6
EC-ESC36	915mm	1070mm	6
EC-ESC42	1070mm	1220mm	6
EC-ESC48	1220mm	1370mm	6
EC-ESC54	1370mm	1525mm	6
EC-ESC66	1680mm	1830mm	6

ECLIPSE

WORKHOLDING SOLUTIONS

Available from all good professional tools stockists



These products are guaranteed against defects in manufacturing, subject to wear and tear and the provision of reasonable care and maintenance.

This does not affect your statutory rights.

CUSTOMER SERVICE CENTRE

Spear & Jackson Australia PTY LTD
PO BOX 4400
Dandenong South, Victoria
Australia 3175

Tel: 1300 731 818

Fax: 1300 731 858

Email: sales@spearandjackson.com.au

Spear & Jackson New Zealand PTY LTD

18 Barrhead Place

Avondale, Auckland NZ

Tel: 09 828 5049

Fax: 09 828 8729

Email: sales@spear-and-jackson.co.nz

Follow us on:



FIND OUT MORE AT www.spearandjackson.com.au

Catagory
Sub Catagory