



2745C - Compact Threaded
Insert Setting Tool Kit

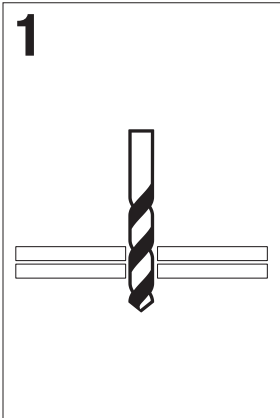
Operating Instructions



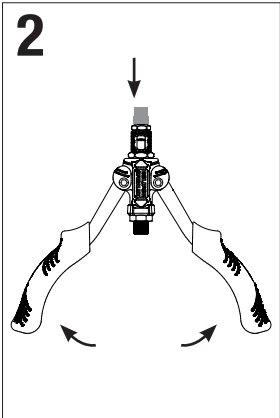
2745C - Compact Threaded Insert Setting Tool Kit

Operating Instructions

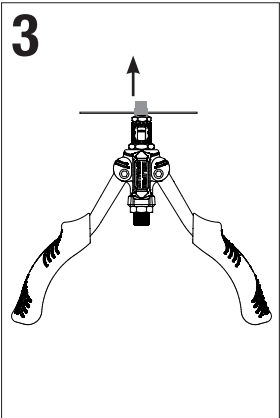
The Eclipse Compact Threaded Insert Setting Tool Kit has been designed to enable thin sheet nutserts to be placed quickly and easily by hand. It is invaluable to Plant and Maintenance Engineers, and also for DIY for simple assembly of threaded inserts or anchor nuts.



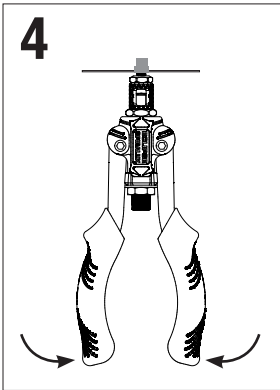
1
Pre-drill appropriate size hole in the material to be inserted



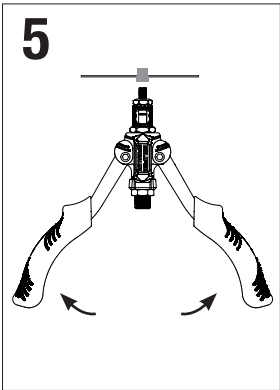
2
Open the handles and fit nutsert onto mandrel









3
Insert tool into pre-drilled hole



4
Close the handles to set nut in position

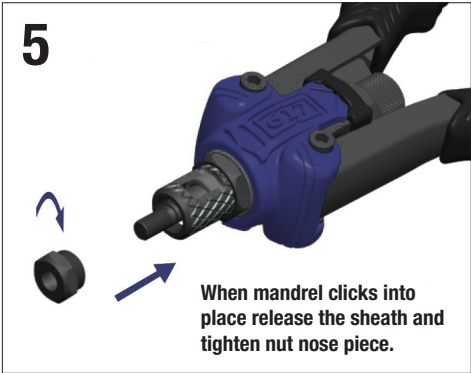
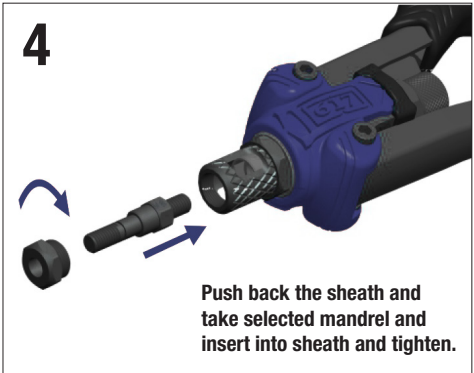


5
Open the handles and turn the knob clockwise to unload the insert tool from the inserted nut

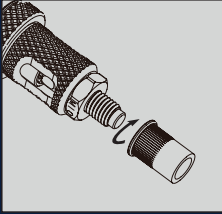
*Typical drill hole sizes		
Mandrel Sizes		Drill Sizes
	M3	5 mm
	M4	6 mm
	M5	7 mm
	M6	9 mm
	M8	11 mm
	M10	13 mm
*Check with nutsert supplier for appropriate hole size.		

Changing the Mandrel

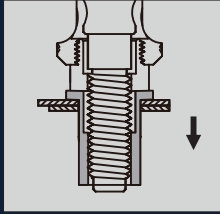
- The mandrel can be changed without removing the sleeve by pushing back the sheath and unscrewing from the housing for easy changing of mandrel size
- The multi-functional spanner can be used to remove the nut piece and the sleeve if necessary.



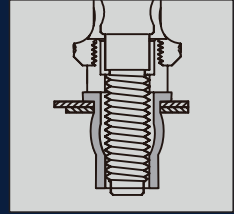
Effect on Nutsert



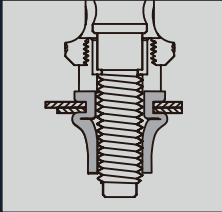
1. Screw nutsert onto mandrel



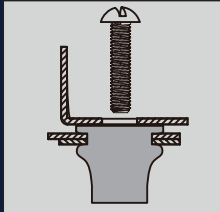
2. Place the nutsert in a pre-drilled hole



3. Nutsert starts to deform as handles are closed



4. Nutsert is set and has a tight grip on the hole sides and the rear of the work



5. The work can be fastened

This product is guaranteed against defects in manufacturing, subject to wear and tear and the provision of reasonable care and maintenance.

This does not affect your statutory rights.

CUSTOMER SERVICE CENTRE

Spear & Jackson Australia PTY LTD
PO BOX 4400
Dandenong South, Victoria
Australia 3175

Tel: 1300 731 818

Fax: 1300 731 858

Email: sales@spearandjackson.com.au

Spear & Jackson New Zealand PTY LTD

18 Barrhead Place

Avondale, Auckland NZ

Tel: 09 828 5049

Fax: 09 828 8729

Email: sales@spear-and-jackson.co.nz

Follow us on:



FIND OUT MORE AT www.spearandjackson.com.au

OVER 100 YEARS
OF EXPERTISE

