



Bolt Cutters & Snips



THE TOOLS TO TRUST



Bolt & Wire Cutting Range

Eclipse features a range of specialist cutters for the manual cutting of bolts, wire & cables.



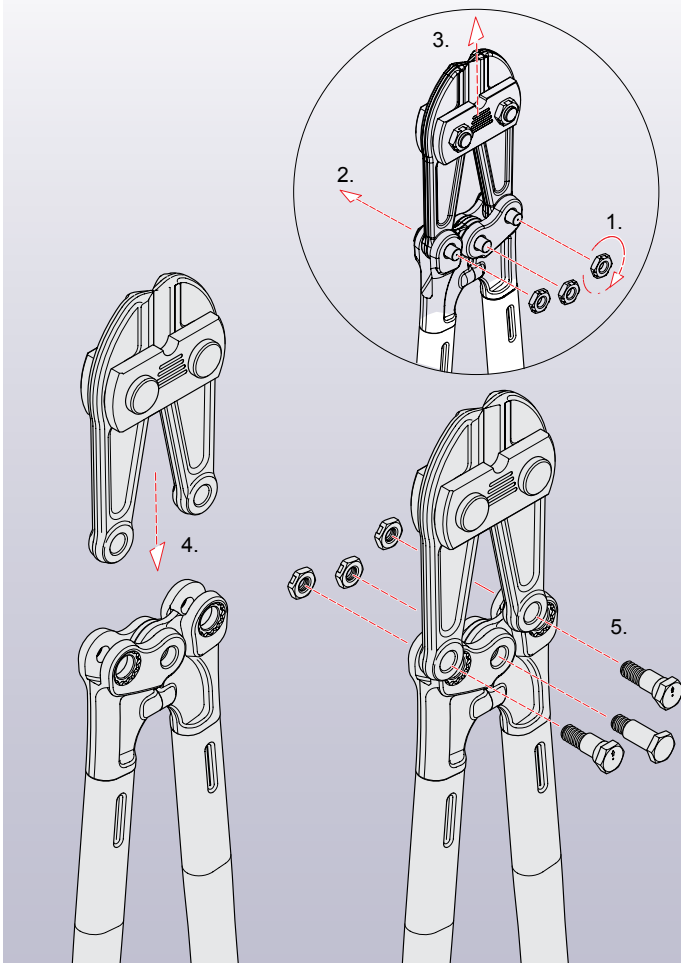
Cutting Bolt Cutters

Highly suitable for cutting high tensile steel rods, bolts, pre-stressed concrete, reinforcing rods, mesh and wire, cold drawn alloy steel, case hardened chain, tempered spring wire.

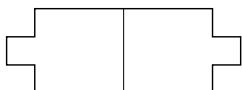
Changing the Cutter Head

Replacement heads available in both forged and tubular handle cutters.

1. Loosen the three nuts completely.
2. Remove the three screws.
3. Pull the old cutter head out of its holder.
4. Pull the handles apart.
5. Clean and lightly oil all joints.
6. Reattach the handles to the joint screw and tighten the nut slightly.
7. Push the new cutter head into the holder.
8. Fasten it with the two eccentric screws and nuts.
9. Secure the nuts with a gentle tap with a centre punch or with screw locking



Cut Styles



Centre Cut

Centre-cut bolt cutters are versatile and often used for a variety of tasks. The double bevel on each blade ensures that the whole weight of the blade is applied to the material being cut from all directions, making clean cuts on all sides. They work wonderfully for most jobs, such as sawing through thick wires and pipes.



End Cut

The blades of an end cut jaw are flattened and curved inward at the tip to form a pincer. When materials like bolt heads are located in tight, inaccessible spaces, these tools are utilised to secure a firm grasp before cutting them off with a clean, precise cut.

High tensile Bolt Cutters, available in a range of sizes, with a choice of tubular or solid forged handles.

Bolt Cutters - High Tensile, Tubular Handles

High tensile - for cutting hard materials up to 50HRC. Centre cut, arm adjusted bolt cutters with lightweight tubular handles that do not compromise strength.

- Every pound of force applied is amplified to produce 36kg of force between the jaws.
- To maximise safety the built in stops will yield rather than break
- Drop forged jaws are machined to precise specifications for a resilient body and rigid cutting edge



Part No.	Total Length	Max Cutting Capacity	Pack Qty
EC-ETBC14	355mm	5mm	20
EC-ETBC18	460mm	6.4mm	10
EC-ETBC24	610mm	7.9mm	8
EC-ETBC30	762mm	9.5mm	5
EC-ETBC36	915mm	11.1mm	4

Spare Jaw and Strap Set

Part No.	Description
EC-ETBC14RH2	Spare Jaw and Strap Set
EC-ETBC18RH2	Spare Jaw and Strap Set
EC-ETBC24RH2	Spare Jaw and Strap Set
EC-ETBC30RH2	Spare Jaw and Strap Set
EC-ETBC36RH2	Spare Jaw and Strap Set

Bolt Cutters - High Tensile, Forged Handles

High tensile - for cutting hard materials up to 50HRC. Centre cut, arm adjusted bolt cutters with solid forged handles for maximum strength.

- Every pound of force applied is amplified to produce 36kg of force between the jaws.
- To maximise safety the built in stops will yield rather than break
- Drop forged jaws are machined to precise specifications for a resilient body and rigid cutting edge.



Part No.	Total Length	Max Cutting Capacity	Pack Qty
EC-EFBC14	355mm	5mm	16
EC-EFBC18	460mm	6.4mm	8
EC-EFBC24	610mm	7.9mm	6
EC-EFBC30	762mm	9.5mm	4
EC-EFBC36	915mm	11.1mm	3
EC-EFBC42	1070mm	13mm	2

Spare Jaw and Strap Set

Part No.	Description
EC-EFBC14-RH	Spare Jaw and Strap Set
EC-EFBC18-RH	Spare Jaw and Strap Set
EC-EFBC24-RH	Spare Jaw and Strap Set
EC-EFBC30-RH	Spare Jaw and Strap Set
EC-EFBC36-RH	Spare Jaw and Strap Set
EC-EFBC42-RH	Spare Jaw and Strap Set

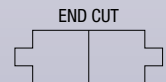
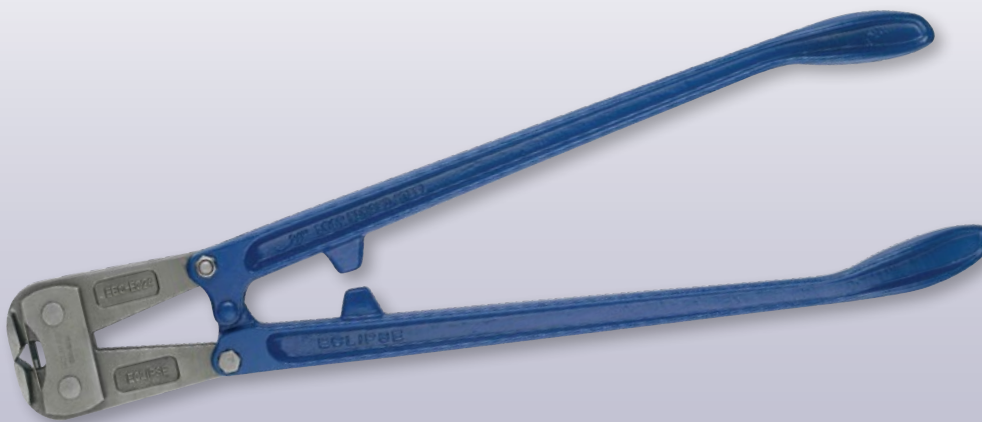
Cutting Bolt Cutters

Specialist cutters for shearing bolt heads and cutting wire, rope and cable.

EC-EBCEC24 End Cut Bolt Cutter - 600mm

Pincer movement makes the bolt cutter ideal for cutting in restricted areas or where a side cut is difficult eg. when cutting off bolt heads.

- Jaws are drop forged and machined to precise specifications for a resilient body and rigid cutting edge.
- Handles are solid forged and incorporate safety stops that will yield rather than break.



Part No.	Total Length	Max Cutting Capacity	Pack Qty
EC-EBCEC24	600mm	7.9mm	4

EC-EWC8 Wire & Rope Cutter - 200mm

Suitable for a multitude of agricultural, garden, automotive and marine cutting tasks.

- Angled and hardened blades ensure a clean cut
- Spring loaded head gives a fast, smooth cutting action.
- Rubber handles reduce the risk of slippage.

Material	Recommended Capacity
Mild steel strand	6.5mm
High tensile steel rope (180kg/mm ²)	5.0mm
Soft steel wire (34kg/mm ²)	5.0mm
Copper/aluminium rod	5.0mm
Steel rod (66kg/mm ²)	4.0mm
Spring wire (hardened and tempered) (180kg/mm ²)	2.5mm
Electric cable (not armoured)	6.5mm

Part No.	Total Length	Pack Qty
EC-EWC8	200mm	5



Aviation Snips Range

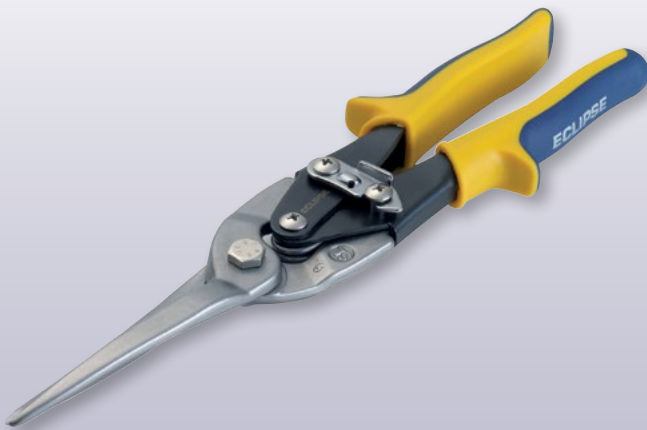
Aviation snips have 2 pivot points, meaning that they require less force to maintain a clean cut. Instead of long, clean cuts, aviation snips are chosen for more specialized tasks. Copper, silver and gold.

Cutting Aviation Snips

Cuts up to 1.2mm cold rolled steel and 0.7mm stainless steel. Drop forged alloy steel blades give a longer cutting life, whilst the spring loaded handles ensure a fast, smooth cutting action.

EC-EAS-SL Aviation Snips

Long cut/straight cut and wide curves Aviation Snips



Part No.	Cutting Capacity (Cold Rolled Steel)	Cutting Capacity (Stainless Steel)	Pack Qty
EC-EAS-SL	1.22mm	0.7mm	6

EC-EAS-S Aviation Snips

Straight and wide curves Aviation Snips



Part No.	Cutting Capacity (Cold Rolled Steel)	Cutting Capacity (Stainless Steel)	Pack Qty
EC-EAS-S	1.22mm	0.7mm	6

EC-EAS-R Aviation Snips

Right and straight cut Aviation Snips



Part No.	Cutting Capacity (Cold Rolled Steel)	Cutting Capacity (Stainless Steel)	Pack Qty
EC-EAS-R	1.22mm	0.7mm	6

EC-EAS-L Aviation Snips

Left and straight cut Aviation Snips



Part No.	Cutting Capacity (Cold Rolled Steel)	Cutting Capacity (Stainless Steel)	Pack Qty
EC-EAS-L	1.22mm	0.7mm	6

Snips Range

Resharpenable General Purpose Snips, precision hollow ground for easy cutting of sheet metal. Jewellers Snips suitable for cutting copper, silver and gold.



Cutting

General Purpose & Jewellers' Snips

Resharpenable General Purpose Snips, precision hollow ground for easy cutting of sheet metal.
Jewellers Snips suitable for cutting copper, silver and gold.

EC-ESGPS General Purpose Snips with Spring

For cutting sheet metal.

- Spring handle for ease of use during repetitive cutting.
- Precision hollow ground blades reduce friction for an easy cutting action.
- Induction hardened and tempered, they can be easily re-sharpened.
- The leather strap ensures safe storage.



Part No.	Total Length	Cutting Capacity (Mild Steel up to 18g)	Cutting Capacity (Stainless Steel up to 23g)	Pack Qty
EC-ESGPS8	200mm	0.8mm	0.46mm	6
EC-ESGPS10	250mm	1mm	0.46mm	6
EC-ESGPS12	300mm	1.2mm	0.46mm	6
EC-ESGPS14	355mm	1.4mm (up to 16g)	1.2mm (up to 18g)	6

EC-ESJ-7 Jewellers' Snips

For cutting copper, silver and gold.

- Precision hollow ground blades reduce friction for an easy cutting action.
- Easily resharpened because they are induction hardened and tempered.
- Integrated stops prevent trapped fingers without compromising the jaw capacity.



Part No.	Total Length	Cutting Capacity (Mild Steel up to 18g)	Cutting Capacity (Stainless Steel up to 23g)	Pack Qty
EC-ESJ7S	180mm Straight Blade	0.8mm	0.46mm	6
EC-ESJ7C	180mm Curved Blade	0.8mm	0.46mm	6

ECLIPSE

BOLT CUTTERS & SNIPS

Available from all good professional tools stockists



These products are guaranteed against defects in manufacturing, subject to wear and tear and the provision of reasonable care and maintenance.

This does not affect your statutory rights.

CUSTOMER SERVICE CENTRE

Spear & Jackson Australia PTY LTD
PO BOX 4400
Dandenong South, Victoria
Australia 3175

Tel: 1300 731 818

Email: sales@spearandjackson.com.au

Spear & Jackson New Zealand PTY LTD
18 Barrhead Place
Avondale, Auckland NZ

Tel: 09 828 5049

Email: sales@spear-and-jackson.co.nz

Follow us on:



FIND OUT MORE AT www.spearandjackson.com.au