

Hand Tools
THE TOOLS TO TRUST

Spear & Jackson
Since 1760



THE TOOLS TO TRUST

Spear & Jackson was founded in the City of Sheffield which is famous for the production of steel, cutlery and hand tools and continues to be our home over 250 years later.

In 1889, James Neill formed his own company adopting the Eclipse brand name. Initially manufacturing steel, he moved on to manufacture machine knives, woodworking tools and hacksaw blades, for which the company is best known.

The Spear & Jackson range was developed independently of Eclipse branded products until 1985 when James Neill acquired the Spear & Jackson group, subsequently renaming the company as Spear & Jackson.

The Spear & Jackson brand is probably best known for our unparalleled range of quality garden digging and cultivating tools and cutting tools, all of which are designed to appeal to all levels of garden expertise and budget.

While Eclipse is recognised worldwide as the professionals' choice for metal cutting and machinery workshop hand tools.

As you would expect with over 250 years of experience, the Spear & Jackson ground work product offering has widened to accommodate natural product extensions such as contractors shovels and rakes, agricultural

tools and landscaping products.

Spear & Jackson hand tools developed alongside our ground work ranges and include tools for DIY and professional use, with our market leading "Predator" branded wood saws being the first range to be application lead, giving users the most appropriate saw for the task.

The Eclipse product range also has widened to accommodate natural product extensions, such as holesaws, jigsaw blades, reciprocating blades, locking jaw pliers, bolt and cable cutters, aviation snips, riveters, vices, heavy duty woodworking and metalworking clamps, engineers hand tools, plumbing tools, adjustable wrenches, hose clips and torque control tools. All designed and manufactured to the highest possible quality standards.

We also sell a wide range of builder's tools and accessories with prices and qualities to suit all levels of expertise including the well known Tyzack brand of professional brick laying and plasterer's tools.

Spear & Jackson Australia is a division of the Spear & Jackson Group, which also includes within it's other divisions the following brands:

- Moore & Wright
- Eclipse Magnetics
- Bowers
- Baty
- Robert Sorby

Spear and Jackson Australia was established in May 1957 and continues to provide customers with a great range of products.

Spear & Jackson head office is based in the UK with other sites in North America, France, China.

Throughout development of the Spear & Jackson brand, the company has always continued to innovate both in terms of new ideas and applications, using new technologies and combining new and traditional materials to create reliable, superb quality, highly functional tools at affordable prices, creating our enviable reputation as a supplier of **the tools to trust**.

Spear & Jackson
Since 1760

Spear & Jackson

Brand Heritage





SPEAR & JACKSON



DO NOT OVER TIGHTEN. CAN CAUSE
OUTER RINGS TO CRACK. ALWAYS
RECOMMENDED TO STOP
INSPECT THE TOOL
IF IN ANY DOUBT. SOAK THE
HEAD IN WATER BEFORE USE.



Contents

Find what you're looking for

Brand Heritage	2
-----------------------	----------

HAND TOOLS

Woodworking	6
Predator Saws	7
Traditional Wood Saws	11
Carpenters' Planes	15
Eclipse Wood Chisels	17

Striking	18
Claw Hammers	19
Pein Hammers	20
Club & Brick Hammers	21
Sledges Hammers	22
Mallets	23

Knives & Punches	24
-----------------------------	-----------

Measure & Mark	28
Bevels & Squares	30
Carpenters' Range	32
Levels	34
Pencils	36
Chalk Line	37

Masonry Tools	38
Brickworking	40
Plastering	48
Concreting	58



PREDATOR™

Our range of Predator™ hard point saws have been specially developed to meet the needs of even the most demanding professional.

Spear & Jackson began making saws 250 years ago. The wealth of experience gained over this period of time is just one of the many reasons why **Spear & Jackson** has such a unique reputation.

The **Predator™** range includes saws for four specialist purposes, giving users the most appropriate saw for the task - First Fix, Second Fix, Laminate, and UPVC cutting.

The range also includes our best-selling multi-purpose Universal saw, our Triplefast saw and our Predator X fleam tooth saw. All saws are heat-treated using the very latest technology to ensure outstanding durability and performance.

Woodworking

Predator Saws

Our range of Predator™ hard point saws have been specially developed to meet the needs of even the most demanding professional

SJ-B98FF Predator First Fix Saw

A coarser cutting saw for use along and across the grain

- Fast cut - rapid, clean cutting action
- Rigid blade minimises whip and vibration
- Use with all rough sawn timber
- Comfortable handle Suregrip® soft feel ergonomic grip and finger guide for improved accuracy, also incorporating a useful 45/90° angle guide



SJ-B98FF 550mm x 7pts, Rough Finish, 10 Pack

SJ-B982SF Predator Second Fix Saw

A fine cutting saw for use along and across the grain, ideal for planed wood, architraves, skirting, and dado rails

- Fast cut, rapid, clean cutting action
- Rigid blade minimises whip and vibration
- Comfortable handle Suregrip® soft feel ergonomic grip and finger guide for improved accuracy, also incorporating useful 45/90° angle guide



SJ-B982SF 500mm x 10pts, Medium Finish, 10 Pack

SJ-B98TRIPLE Predator Triplefast Saw

A fine cutting saw for cutting along and across the grain, ideal for a smooth finish on soft woods

- Triple ground tooth configuration
- Rigid blade minimises whip and vibration
- Comfortable handle Suregrip® soft feel ergonomic grip and finger guide for improved accuracy, also incorporating a useful 45/90° angle guide



SJ-B98TRIPLE 550mm x 10pts, Medium Finish, 10 Pack

SJ-B98LAMINATE Predator Laminate Saw

A hard point saw delivering a fine cut, ideal for use on laminate flooring, Formica and beading

- Fast cut, rapid, clean cutting action
- Rigid blade minimises whip and vibration
- Comfortable handle Suregrip® soft feel ergonomic grip and finger guide for improved accuracy, also incorporating a useful 45/90° angle guide



SJ-B98LAMINATE 500mm x 14pts, Extra Fine, 10 Pack



The soft feel Suregrip® handle and finger guide have been designed to improve cutting accuracy

SJ-B98UPVC Predator UPVC Saw

A hard point saw for cutting UPVC and hard plastics, ideal for cutting sills, trims and plastic pipes

- Fast clean cutting action
- Rigid blade minimises whip and vibration
- Comfortable handle Suregrip® soft feel ergonomic grip and finger guide for improved accuracy, also incorporating a useful 45/90° angle guide



SJ-B98UPVC 500mm x 14pts, Fine Finish, 10 Pack

SJ-B98X Predator X Saw

Fleam teeth for fastest cut along and across the grain on forward and reverse stroke, ideal for timber, hardwood, chipboard and MDF

- Rigid blade minimises whip and vibration
- Comfortable handle Suregrip® soft feel ergonomic grip and finger guide for improved accuracy, also incorporating a useful 45/90° angle guide



SJ-B98X 550mm x 8pts, Medium Finish, 10 Pack

SJ-B9822 Predator Universal Saw

General purpose saw for use along and across the grain, ideal for timber, hardwood, chipboard and MDF

- Fast cut - rapid clean cutting action
- Rigid blade minimises whip and vibration
- Comfortable handle Suregrip® soft feel ergonomic grip and finger guide for improved accuracy, also incorporating a useful 45/90° guide



SJ-B9822 550mm x 8pts, Medium Finish, 10 Pack



Woodworking

Predator Saws

Professional wood saws, designed for various applications, ensuring there is always the right tool for the job!

SJ-B98QC Predator Quick Cut Saw

Specifically designed for general cutting along and across the grain

- Cross ground teeth cut in both directions
- ABS handle with built in finger guide
- Rigid 0.91mm blade minimises whip and vibration
- Heat treated teeth maximises blade life
- Handle includes 90° & 45° angle guide



SJ-B98QC 500mm x 8pts, Medium Finish, 24 Pack

SJ-B9812 Predator Tenon Saw

Ideal for cutting out a tenon and cutting pelmets, moulding, dowelling, coving, architraves and skirting

- A fine cut with a smooth, clean cutting action
- Solid steel back for maximum rigidity
- Comfortable handle - Suregrip® soft feel ergonomic grip and finger guide for accuracy, also incorporating a useful 45/90° angle guide



SJ-B9812 300mm x 15pts, Fine Finish, 10 Pack

SJ-B9814 Predator Toolbox Saw

Ideal for cutting pelmets, mouldings, dowelling, coving, architraves and skirting

- A fine cut with smooth cutting via push/pull action
- Rigid blade minimises whip and vibration
- Comfortable handle - Suregrip® soft feel ergonomic grip and finger guide for accuracy, also incorporating a useful 45/90° angle guide



SJ-B9814 350mm x 14pts, Fine Finish, 10 Pack



Traditional Wood Saws

A range of traditional brass back & skew back saws with high quality wooden handles.



 **SPEAR & JACKSON**
TRADITIONAL SKEW BACK
www.spear-and-jackson.com

Woodworking

Traditional Wood Saws

Our range of traditional Brass & Skew Back saws with traditional wooden handles

SJ-9540B, SJ-9550B Traditional Brass Back Tenon Saw

For joint cutting and sawing small pieces of wood and wood based materials

- Universal teeth for general use, cuts along and across the grain
- Brass back for maximum rigidity
- Comfortable, strong wooden handle securely fixed by rivets
- High carbon steel blade
- Precision ground teeth



SJ-9540B 250mm x 15pts, Fine Finish, 5 Pack

SJ-9550B 300mm x 15pts, Fine Finish, 5 Pack

SJ-9500R, SJ-9525X Traditional Skew Back Saw

Cuts timber chipboard, plywood and other wood based materials

- Universal teeth for general use, cuts along and across the grain
- Precision cross ground teeth
- Teeth can be resharpened
- Skew back for balance and reduced friction
- Comfortable wooden handle securely fixed by rivet
- High carbon steel blade



SJ-9500R 550mm x 10pts, Medium Finish, 10 Pack

SJ-9525X 650mm x 7pts, Rough Finish, 10 Pack



Eclipse Specialist Saws

A range of specialist saw blades & frames for cutting and shaping various materials such as wood, bone, plastics and jewellery.



Woodworking

Specialist Saw Frames & Blades

A range of specialist saw frames for cutting and shaping various materials such as wood, bone, plastics and jewellery.

SJ-7CP Coping Saw

- Coping saw for cutting and shaping in wood.
- Comfortable wooden handle and steel frame.
- Blades can be positioned at any angle to the frame. Supplied with Eclipse 14tpi Coping Saw blade.



Part No.	Length	Height	Pack Qty
SJ-7CP	315mm	130mm	5

EC-70-CP1RSF Coping Saw

- Coping saw for cutting and shaping in wood
- Soft-feel handle for extra comfort and steel frame.
- Blades can be positioned at any angle to the frame.
- Supplied with Eclipse 14tpi Coping Saw blade.



Part No.	Length	Height	Pack Qty
EC-70-CP1RSF	317mm	317mm	5

SJ-71/114R Junior Blade - Wood



Part No.	Length	Teeth per 25mm	Blades in Pack
SJ-71/114R	150mm	14	10

SJ-71/CP7R Coping Saw Blades



Part No.	Length	Teeth per 25mm	Blades in Pack
SJ-71/CP7R	165mm	14	10



Carpenters' Range

A carefully selected range of popular carpenters' smoothing planes. Classically designed with rosewood-stained hardwood handles and brass fittings, these tools hark back to the days of traditional craftsmanship and woodwork.

SJ-CSP3 No.3 Smoothing Plane

- Ductile cast iron painted gloss black with ground sides and bottom
- Blade retaining block: Ductile cast iron painted gloss black
- Block Length and Width: $110 \times 44 \pm 0.5\text{mm}$ screwed to base
- Base Length: $234 \pm 2\text{mm}$
- Base Width: $55 \times 38 \pm 1\text{mm}$
- 45mm(w) high carbon steel blade



SJ-CSP3BLADE Replacement blade

SJ-CSP4 No.4 Smoothing Plane

- Ductile cast iron painted gloss black with ground sides and bottom
- Base Length: $248 \pm 2\text{mm}$
- Base Width: $63 \times 42 \pm 1\text{mm}$
- Blade retaining block: Ductile cast iron painted gloss black
- 50mm(w) high carbon steel blade



SJ-CSP4BLADE Replacement blade

Woodworking Carpenters' Planes

SJ-CT4PS 4 Piece Tool Set

- Durable hardwood handles
Brass fittings
Spring steel blades
- **Set Contains:**
230mm Sliding Bevel, 230mm Carpenter's Set Square,
200mm Mortice Gauge, No.4 Smoothing Plane



SJ-CJP5 No.5 Jack Plane

- Ductile cast iron painted gloss black with ground sides and bottom
- Base Length: 355.0 \pm 2mm
- Base Width: 63 x 47 \pm 1mm
- Blade retaining block:
Ductile cast iron painted gloss black
- 50mm(w) high carbon steel blade



SJ-CJP5BLADE Replacement Blade

SJ-CBP65 No.6 1/2" Block Plane

- Ductile cast iron painted gloss black with ground sides and bottom
- Base Length: 157.0 \pm 2mm
- Base Width and Depth: 44 x 28 \pm 1mm
- Blade retaining block:
Ductile cast iron painted gloss black
- 35mm wide low angle cutter and fully adjustable mouth



SJ-CBP65BLADE Replacement Blade

SJ-CBP95 No.9 1/2" Block Plane

- Ductile cast iron painted gloss black with ground sides and bottom
- Base Length: 157.0 \pm 2mm
- Base Width and Depth: 44 x 28 \pm 1mm
- Blade retaining block:
Ductile cast iron painted gloss black
- 42mm wide low angle cutter and fully adjustable mouth



SJ-CBP95BLADE Replacement Blade



The image shows three Eclipse wood chisels on a wooden workbench. One chisel is positioned diagonally across the frame, its blade resting on a piece of wood. The blade is marked with 'ECLIPSE' and '1 1/2" (38mm)'. Another chisel is positioned vertically in the foreground, its blade marked with 'ECLIPSE' and '1" (25mm)'. A third chisel is partially visible on the right side of the frame. The workbench is covered with wood shavings, suggesting active use.

ECLIPSE 1 1/2" (38mm)

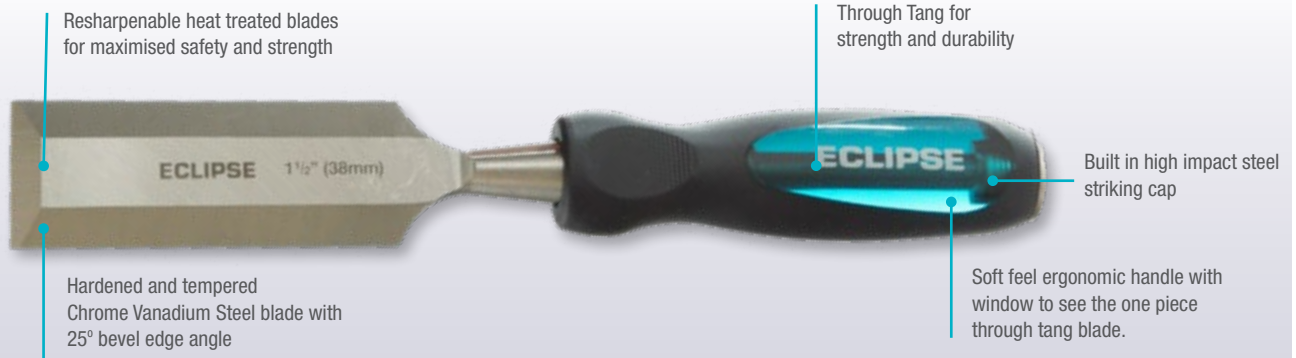
Eclipse Wood Chisels

The blades of the ECLIPSE range of wood chisels are made from one piece of chrome vanadium steel for maximum strength. The heat treated blades, which are sharpened and ready for use, can be re-sharpened up to a depth of 25mm for a longer working life.

Woodworking

Eclipse Wood Chisels

High Impact Through Tang Wood Chisels



Part No.	Blade Width	Pack Qty.
EC-TT-BEWC1/4E	6mm Bevel Edge	5
EC-TT-BEWC3/8E	9mm Bevel Edge	5
EC-TT-BEWC1/2E	12mm Bevel Edge	5
EC-TT-BEWC5/8E	15mm Bevel Edge	5
EC-TT-BEWC3/4E	19mm Bevel Edge	5
EC-TT-BEWC1E	25mm Bevel Edge	5
EC-TT-BEWC11/4E	32mm Bevel Edge	5
EC-TT-BEWC11/2E	38mm Bevel Edge	5
EC-TT-BEWC2E	50mm Bevel Edge	5
EC-TT-BEWC6BCE	6pc Set (6,9,12, 19, 25, 32mm)	5



Wood Chisels

- Soft feel ergonomic handle
- Resharpenable Heat treated blades for maximised safety and strength
- Chrome vanadium steel
- Built in striking cap

Part No.	Blade Width	Pack Qty.
EC-BEWC1/4E	6mm Bevel Edge	5
EC-BEWC3/8E	9mm Bevel Edge	5
EC-BEWC1/2E	12mm Bevel Edge	5
EC-BEWC5/8E	15mm Bevel Edge	5
EC-BEWC3/4E	19mm Bevel Edge	5
EC-BEWC1E	25mm Bevel Edge	5
EC-BEWC11/4E	32mm Bevel Edge	5
EC-BEWC11/2E	38mm Bevel Edge	5
EC-BEWC2E	50mm Bevel Edge	5
EC-BEWC6BCE	6pc Set (6,9,12, 19, 25, 32mm)	5





Striking Range

A toolbox essential for professionals and DIYers alike, all Spear & Jackson hammers are made from first-class materials and manufactured to the highest product specifications. Forged heads are expertly heat-treated, finished and fixed to hickory, steel or fibreglass shafted handles, ensuring maximum strength, reliability and safety.



Striking Claw Hammers

SJ-CH24W Claw Hammer Hickory Handle

Used by carpenters for fixing and removing nails. Should never be used for striking implements such as cold chisels

- Heat treated fully polished head
- Premium Hickory Handle
- Dual cylindrical wedges for added safety



SJ-CH24W 680g, Hickory, 6 Pack

SJ-CHFG Claw Hammer Fibreglass Handle

Used by carpenters for fixing and removing nails. Should never be used for striking implements such as cold chisels

- Heat treated fully polished head
- Tough Fibreglass Handle
- Dual material soft grip handle



SJ-CH20FG 570g

SJ-CH24FG 680g



Striking Pein Hammers

SJ-CHFA Claw Hammer AntiVibe

Used by carpenters for fixing and removing nails. Should never be used for striking implements such as cold chisels

- Heat treated fully polished head
- Anti vibration beam design, forged one piece head & shaft
- Dual material soft grip mechanically pinned to shaft.
- Magnetic nail start & oversized strike area.



SJ-CH20FA 570g, Anti Vibration



SJ-BPH Ball Pein Hammers

Made for use in striking and shaping metal materials. It is also used for hitting chisels and punches

- Heat treated fully polished head
- Premium Hickory handle
- Dual wedges for added safety



SJ-BPH8	226g
SJ-BPH12	340g
SJ-BPH16	450g
SJ-BPH24	680g
SJ-BPH32	900g

SJ-CPH Cross Pein Hammers

Most useful in cabinet work, light joinery, and other woodworking tasks

- Premium hickory handle
- Heat treated fully polished head
- Dual wedges for added safety



SJ-CPH10 280g

SJ-CPH12 340g

SJ-CPH14 396g

Striking Club & Brick Hammers

All our Hammers are manufactured to the highest product specifications ensuring maximum strength...

SJ-FGCH Club Hammer Fibreglass Handle

Used in the building and construction industry for delivering short heavy blows, e.g. with cold chisels and brick bolsters

- Heat treated head
- Fibreglass Handle
- Dual material soft grip



SJ-FGCH3 1.3kg

SJ-FGCH4 1.3kg

SJ-CHAS Club Hammer All Steel Handle

Used in the building and construction industry for delivering short heavy blows, e.g. with cold chisels and brick bolsters

- All feature heat treated head
- All Steel forged one piece head & handle
- Dual material soft grip



SJ-CH25AS 1.1kg

SJ-CH4AS 1.8kg

SJ-CHW Club Hammer Hickory Handle

Used in the building and construction industry for delivering short heavy blows, e.g. with cold chisels and brick bolsters

- Heat treated head
- Hickory handle
- Cylindrical wedges for added safety



SJ-CH3W 1.3kg

SJ-CH4W 1.8kg

SJ-BRH24 Brick Hammer

Used by bricklayers for cutting and fitting bricks and stonework

- Fully polished head
- With a choice of:
Fibreglass Handle - dual material soft grip
All Steel - a forged one piece head & handle with dual material soft grip



SJ-BRH24FG 680g, Fibreglass

SJ-BRH24AS 680g, All Steel



SJ-SHFP Sledge Hammers

Used in all industries for heavy work such as demolition or where a heavy blow is required, e.g.. driving home stakes

- Hardened, tempered drop forged head
- Over strike guard
- Tough Fibreglass handle
- Mechanically pinned & chemically fixed head
- Dual material soft grip



SJ-SHFP4	1.8kg
SJ-SHFP7	3.2kg
SJ-SHFP10	4.5kg
SJ-SHFP14	6.4kg

SJ-LBWH Hickory Sledge Hammers

Used in all industries for heavy work such as demolition or where a heavy blow is required, e.g.. driving home stakes

- Hardened, tempered drop forged head
- Over strike guard
- Premium Hickory handle
- Cylindrical wedges for added safety



SJ-4LBWH	1.8kg
SJ-7LBWH	3.2kg
SJ-10LBWH	4.5kg
SJ-14LBWH	6.4kg

Striking Sledges & Mallets

Our Rubber Mallets are made from highly durable materials providing years of service...

SJ-CM400 Carpenters Mallet

Ideal for use with wood chisels and shaping tools

- Made entirely from premium beechwood
- Sculptured all wood handle will hang hole



EG-12100 Rubber Mallets Hardwood Handle

Ideal for construction, automotive and general use

- Durable rubber head in black
- Lacquered hardwood handle



EG-12100/16 450g

EG-12100/24 680g

EG-12100/32 900g

SJ-RMFG Rubber Mallet Fibreglass Handle

Ideal for construction, automotive and general use

- Durable rubber head in black
- Fibreglass Handle - dual material soft grip



SJ-RM16FG 450g

SJ-RM24FG 680g

SJ-RM32FG 900g

SJ-WRMFG White Rubber Mallet Fibreglass Handle

Ideal for construction, automotive and general use

- Durable rubber head in white for non marking applications
- Fibreglass Handle - dual material soft grip



SJ-WRM16FG 450g

SJ-WRM24FG 680g

SJ-WRM32FG 900g



Knives & Eyelet Tools

The small tools are just as important as the large ones. Utility and craft knives allow for precise finer-detail cutting. While leather punches and eyeletting tools are perfect for finishing off projects.

Knives & Punches

Utility Knives

Utility knives and blades, part of any tradesman's essential tool kit...

EG-031BFC

Standard Utility Knife - 12 Pack

- Standard retractable utility knife
- All metal body
- Includes 1x blade
- Accepts standard 60mm x 18mm blades



SJ-1750

Folding Knife with 10 Blades

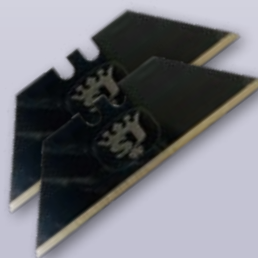
- Durable all metal body folding knife
- Quick blade mechanism
- Stable back lock
- Comfortable soft feel handle
- Includes a pack of 10 spare blades



SJ-1750BP10

Blade Pack

- Will suit most standard utility knives
- 10 blades





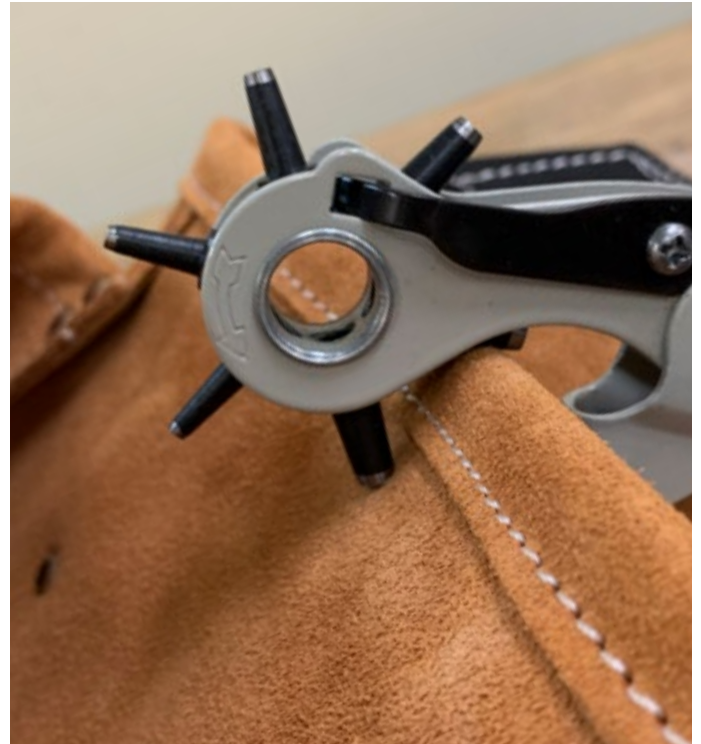
Knives & Punches

Punches & Knives

Leather punch & speciality knives, perfect for DIY & craft projects...

EG-1509 Leather Punch

- For leather and other soft materials
- Hole sizes: 2.0mm, 2.5mm, 3.0mm, 3.5mm, 4.0mm, 4.5mm
- Revolving 6 way PVC hand grips



SJ-HK115 Hacking Knife

Used for the removal of old putty from window frames

- Heavy duty tapered blade
- Honed to a very sharp edge
- Rosewood timber handle
- 120mm blade length



SJ-SK120 Shoe Knife

Ideal for trimming and cutting leather, rubber & plastics

- Rosewood timber handle
- 120mm blade length



SJ-LK75CP Lino Knife

Ideal for cutting and shaping lino and other similar materials

- Chrome plated blade
- Rosewood timber handle
- 75mm blade length



Knives & Punches

Pliers & Eyelets

Eyelet pliers, perfect for DIY & craft projects...

EG-1011PI Eyelet Pliers

- Heavy duty construction
- Polished chrome body
- Comfortable vinyl grips
- Supplied with 20x 7mm eyelets



EG-1013 Eyelet Pliers

- Heavy duty construction
- Polished chrome body
- Comfortable vinyl grips
- Supplied with 20x 12mm aluminium eyelets



EG-1007 Grommet Punch

- Supplied with 8 grommets
- Hammer required for use



EG-1011/200 Eyelets 7mm - 200 Piece

- 7mm
- For use with EG-1011PI
- 200 Pieces



EG-1013C Eyelets 12mm - 20 Piece

- 12mm
- For use with EG-1013
- 20 Pieces



EG-1007/S Grommets 10mm

- 10mm
- For use with EG-1007
- 25 Pieces





Mark, Measure

The small tools are just as important as the large ones. Every successful project will need to be measured and marked out. Spear & Jackson metric and imperial tape measures and squares, combined with spirit levels and chalk lines, are perfect for project preparation.

Measure & Mark

Rulers & Sliding Bevels

High quality essential measuring tools for the builder or renovator...

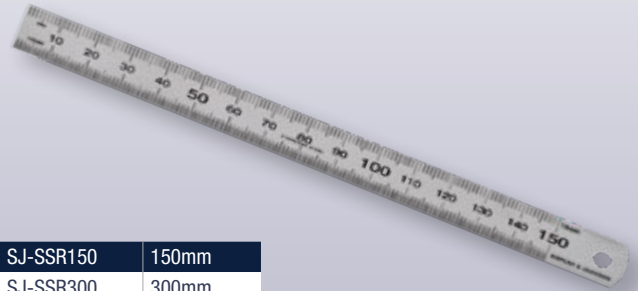
SJ-FRMI 1000mm Folding Ruler

- 4 fold rule
- Tough combination of fibreglass & PVC
- Easy read etched numerals
- Metric & imperial graduations
- Bevelled edge



SJ-SSR Stainless Steel Rulers

- Premium stainless steel blades
- Hanging hole
- Easy read acid etched numerals
- Metric only graduation



SJ-SSR150	150mm
SJ-SSR300	300mm
SJ-SSR600	600mm
SJ-SSR1000	1000mm

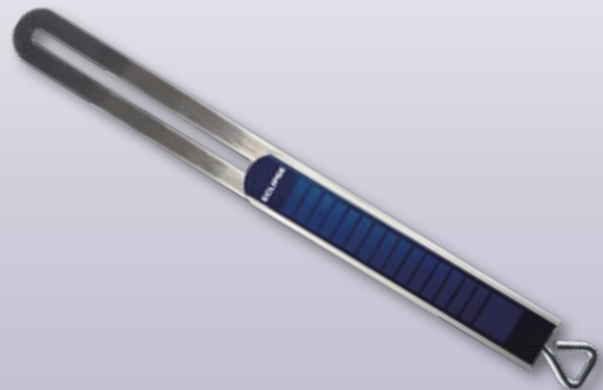
SJ-STB200 Sliding Bevel - 200mm

- Used for the setting and duplicating of angles in carpentry
- 1.5mm stainless steel blade
- Tough ABS body



EC-ESB250 Sliding Bevel - 250mm

- Great for making furniture, putting up shelves or fixing skirting boards and architraves
- Carbon steel blade
- Aluminium base
- End screw for secure locking of the bevel in the required position

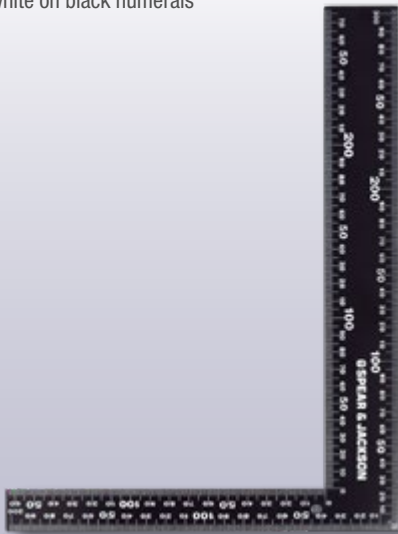




Comprehensive bevels & squares for every job...

EG-120 Carpenters Square

- Used for measuring and laying out angles
- Easy to read white on black numerals
- 1mm scale

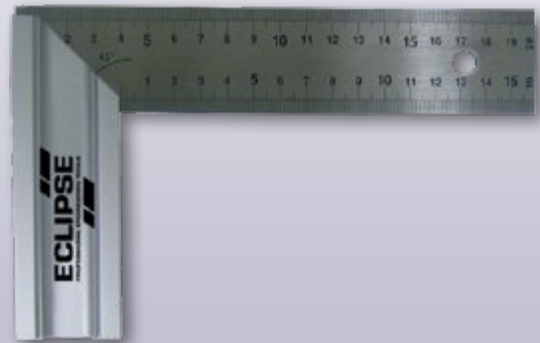


EG-120 300x200mm, 4 Pack

EG-6040 600x400mm, 4 Pack

SJ-TMS Square Try & Mitre

- Premium 1.5mm stainless steel blade
- Accurate acid etched numerals
- Strong but lightweight aluminium stock
- Suitable for carpentry applications
- Ideal for 90° & 45° degree settings



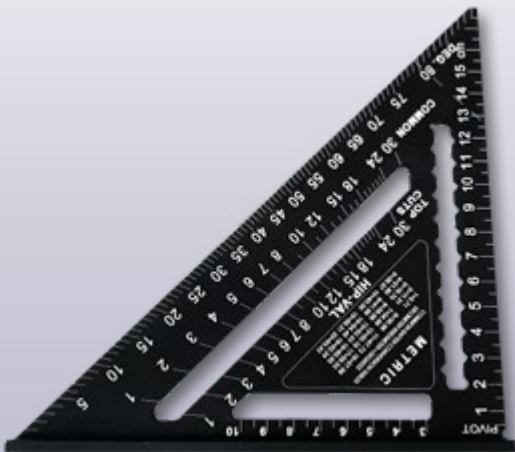
SJ-TMS200 200mm

SJ-TMS250 250mm

SJ-TMS300 300mm

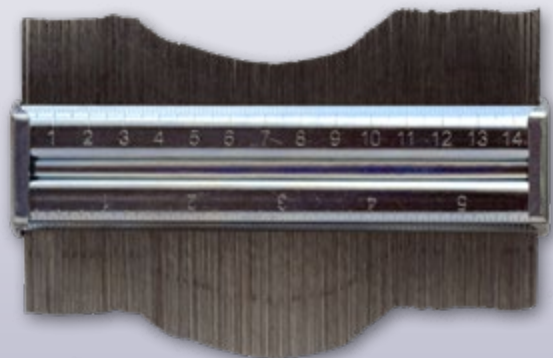
SJ-RSM Rafter/Speed Square

- Sturdy aluminium construction
- Stamped conversion tables
- Thick frame design ensures safe use with a saw or knife
- Angles from 0 to 90 degrees can be marked quickly and easily



EG-200CG Contour Gauge

- Used to duplicate shapes and forms
- All metal construction
- Connecting plate for joining additional gauges
- 150mm

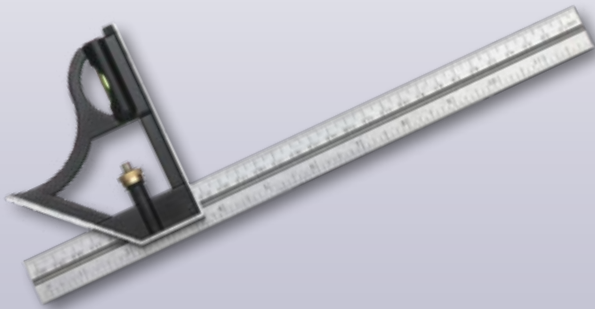


Measure & Mark

Bevels & Squares

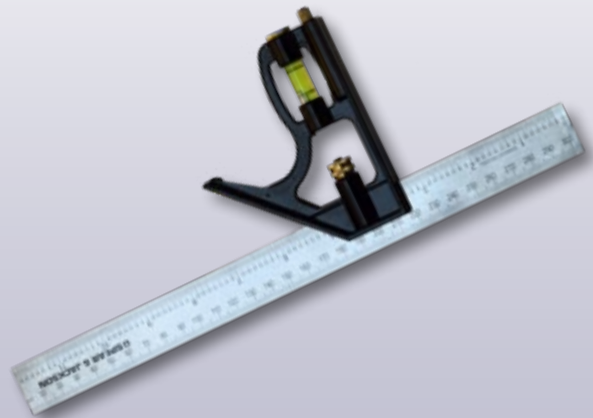
EC-50-470R Combination Square 300mm

- Hardened stainless steel rule
- Alloy head
- Metric & imperial graduations
- Level & scriber



SJ-SQC300 S&J Combination Square

- Hardened stainless steel rule
- Metric & imperial graduations
- Includes level & scriber



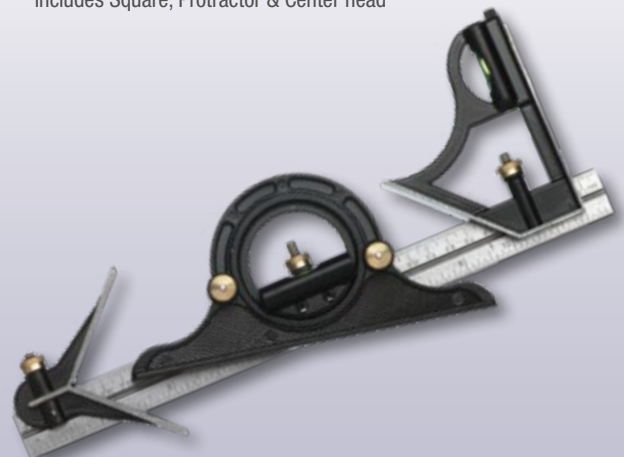
EC-CS300 Pro Combination Square 300mm

- Cast iron square stock,
- Hardened & precision ground measurement faces and slide ways for greater accuracy
- Stainless steel rule 12"/300mm
- Metric & imperial graduations
- Includes level & scriber



EC-50-460R Combination Set

- Stainless steel rule
- Graduated in metric and imperial
- Spirit level, scriber and knurled brass lock nut
- Includes Square, Protractor & Center head





Carpenters' Range

A carefully selected range of popular carpenters' tools, including sliding bevels, try squares and mortice gauges. Classically designed with rosewood-stained hardwood handles and brass fittings, these tools hark back to the days of traditional craftsmanship and woodwork.

Measure & Marking

Carpenters' Range

SJ-CSB Sliding Bevel

- Rosewood stained hardwood with brass top and bottom faces
- Base Depth and Width: 26.5 ± 1mm x 18.0 ± 0.5mm
- Brass Edge Thickness: 3mm
- Spring Steel Blade



SJ-CSB75 190mm Base Length: 136 ± 1mm
 SJ-CSB9 225mm Base Length: 162 ± 1mm
 SJ-CSB12 300mm Base Length: 203 ± 1mm

SJ-CTS Try Square

- Rosewood stained hardwood with brass top and bottom faces
- Base Depth and Width: 48 x 18.0 ± 0.5mm
- Brass Edge Thickness: 3mm
- Spring Steel Blade



SJ-CTS6 150mm Base Length: 120 ± 1mm
 SJ-CTS9 225mm Base Length: 165 ± 1mm
 SJ-CTS105 265mm Base Length: 179 ± 1mm

SJ-CMKG 200mm Marking Gauge

- Block - Rosewood stained hardwood with 2 brass plates on the working face, round brass bar through top section and brass lock
- Screw on top
- Block size: 66 x 55 x 28 ± 1mm
- Brass Plates in Block: 7 x 3mm
- Brass Bar in Block: 12mm diameter



SJ-CMTG 200mm Mortice Gauge

- Block - Rosewood stained hardwood with 2 brass plates on the working face, round brass bar through top section and brass lock
- Screw on top
- Block size: 66 x 55 x 28 ± 1mm
- Brass Plates in Block: 7 x 3mm
- Brass Bar in Block: 12mm diameter



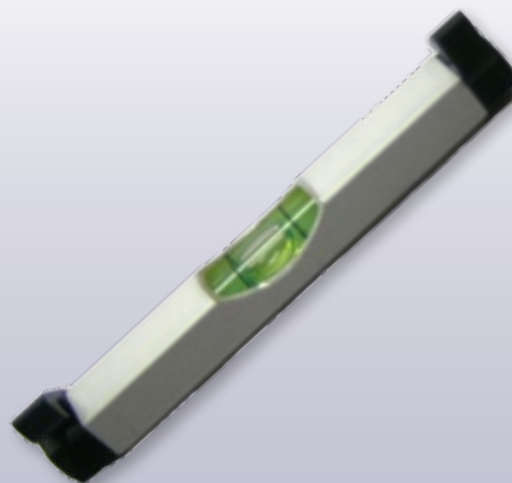


Level Range

Being lightweight is key when it comes to spirit levels. Our range are all super light, but made with strong aluminium. EasyRead crystal clear vials makes finding a level fast and accurate, even in low light. Spear & Jackson spirit levels range from 600mm to 2,000mm and are accurate to within 0.5mm per metre.

SJ-LL75M Line Level - Metal

- Ideal for levelling with a string line
- Clear easy read vial



SJ-KTM230 Torpedo Level

- Ideal 230mm size for small levelling jobs
- 3 Vials for flat, 90° & 45° measuring
- Milled V base
- Shock absorbing end caps
- Magnetic base
- Durable aluminium construction



Measure & Mark

Levels

Precision levels for crossbeams to caravans...

SJ-PRL PRO Magnetic Levels

- 3 High accuracy vials 0.5/1000mm
- Durable corrosion resistant aluminium construction
- Magnetic CNC milled base
- Metric ruler markings
- Dual material ergonomic hand grips
- Prism viewer for tight vertical applications
- Shock protecting reinforced end caps



SJ-PRL6 600mm, 5 Pack
SJ-PRL8 800mm, 5 Pack

SJ-PRL12 1200mm, 5 Pack
SJ-PRL20 2000mm, 5 Pack

SJ-PRL2P Twin Pack 600 & 1200mm

SJ-BL Box Levels

- 3 High accuracy vials 0.5/1000mm
- Soft touch hand grips
- Shock protecting end caps
- Metric ruler markings
- Precision machined levelling edges



SJ-BL6 600mm, 5 Pack
SJ-BL8 800mm, 5 Pack

SJ-BL12 1200mm, 5 Pack
SJ-BL2P Twin Pack 600 & 1200mm

SJ-BL45 Bullseye Level

- Levels in 2 plane with a single bubble
- Perfect for caravans or fridges
- Mounting holes for permanent fixing





Measure & Mark Pencils

For all your marking requirements..

SJ-DHP Deep Hole Pencil

Ideal for marking wood, metal, plastic, and ceramics in deep holes or hard to reach places.

- Sturdy metal shaft and durable plastic casing provide maximum lead protection for use in workshops or on site
- Always keep your pencil to hand with the integral holster clip
- Click release button features a convenient built-in lead sharpener
- Ready supplied with a 2B graphite lead



SJ-DHP Pencil

SJ-DHPLEAD Replacement Lead

SJ-PM Paint Markers

- All purpose paint marker
- Suitable for most surfaces
- Weather proof
- Xylene & Toluene free
- 2mm tip

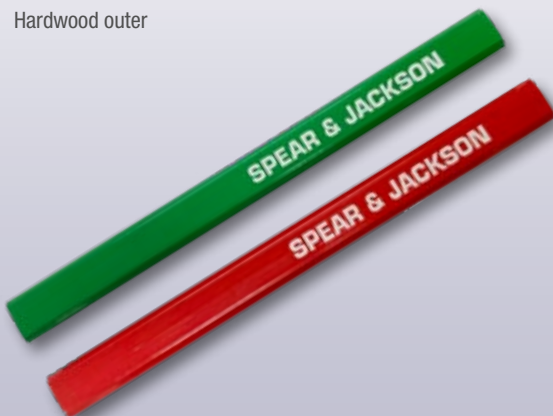


SJ-PM-B Blue
SJ-PM-R Red

SJ-PM-W White
SJ-PM-Y Yellow

SJ-BPEN Builders Pencils

- Hard pencil is suitable for use on concrete, brickwork & other hard surfaces
- Medium/soft pencil is suitable for use on wood & plaster board
- Quality graphite core
- Break resistant
- Hardwood outer



SJ-BPENM, Medium, 72 Pack

SJ-BPENH, Hard, 72 Pack

SJ-BPENMT15 Builders Pencils Medium Tube 15 Piece

- Medium/soft pencil is suitable for use on wood & plaster board
- Quality graphite core
- Break resistant
- Hardwood outer
- Supplied in a durable plastic tube



Measure & Mark

Chalk Line

SJ-CRM100 Chalk Reel

- Used for the marking out of lines for building, brickwork etc.
- Heavy duty metal case
- 30m line



SJ-CR3X 3x Rapid Rewind Chalk Reel

- Used for the marking out of lines for building, brickwork etc.
- Durable plastic case
- 30m line
- Self locking handle & anchor ring
- Leak proof & easy to refill
- Push button line release



SJ-MC Marking Chalk

- Used for the marking out of lines for building, brickwork etc.
- Black & red for more permanent marking
- Blue & yellow for temporary marking
- Suitable for most standard chalk reels



SJ-MCB8	Blue	Standard Temporary	228g
SJ-MCR8	Red	Hi Vis Permanent	228g
SJ-MCY8	Yellow	Hi Vis Temporary	228g
SJ-MCBLK6	Black	Standard Permanent	170g



Craftsman-made quality for over 200 years

Craftsmanship quality dating back to 1760, our Masonry Tools range has developed over time to meet the current needs of modern-day building. With a DIY & professional range available, we provide the perfect tools for every budget and customer, be it professionals or home DIYers



Masonry Tools





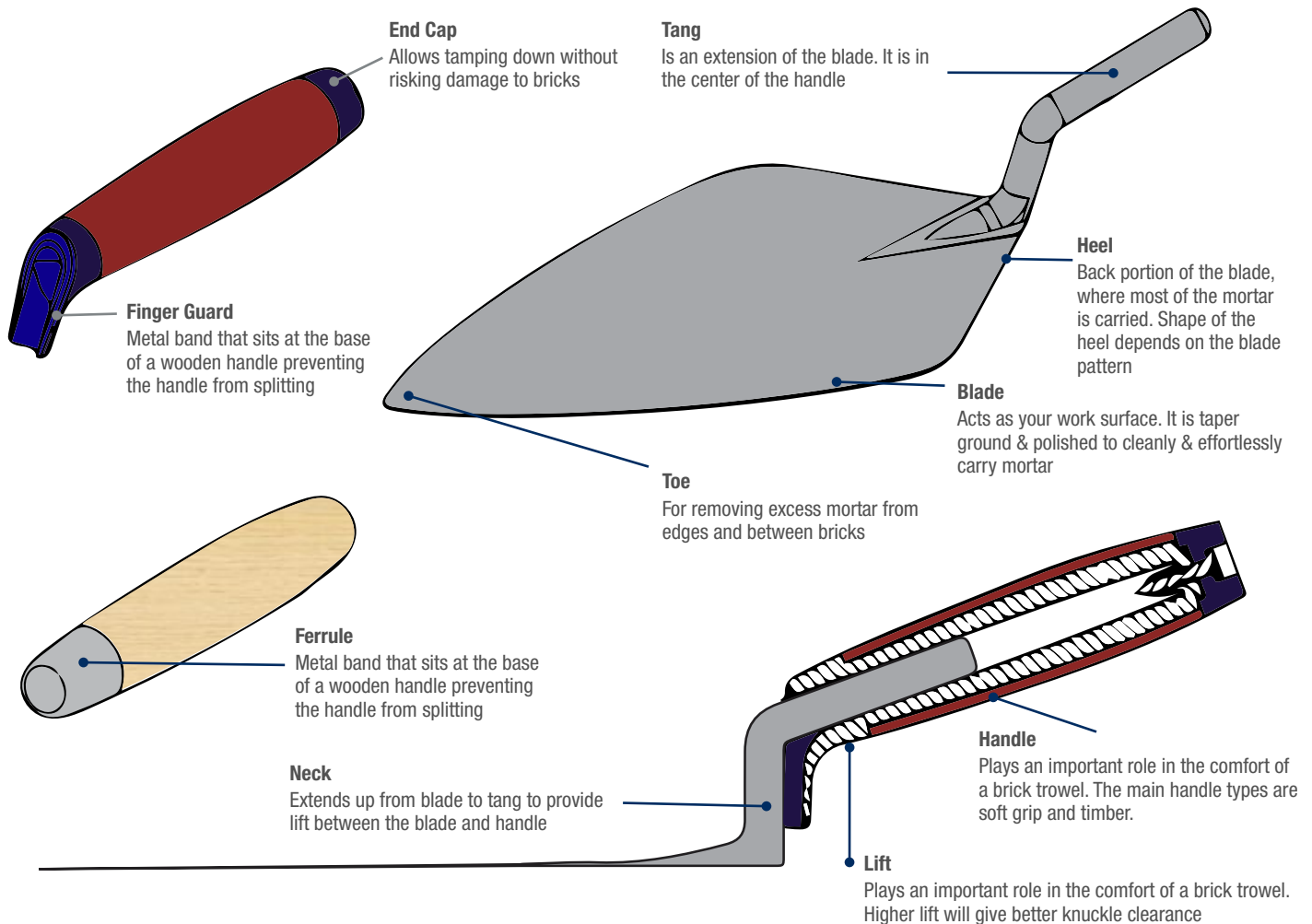
Craftsman-made quality for over 200 years

Craftsmanship quality dating back to 1760, our Masonry Tools range has developed over time to meet the current needs of modern-day building. With a DIY & professional range available, we provide the perfect tools for every budget and customer, be it professionals or home DIYers

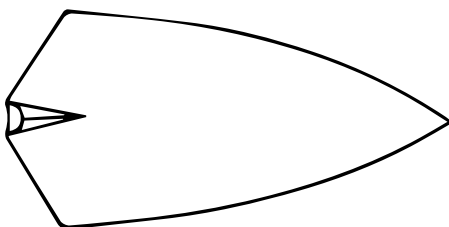
Brickworking

Trowel Anatomy

When using a tool, it's important to know the parts of the tool and how they work. Knowing the parts of a brick trowel and their uses will help you make the best choice of which trowel to use.

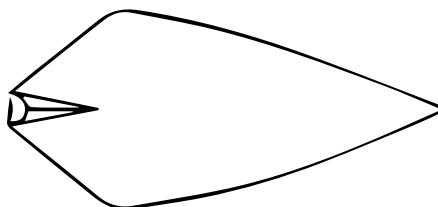


“Pattern” is an industry term used to describe the shape of a Brick Trowel's blade.



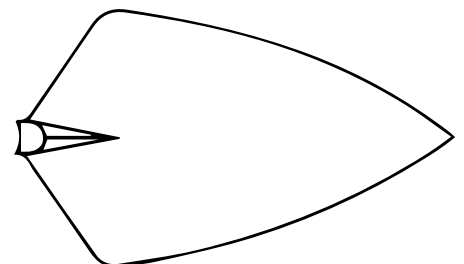
Philadelphia Pattern

Have a wide blade profile designed to hold more mortar making it easier to lay larger building materials like stone, that require more mortar than brick.



London Pattern

Have a narrow blade profile, and a rounded heel. Used in our smaller pointing trowels. Ideal for filling in small cavities and repairing crumbling mortar joints.



Broad Heel Pattern

Was designed for Australian market with a broader heel than the London Pattern, to take more mortar for laying cement/bessa blocks.



Brickworking

With the wealth of knowledge from our Tyzack range we have developed a quality selection of value brickworking tools.

Designed for hard wearing performance, comfort and ease-of-use, this range features soft-feel handles and the highest quality blades for brickwork trowels and ancillary tools. The added feature of integral finger guards on brickwork tools makes for safer working.



Brickworking

Brick & Pointing Trowels

Tyzack professional brickworking tools with solid forged blades and plastic end caps for tapping down...

SJ-10112SF Tyzack Broad Heel Brick Trowel Soft Feel Handle

- Solid forged blade
- Broad blade allows extra capacity for mortar
- Soft feel handle with integral finger guard
- Plastic end cap for tapping down
- Taper ground for progressive flexibility



SJ-10112SF 305mm Soft Feel, 5 Pack

SJ-10712SF Tyzack Philadelphia Brick Trowel Soft Feel, Capped Handle

- Solid forged blade
- Broad blade allows extra capacity for mortar
- Plastic end cap for tapping down
- Taper ground for progressive flexibility



SJ-10712SF 305mm Soft Feel, 5 Pack

SJ-500, SJ-555 Broad Heel Brick Trowel Soft Feel Handle

- Carbon steel blade
- Blade size thickness 1.57mm
- Broad heel pattern
- Ergonomic soft grip handle
- Laser etched blade



SJ-500 250mm Soft Feel, 6 Pack

SJ-555 305mm Soft Feel, 6 Pack

SJ-520, SJ-525 Pointing Trowel Soft Feel Handle

- Carbon steel blade
- Ergonomic soft grip handle
- Laser etched blade



SJ-520 150mm Soft Feel, 6 Pack

SJ-525 175mm Soft Feel, 6 Pack



High quality brickwork and ancillary tools, specifically designed for use by the professional or DIY tradesman...

SJ-BGG Pointing & Grouting Gun

- Ideal for re-pointing brickwork , patios & paving slabs, grouting floor tiles, roof tiling brick replacement & stonework
- Leakage protection for vertical applications
- Quick, precise and accurate
- Provided with 2 spare seals



SJ-BGG, 10mm Nozzle, 4 Pack

SJ-BRH24FG, SJ-BRH24AS Brick Hammer

Used by bricklayers for cutting and fitting bricks and stonework

- Fully polished head
- With a choice of:
Fibreglass Handle - with dual material soft grip
All Steel - forged one piece head & handle with dual material soft grip



SJ-BRH24FG 680g, Fibreglass, 6 Pack

SJ-BRH24AS 680g, All Steel, 6 Pack

SJ-PC180, SJ-PC300 Profile Clamps

- Used for holding a profile pole against brickwork when setting course heights
- Comfortable soft grip handle
- Adjustable depth
- Zinc plated finish



SJ-PC180 180mm 6 Pack

SJ-PC300 300mm 6 Pack

SJ-21258B, SJ-21238C Convex Brick Jointer

- For smooth finishing in between bricks
- Convex profile
- Carbon steel body



SJ-21258B 13/16mm

SJ-21238C 10/13mm

Brickworking

Brick Bolsters & Line Pins

SJ-DBB Brick Bolster

- Dropped forged 115mm blade
- Knuckle guard on grip
- Hardened plastic safety grip
- High visibility colouring



SJ-DEB Electricians Bolster

- Dropped forged 75mm blade
- Knuckle guard on grip
- Hardened plastic safety grip
- High visibility colouring



SJ-LP2P Line Pins

- Forged & hardened steel for strength, resists bending under pressure
- Tapered end ensures the line pin inserts easily into surface material
- Wide head for striking
- Chrome plated to prevent rusting



SJ-LP2P Line Pins Packs of 2, 10 Pack

SJ-PROFLP Tyzack Line Pins

- Made from drop forged and hardened steel for strength, and resists bending under pressure
- Tapered end ensures the line pin inserts easily into surface material
- Extra large head means the line is less likely to become detached whilst in use
- Chrome plated to prevent rusting



SJ-PROFLP Merchandiser 20 pins, 1 Pack



High quality bricklayers line by Spear & Jackson is strong nylon in 8 or 12 strand...

SJ-8/50M Bricklayers Line 8 Strand 50m

- 8 Strand nylon
- 50 Meters
- Available in white, lime green, orange & pink
- Supplied in 12 unit display case



SJ-8/50M White, 12 Pack
SJ-8/50M-LG Lime Green, 12 Pack

SJ-8/50M-O Orange, 12 Pack
SJ-8/50M-P Pink, 12 Pack

SJ-8/100M Bricklayers Line 8 Strand 100m

- 8 Strand nylon
- 100 Meters
- Available in white, lime green, orange & pink
- Supplied in 12 unit display case



SJ-8/100M White, 12 Pack
SJ-8/100M-LG Lime Green, 12 Pack

SJ-8/100M-O Orange, 12 Pack
SJ-8/100M-P Pink, 12 Pack

SJ-12/100M Bricklayers Line 12 Strand 100m

- 12 Strand nylon
- 100 Meters
- Available in lime green & pink
- Supplied in 12 unit display case



SJ-12/100M-LG Lime Green, 12 Pack

SJ-12/100M-P Pink, 12 Pack

SJ-12/500M-LG Bricklayers Line 12 Strand 500m

- 12 Strand nylon
- 500 Meters
- Available in lime green



Brickworking

Bricklayers Line & Block

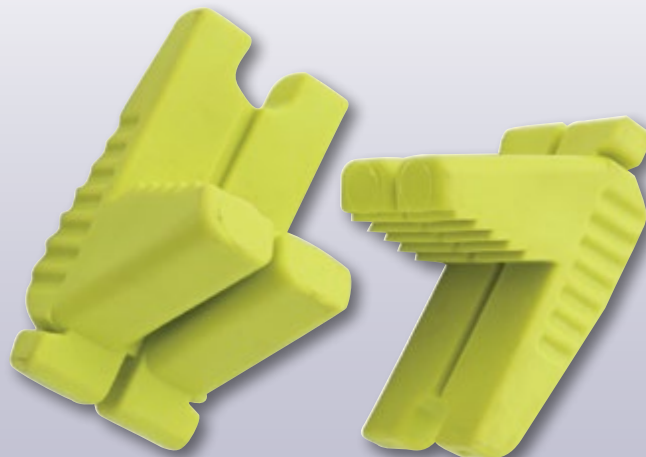


SJ-RLB Rubber Line Block

- Blocks are angled at 87.5° so when under tension, they square up into the corner of the brick for a better grip & a more stable line
- Durable one piece moulded rubber
- Ribbed to prevent slippage when in use
- Supplied in 12 piece coloured display box



SJ-RLB Lime Green



SJ-RLB/O Orange

Tyzack

Plastering Tools

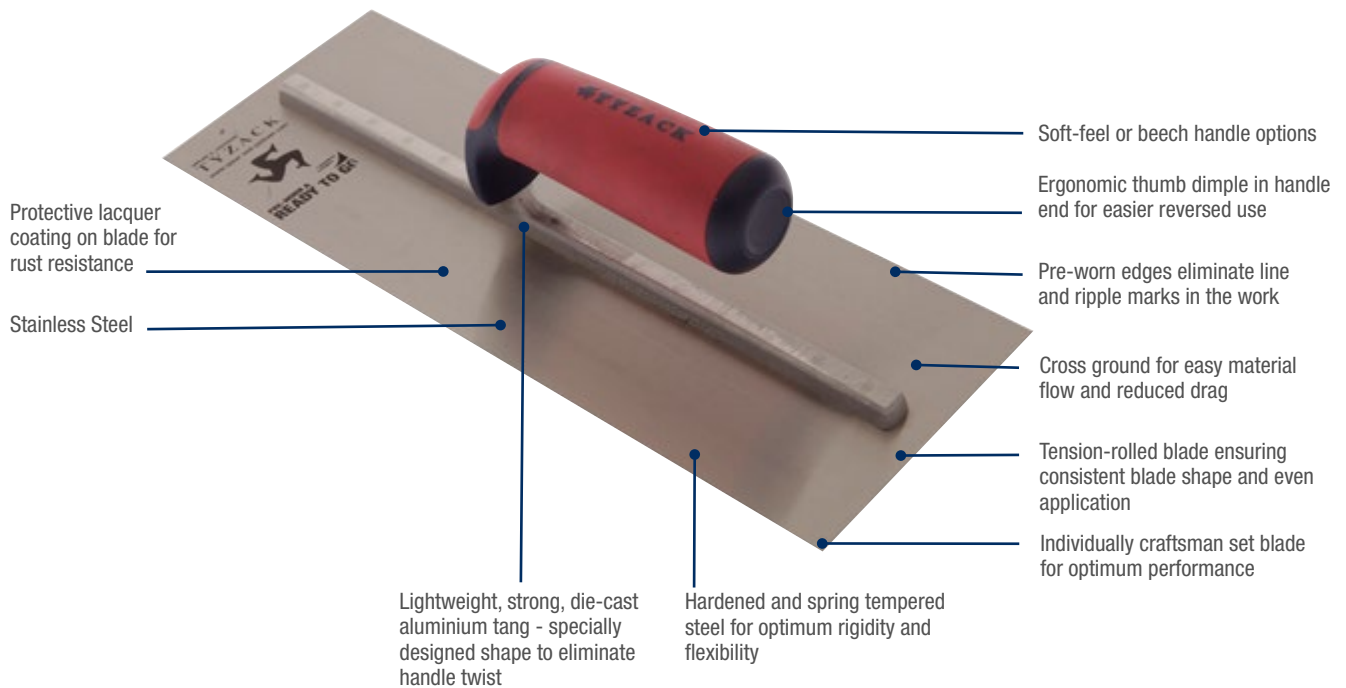
Ever since Joseph Tyzack introduced steel blades to replace traditional wooden trowels in the late 19th century, the **TYZACK** name has set the standard for quality plastering tools. Another innovation was a patented design enabling the blade to be attached to the tang without the need for the rivets to go right through the blade thereby ensuring a totally smooth finish. Importantly, all **TYZACK** trowels are hand 'dished' by time served craftsmen to create a convex blade, solving the problem of 'drag lines' when finishing. Additional features such as hardened and spring tempered blades also ensure that **TYZACK** tools are strong, durable and give outstanding performance.

Available in both carbon and stainless steel with a variety of blade sizes and ergonomic handle options, **TYZACK** is the ultimate in comfort and performance.



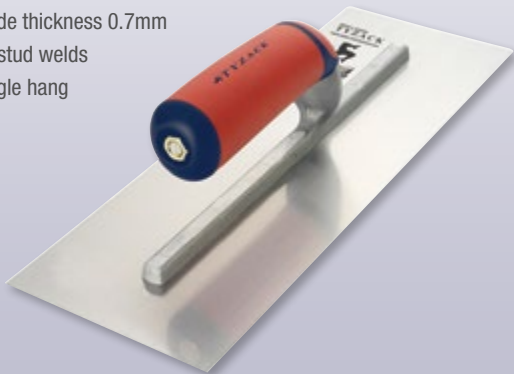
Plastering Tyzack Trowels

Pre-worn to professional standards, our revolutionary trowel is **'READY TO GO'** right from the start...



SJ-14458BISF Tyzack Ready to Go Rounded Corner Trowel

- Individually craftsman set blade for optimum performance
- Rolled tension blade ensures consistent blade shape & even distribution
- Rounded corners to prevent digging in
- Pre-worn edges to eliminate line and ripple marks in the work
- Cross ground for easy material flow & reduced drag
- Soft feel handle for comfortable use
- Stainless steel blade
- Blade thickness 0.7mm
- 10 stud welds
- Single hang



SJ-14458BISF 355mm, 5 Pack

SJ-13100RSF Tyzack Finishing Trowel Soft Feel Handle

- Individually craftsman set blade
- Rolled tension blade ensures consistent blade shape and even application
- Lightweight, strong die-cast aluminium tang
- Stainless steel rivets for longer life & added strength
- Soft feel handle for comfort
- Blade thickness 0.24mm
- 10 stud welds



SJ-13100RSF 280mm Carbon Steel, 5 Pack



Spear & Jackson Plastering Tools

Designed for hard wearing performance, comfort and ease-of-use, this range features soft-feel handles and the highest quality blades for plastering.

Under the Spear & Jackson brand there is a comprehensive range of Plastering tools for both the tradesman and DIY user.

Plastering Trowels

High quality plastering tools, specifically designed
for use by the professional tradesman...

SJ-550, SJ-551 Plastering Trowel Carbon Steel Soft Feel Handle

- Lightweight strong die-cast aluminium tang
- Rivets for longer life and added strength
- Carbon steel blade
- Ergonomically shaped soft feel handle



SJ-550 280mm, 6 Pack

SJ-551 330mm, 6 Pack

SJ-10611SSF 280mm Plastering Trowel Stainless Steel

- Lightweight strong die-cast aluminium tang
- Rivets for longer life and added strength
- Stainless steel blade
- Ergonomically shaped soft feel handle



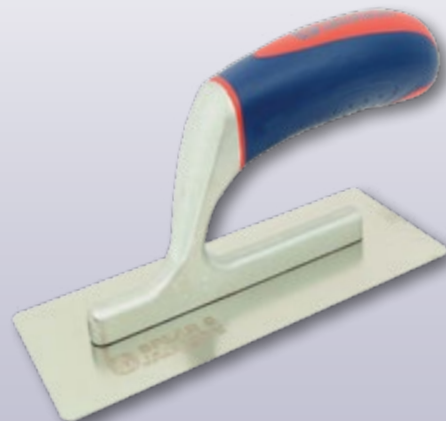
SJ-RF280 Rendering Float Plastic Handle

- Plastic blade
- Ribbed non slip flexible plastic handle
- Blade size 280mm



SJ-10608SF Mini Finishing Trowel Stainless Steel Soft Feel Handle

- Ideal for working in confined spaces
- Stainless steel blade for longer life
- Soft feel handle for extra comfort
- Ergonomically shaped soft feel handle

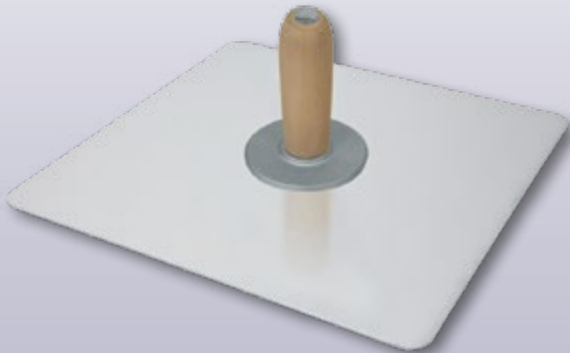




High quality ancillary plastering tools with soft feel & timber handles for comfortable, sustained use...

SJ-370 Plasters Hawk Timber Handle

- Lightweight but strong aluminium blade
- Detachable machined non-slip timber handle
- Blade size 330mm x 330mm



SJ-530, SJ-535 Gauging Trowel Soft Feel Handle

For mixing small amounts of plaster & filling gaps in confined spaces

- Fabricated carbon steel blade
- Soft feel handle with integrated finger guard
- Ergonomically shaped soft feel handle
- Polished and lacquered blade



SJ-530 175mm, 6 Pack

SJ-535 200mm, 6 Pack

SJ-JS10 Jab Saw Suregrip® Handle

- Ideal for use on timber, hardwood, chipboard & MDF
- Comfortable Suregrip® handle
- Teeth cut on forward & reverse stroke
- Pointed to drive through plasterboard



SJ-JSD20 Jab Saw Soft Feel Handle

- Ideal for use on timber, hardwood, chipboard & MDF
- Superior fast action blade
- Impulse hardened cross cut teeth
- Sharpened tip for plunge cuts
- Bi material soft feel handle



Plastering Ancillary Tools

SJ-SK25 Stiff Scraper 25mm

- Stainless steel stiff blade
- Rosewood timber handle
- For applying joint fillers, patching, scrapping jobs & trimming wallpapers



SJ-SK50 Stiff Scraper 50mm

- Stainless steel stiff blade
- Rosewood timber handle
- For applying joint fillers, patching, scrapping jobs & trimming wallpapers



SJ-SK75 Stiff Scraper 75mm

- Stainless steel stiff blade
- Rosewood timber handle
- For applying joint fillers, patching, scrapping jobs & trimming wallpapers



SJ-SK100 Stiff Scraper 100mm

- Stainless steel stiff blade
- Rosewood timber handle
- For applying joint fillers, patching, scrapping jobs and trimming wallpapers



SJ-718F Tyzack 100mm Jointing Knife

Jointing knife with handle ends for knocking back protruding nails

- Suregrip® handles
- Flexible stainless steel blades





Sponge & Poly Floats

Upgrade your plastering with our high-quality sponge and poly floats! Perfect for pros and DIYers, these tools ensure smooth finishes effortlessly. Our sponge offers superior absorption, while the poly floats give precision and control. Elevate your craftsmanship today.

Plastering Poly Floats

High quality sponge & poly floats...

SJ-PHS300 Poly Sanding Float

- One piece polypropylene handle & base
- Neoprene cushion to improve sanding capabilities
- Mounting bars with screw clamps for sand paper
- Supplied with fine sand paper
- Blade size 280mm x 108mm



SJ-PD101 Sponge Float

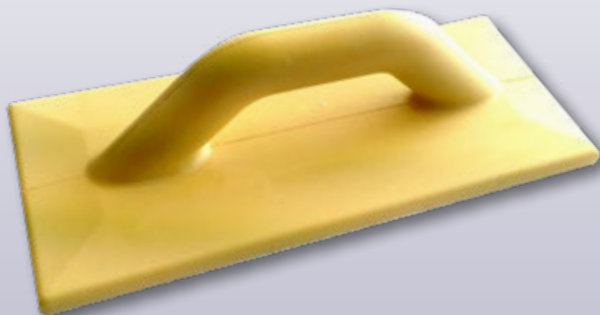
For finishing grainy surfaces such as sand and cement mix

- A firm rubber 20mm thick sponge
- One piece polyurethane handle & base
- Blade size 140mm x 230mm



SJ-PA101, SJ-PA105 Polyurethane Floats

- One piece poly handle & base
- Textured surface
- Lightweight



SJ-PA101 280mm, 6 Pack

SJ-PA105 350mm, 6 Pack

SJ-PF100, SJ-PF200 Polypropylene Floats

- One piece polypropylene handle & base
- Textured surface
- Lightweight



SJ-PF100 280mm, 6 Pack

SJ-PF200 340mm, 6 Pack



Plastering Ancillary Tools

EG-221 Caulking Gun Open Frame

- Open frame
- Hang hook
- Strong contoured trigger
- 220mm metal construction



SJ-PCG Caulking Gun Premium Half Barrel Frame

- Premium quality
- Half barrel frame
- Hang hook
- Strong contoured trigger
- 225mm metal construction



EM-TC0346 Glass Cutter Plastic Body

- Clear plastic body
- Oil lubricated
- Tungsten carbide cutting wheel
- Glass breaker end



SJ-FS000 Floor Scraper T-Frame Handle

- Replaceable carbon steel blade
- Strong steel blade holder with butterfly nuts
- Tubular steel T-frame handle to prevent bending or breaking when in use



SJ-FS200 200mm, 3 Pk

SJ-FS300 300mm, 3 Pk

SJ-FS000B Replacement Blade for Floor Scraper

- Replacement carbon steel blade
- Supplied with butterfly nuts
- SPECIAL ORDER ONLY



SJ-FS200B 200mm, 6 Pk

SJ-FS300B 300mm, 6 Pk



Concreting Tools

Designed for professionals and DIY users alike, this range of concreting tools has been built to the same exacting standards of all Spear & Jackson products.

A range of floats and accessories produced using innovative manufacturing techniques to give durable, well finished product that can be used every day.

Concreting Finishing Trowels

High quality concreting tools, specifically designed
for use by the professional tradesman...

SJ-CF Concrete Finishing Trowel Soft Feel Handle

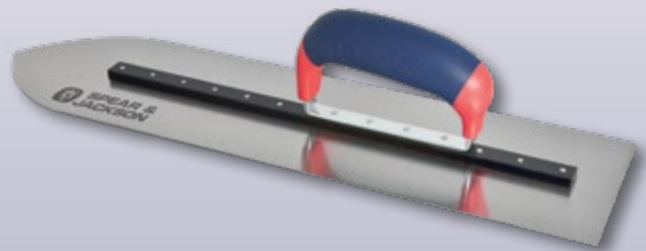
- Carbon steel blade
- Blade size thickness 0.70mm
- Ergonomic soft grip handle
- Laser etched blade



SJ-CF280 280mm Carbon Steel, 6 Pack SJ-CF405 405mm Carbon Steel, 6 Pack

SJ-PF Concrete Pointed Finishing Trowel Soft Feel Handle

- Pointed nose
- Blade thickness 0.7mm
- Carbon steel blade
- Ergonomic soft grip offset handle
- Laser etched blade



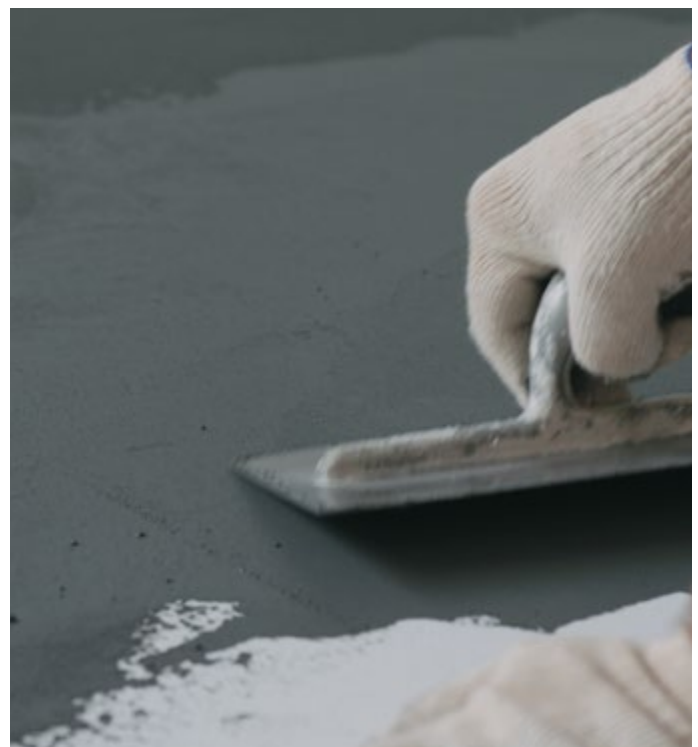
SJ-PF355 280mm Carbon Steel, 6 Pack SJ-PF405 405mm Carbon Steel, 6 Pack SJ-PF450 450mm Carbon Steel, 6 Pack

SJ-5010 Pine Float

- Pine timber blade
- Comfortable plastic handle



SJ-50102 270mm, 12 Pk SJ-50103 375mm, 12 Pk SJ-50104 605mm, 12 Pk



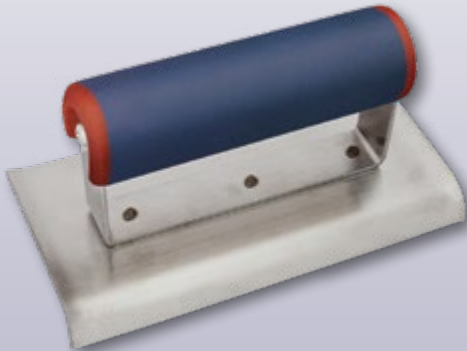


Concreting Edgers

High quality ancillary plastering tools with soft feel & timber handles for comfortable, sustained use...

SJ-540 Cement Edger Soft Feel Handle

- 10.8mm radius
- Stainless steel 150mm blade
- Ergonomic soft grip handle
- Laser etched blade



SJ-348 Cement Edger Timber Handle

- 10.8mm radius
- Stainless steel 150mm blade
- Timber handle
- Laser etched blade



SJ-345 Cement Groover Timber Handle

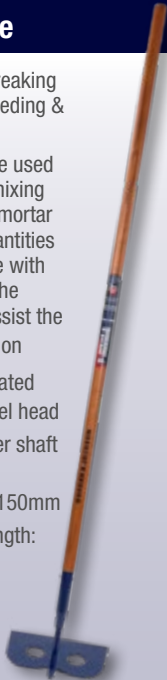
- Groove depth 9mm
- Stainless steel blade
- Timber handle
- Laser etched blade



Concreting Ancillary Tools

SJ-MH1 Mortar Hoe

- Ideal for breaking up soil, weeding & cultivating
- Can also be used for quick mixing of plaster, mortar & small quantities of concrete with outlets in the blade to assist the mixing action
- Powder coated carbon steel head
- Long timber shaft
- Head Size: 230mm x 150mm
- Handle Length: 1400mm



SJ-CPR Concrete Rake

- Designed for the shifting & placing of wet concrete during construction
- Full aluminium head & handle
- Head profiled for push pull action
- Head stays to improve rigidity
- Can be used for the spreading & levelling of sand & soil
- Head Size: 500mm x 100mm
- Handle Length: 1500mm



SJ-WS350 Contractor Square Mouth Shovel

- Ideal for shovelling/mixing soils, sand & concrete
- All steel construction
- Handle Type: D Handle
- Blade Size: 300mm x 255mm
- Handle Length: 835mm



SJ-WS360L Contractor Square Mouth Shovel

- Ideal for shovelling/mixing soils, sand & concrete
- All steel construction
- Handle Type: Long
- Blade Size: 300mm x 255mm
- Handle Length: 1190mm



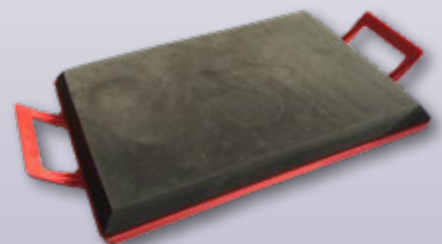
SJ-HG401 Hopper Gun

- Lightweight plastic hopper with grip
- 45° elbow to prevent spillage
- 3mm nozzle
- Contoured comfort trigger
- Material flow adjustment
- Air regulator
- Adjustable nozzle
- Hanging hoop



SJ-KB Kneeler Board

- Kneeler board for concreter
- One piece poly tray with handles
- Pad size 500mm x 100mm
- Memory foam for maximum comfort
- Used for kneeling on concrete pads when doing finishing work



SJ-HG401 Hopper Gun

SJ-HG401-K1 Hopper Gun Repair Kit (Special Order Only)



Available from all good hand tool stockists

These products are guaranteed against defects in manufacturing, subject to wear and tear and the provision of reasonable care and maintenance.

This does not affect your statutory rights.

**CONTACT
US!**

QEP Australasia

Tel: 1300 731 818

Email: sjsales@qepaust.com.au

Follow us on:



FIND OUT MORE AT www.spearandjackson.com.au



Distributed by:

QEP Australasia

68 Prosperity Way, Dandenong South, Victoria Australia 3175

www.qepaustralasia.com.au

