

Professional Workshop Hand Tools  
**THE TOOLS TO TRUST**





---

## THE TOOLS TO TRUST

Eclipse was founded in the City of Sheffield which is famous for the production of steel, cutlery and hand tools and continues to be our home over 250 years later.

In 1889, James Neill formed his own company adopting the Eclipse brand name. Initially manufacturing steel, he moved on to manufacture machine knives, woodworking tools and hacksaw blades, for which the company is best known.

The Spear & Jackson range was developed independently of Eclipse branded products until 1985 when James Neill acquired the Spear & Jackson group, subsequently renaming the company as Spear & Jackson.

The Spear & Jackson brand is probably best known for our unparalleled offering of quality ranges of garden digging and cultivating tools and cutting tools, all of which are designed to appeal to all levels of garden expertise and budget.

While Eclipse is recognised worldwide as the professionals' choice for metal cutting and machinery workshop hand tools.

As you would expect with over 250 years of experience, the Spear & Jackson ground work product offering has widened to accommodate natural product extensions such as contractors

shovels and rakes, agricultural tools and landscaping products.

Spear & Jackson hand tools developed alongside our ground work ranges and include tools for DIY and professional use, with our market leading "Predator" branded wood saws being the first range to be application lead, giving users the most appropriate saw for the task.

The Eclipse product range also has widened to accommodate natural product extensions, such as holesaws, jigsaw blades, reciprocating blades, locking jaw pliers, bolt and cable cutters, aviation snips, riveters, vices, heavy duty woodworking and metalworking clamps, engineers hand tools, plumbing tools, adjustable wrenches, hose clips and torque control tools. All designed and manufactured to the highest possible quality standards.

We also sell a wide range of builder's tools and accessories with prices and qualities to suit all levels of expertise including the well known Tyzack brand of professional brick laying and plasterer's tools.

Spear & Jackson Australia is a division of the Spear & Jackson

Group, which also includes within it's other divisions the following brands:

- Moore & Wright
- Eclipse Magnetics
- Bowers
- Baty
- Robert Sorby

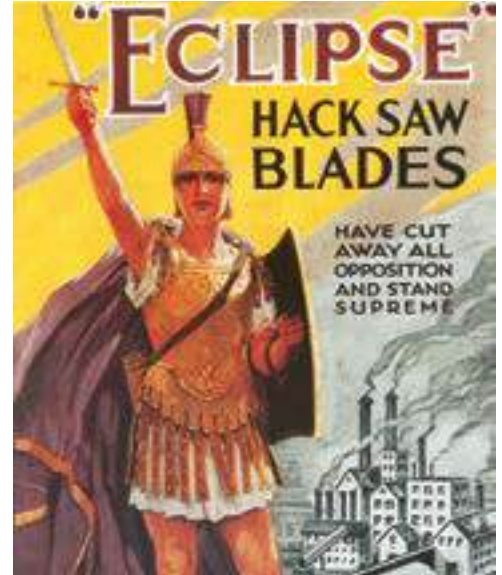
Spear and Jackson Australia was established in May 1957 and continues to provide customers with a great range of products.

Spear & Jackson head office is based in the UK with other sites in North America, France, China.

Throughout development of the Spear & Jackson brand, the company has always continued to innovate both in terms of new ideas and applications, using new technologies and combining new and traditional materials to create reliable, superb quality, highly functional tools at affordable prices, creating our enviable reputation as a supplier of **the tools to trust**.

# Eclipse

## Brand Heritage



### Eclipse Quality Guarantee

\*Eclipse Professional Tools are warranted to be free from defects in material and workmanship for the life of the tool under normal conditions of use, excluding damage arising from misuse or alteration. Your statutory rights are not affected.



### The Official Mark of Quality

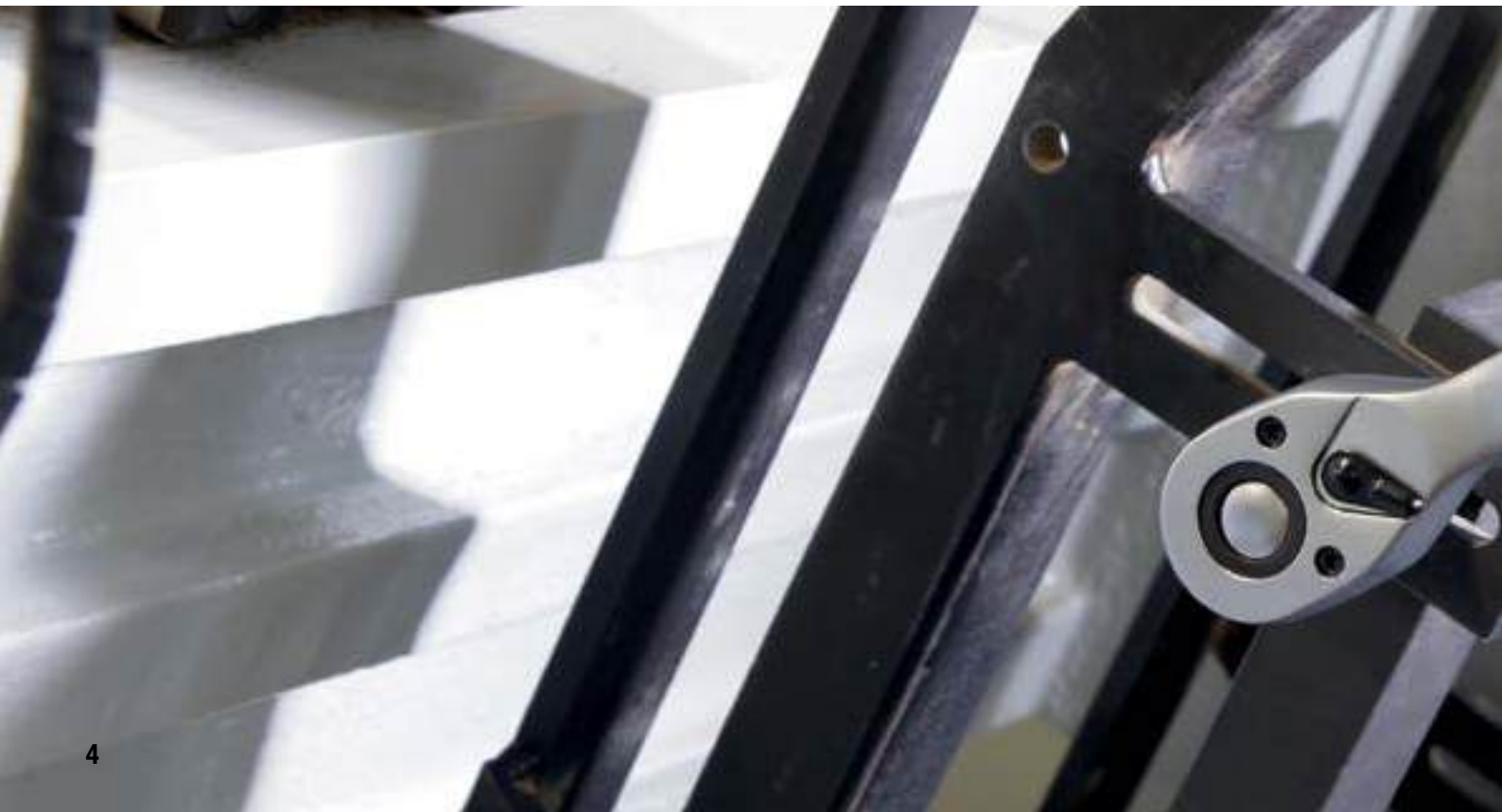
Dedication to quality has earned official accreditation of the BSEN ISO 9001:2015 Quality Assurance Certificate for the general manufacture of all our hand tools. This represents another important milestone in NEILL TOOLS history, since this is internationally recognised as a mark of quality. In addition, we guarantee all our tools and products against defective workmanship and materials so you can be sure of first-class performance.



Cert No. FM642368



<b>Brand Heritage</b>	<b>2</b>
<b>Metal Cutting</b>	<b>6</b>
Predator Hacksaw Blades	7
Hand Hacksaw Blades	13
Saw Frames	14
<b>Cutting</b>	<b>18</b>
Bolt Cutters	19
Aviation Snips	23
General Purpose & Jewellers' Snips	25
<b>Wood Chisels</b>	<b>26</b>
<b>Screwdrivers &amp; Driver Bits</b>	<b>28</b>
Socket Sets	30
Screwdriver Sets	34
Hex Keys	36
<b>Gripping &amp; Plumbing Tools</b>	<b>38</b>
Plumbing Tools	41
Adjustable Wrenches	43
Locking Pliers	44



# Contents

## Find what you're looking for

---

<b>Workholding Solutions</b>	<b>51</b>	
Vices	52	
F Clamps	58	
One Handed Bar Clamps	60	
G Clamps	68	
Metalworking Clamps	70	
<b>Riveters &amp; Insert Tools</b>	<b>76</b>	
Compact Series	78	
Traditional Series	84	
<b>Industrial Hammers</b>	<b>86</b>	
Normalised	87	
Dead Blow	89	
<b>Measuring</b>	<b>90</b>	
<b>Engineers' Tools</b>	<b>93</b>	
Files & Scrapers	95	
Punches	96	
Pin Vices & Chucks	97	
Scribers	98	
Tap Wrenches	99	



**ECLIPSE**  
PREDATOR™

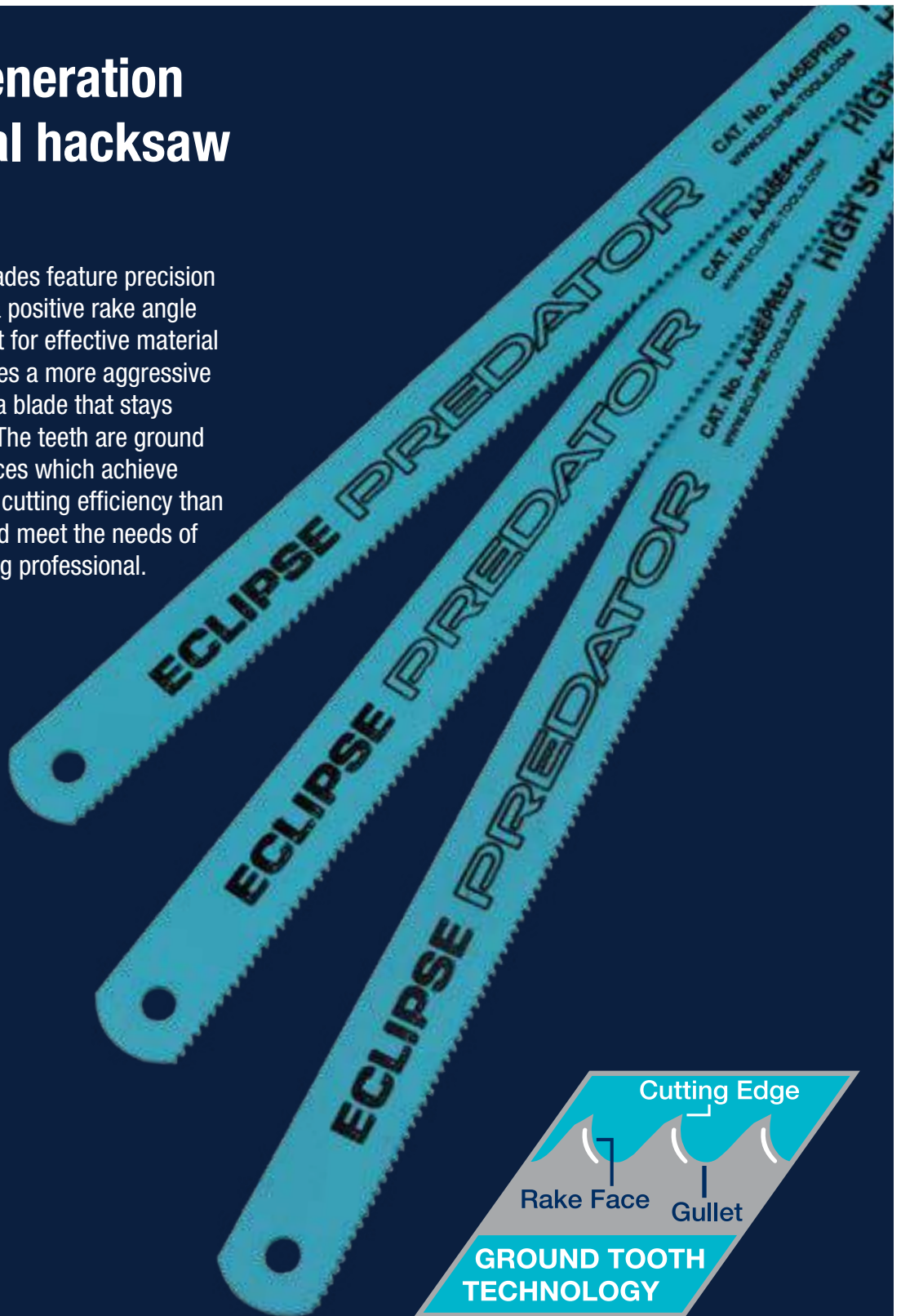


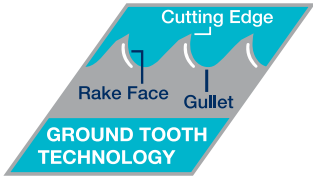
# Metal Cutting

## Predator Hacksaw Blades

### A new generation of bimetal hacksaw blades

Eclipse Predator blades feature precision ground teeth with a positive rake angle and a smooth gullet for effective material removal. This creates a more aggressive and faster cut and a blade that stays sharper for longer. The teeth are ground to very fine tolerances which achieve significantly higher cutting efficiency than standard blades and meet the needs of the most demanding professional.





Tests show that our Eclipse Bimetal hacksaw blades are quicker through the first cut than competitor blades and have a longer life.

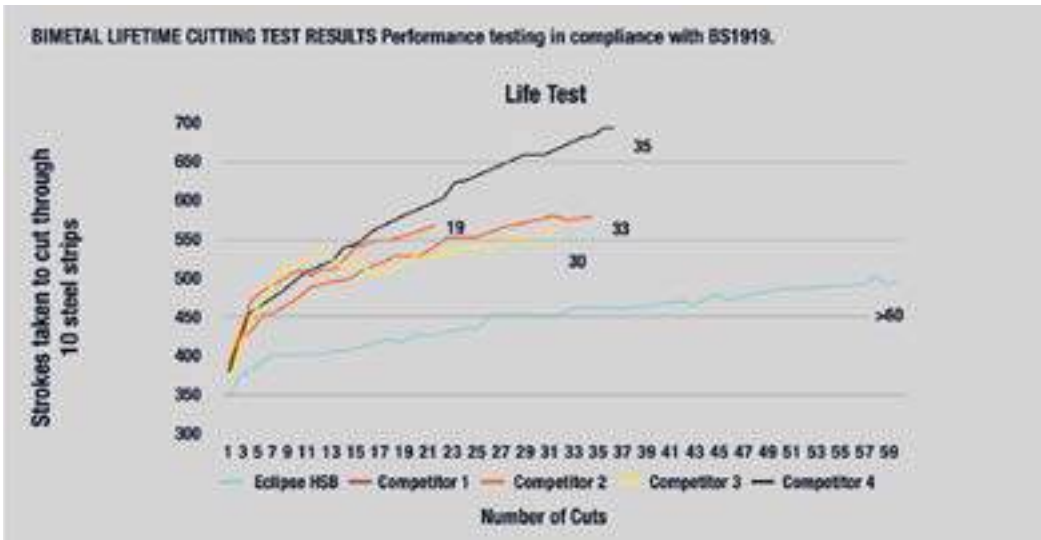
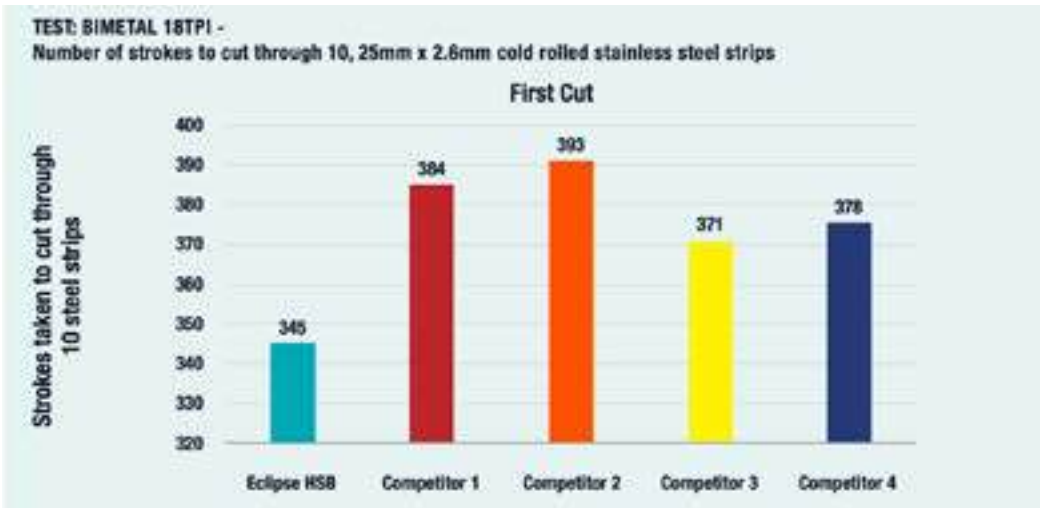
Test criteria

- Tested in accordance with BS1919 for High Speed Steel (HSS) Bimetal hand hacksaw blades
- Tests were carried out on a calibrated power hacksaw machine at 70 strokes per minute
- Test material used was cold rolled stainless steel strip 25mm x 2.6mm, in accordance with recognised industry standards

Products tested

- Eclipse Bimetal blade 18TPI
- Competitor Bimetal blade 18TPI

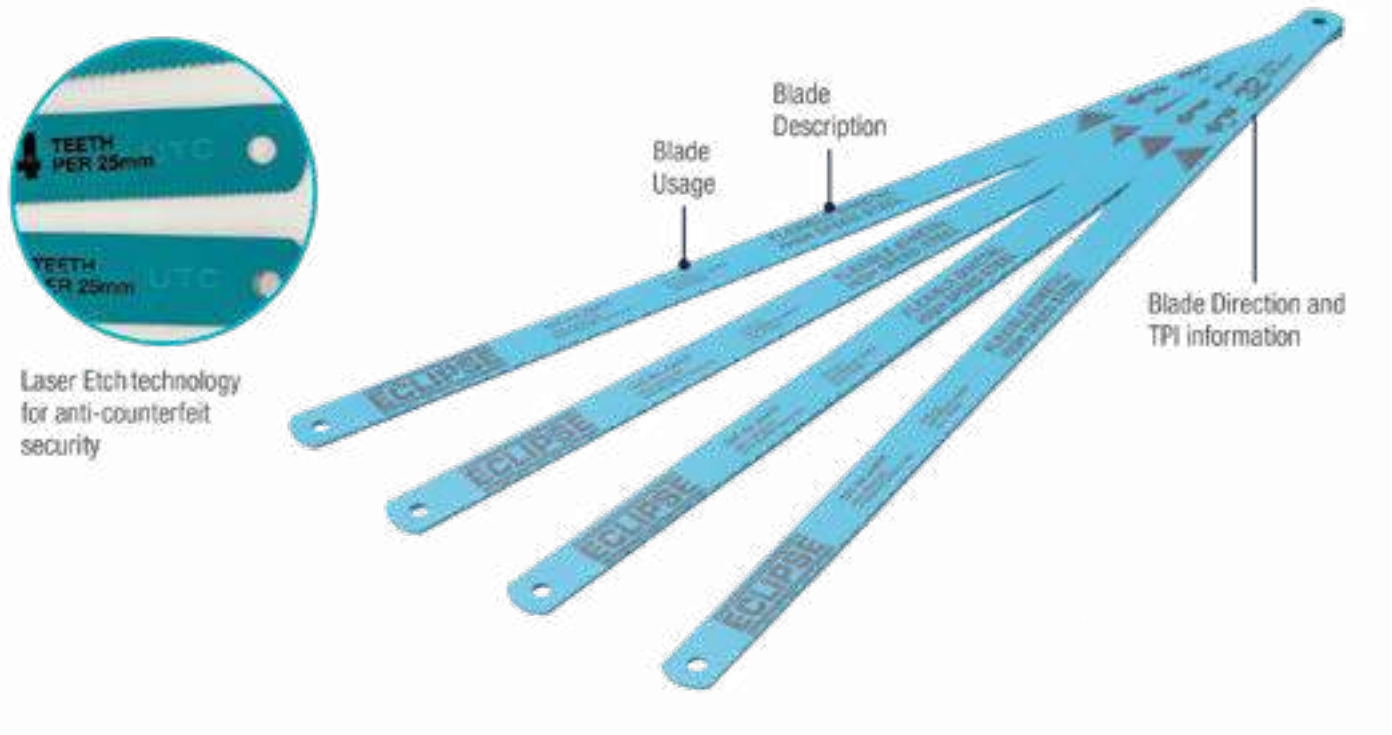
**Eclipse Predator Bimetal blade** is significantly quicker through the first cut than competitor blade



**Eclipse Predator Bimetal blade** has a significantly longer life than competitor blade

# Metal Cutting

## Manufacturing Predator Hacksaw Blades



### STATE OF THE ART MANUFACTURING

Eclipse hacksaw blades and small saw blades are manufactured at our own state of the art factory. Continuous innovation and investment ensures the best cutting performance across all our Bimetal and All Hard hacksaw blades and small saw blades i.e. Junior Blades.

You can take a closer look at our manufacturing capabilities on our Youtube channels:

**Manufacturing video:**  
<https://bit.ly/37AcDsf>

**Testing video:**  
<https://bit.ly/326Aten>



Market leading professional quality hand hacksaw blades, with bimetal qualities..

## Predator Flexible Bimetal HSS

A virtually unbreakable blade for superb cutting performance, wear resistance and safety. Eclipse Predator blades feature precision ground teeth with a positive rake angle, and a smooth gullet for effective material removal, creating a more aggressive and faster cut and a blade that stays sharper for longer.

- Manufactured from M2 high speed steel
- Faster cut than standard bimetal Hacksaw Blades
- Sharper first cut
- Longer Life



Part No.	Blade Size (mm)	Teeth per 25mm	Blades in Pack	Box Qty
EC-AA45EPRED	300 x 12.5 x 0.63	18	100	1
EC-AA46VPRED	300 x 12.5 x 0.63	24	100	1
EC-AA47RPRED	300 x 12.5 x 0.63	32	100	1

## Predator Flexible Bimetal HSS Blades Retail Pack

Part No.	Blade Size (mm)	Teeth per 25mm	Blades in Pack	Box Qty
EC-71-418RPRED	300 x 12.5 x 0.63	18	2	10
EC-71-424RPRED	300 x 12.5 x 0.63	24	2	10
EC-71-432RPRED	300 x 12.5 x 0.63	32	2	10
EC-71-624RPRED	300 x 12.5 x 0.63	18, 24, 32	3	10

## Packaging Options

Our Hacksaw Blades are available in traditional cardboard boxes (100), they are also available in 2 blade retail packs featuring plastic hangers with euro slots.



# Metal Cutting Predator Hand Hacksaw Blades

All Hard blades for highly accurate cutting and long life...

## Predator All Hard HSB

Eclipse Predator All Hard blades feature precision ground teeth with a positive rake angle, and a smooth gullet for effective material removal, creating a more aggressive and faster cut and a blade that stays sharper for longer. Manufactured entirely from M2 High Speed Steel, each blade is precisely hardened throughout its entire width to give a strong, rigid back ensuring a perfectly straight cut every time.

- M2 High Speed Steel Blade
- Hardened blade for a straight cut
- Faster cut than standard All Hard Hacksaw Blades



Part No.	Blade Size (mm)	Teeth per 25mm	Blades in Pack	Box Qty
EC-AE45BPRED	300 x 12.5 x 0.63	18	100	1
EC-AE46XPRED	300 x 12.5 x 0.63	24	100	1
EC-AE47KPRED	300 x 12.5 x 0.63	32	100	1

## Predator All Hard HSB Blades Retail Pack

Part No.	Blade Size (mm)	Teeth per 25mm	Blades in Pack	Box Qty
EC-71-518RPRED	300 x 12.5 x 0.63	18	2	10
EC-71-524RPRED	300 x 12.5 x 0.63	24	2	10
EC-71-532RPRED	300 x 12.5 x 0.63	32	2	10

## Packaging Options

Our Hacksaw Blades are available in traditional cardboard boxes (100), they are also available in 2 blade retail packs featuring plastic hangers with euroslots.



High quality flexible shatterproof hand hacksaw blades suitable for occasional DIY use...

## Flexible Shatterproof HSS

A virtually unbreakable, edge hardened blade that offers flexibility and safety but less wear resistance than a All Hard or BiMetal blade.

- Shatterproof Blade
- Long Life



Part No.	Blade Size (mm)	Blade Size (")	Teeth per 25mm	Blades in Pack	Box Qty
EC-AS45A	300 x 12.5 x 0.63	12 x ½ x 0.025	18	100	1
EC-AS46D	300 x 12.5 x 0.63	12 x ½ x 0.025	24	100	1
EC-AS47P	300 x 12.5 x 0.63	12 x ½ x 0.025	32	100	1

## Flexible Shatterproof Blades Retail Pack

Part No.	Blade Size (mm)	Teeth per 25mm	Blades in Pack	Box Qty
EC-71-324R	300 x 12.5 x 0.63	24	2	10
EC-71-332R	300 x 12.5 x 0.63	32	2	10
EC-71-318R5	300 x 12.5 x 0.63	18	5	10
EC-71-324R5	300 x 12.5 x 0.63	24	5	10
EC-71-332R5	300 x 12.5 x 0.63	32	5	10

## Packaging Options

Our Hacksaw Blades are available in traditional cardboard boxes (100), they are also available in 2 & 5 blade retail packs featuring plastic hangers with euroslots.



# Metal Cutting Hand Hacksaw Blades

High quality flexible silicon hand hacksaw blades specifically for DIY applications...

## Flexible Silicon Shatterproof

A virtually unbreakable blade suitable for DIY use. Manufactured from low alloy silicon steel, this blade is ideal for general purpose sawing of mild steel, brass, aluminium, copper and other soft metals.

- General Purpose
- Shatterproof Blade



Part No.	Blade Size (mm)	Teeth per 25mm	Blades in Pack	Box Qty
EC-AM45W	300 x 12.5 x 0.63	18	100	1
EC-AM46B	300 x 12.5 x 0.63	24	100	1
EC-AM47X	300 x 12.5 x 0.63	32	100	1

## Hand Blade Tooth Pitch Selection

To select the hacksaw blade with the correct number of teeth for the task, consider the following elements:

### How thick is the material to be cut?

For thin sections, the highest number of teeth should be used

### What type of material is to be cut?

The table below is a guide to tooth pitch selection for different materials and various thickness's

Workpiece Material	Workpiece Thickness				
	<3mm	3mm	6mm	10mm	13mm
Magnesium Aluminium Free Machining Low Carbon Steels	32	24	18	14	
Brass, Copper, Carbon Steels, Low and Medium Carbon Structural Steels	32	24	18	14	
High Carbon Steels, Bronze, Tool Steels, Die Steel, Alloy Steels, Stainless Steels, Copper Alloys Malleable Cast Iron, Titanium Alloys, High Temperature Alloys (Inconel, Nimonic, Hastelloy, Incolony), Nickel Alloys (Monel, Duranickel)	32	24		18	



## Saw Frames Range

A choice of hacksaw frames designed for the professional user for cutting a wide range of metals and other materials, including the 70-24TR high tension saw frame with a quick blade change mechanism.

# Metal Cutting Hacksaw Frames

A choice of hacksaw frames designed for the professional user for cutting a wide range of metals and other materials, including the EC-70-24TR high tension saw frame with a quick blade change mechanism...

## EC-70-24TR High Tension Professional Hacksaw Frame

Aluminium frame is lightweight, strong and durable resulting in less fatigue during prolonged use.

- It can maintain blade tension up to 200 Kg force to ensure accurate and straight cutting performance
- Features a quick blade change mechanism to save time in the workshop and an alternative 45° blade mounting for flush cutting
- Supplied with an Eclipse shatterproof bimetal 24TPI blade.

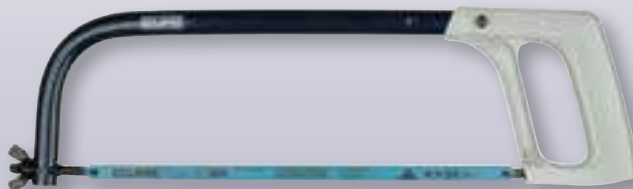


Part No.	Length	Height	Blade Supplied	Pack Qty.
EC-70-24TR	410mm	150mm	Predator BiMetal 24TPI	6

## EC-20TND Pro Hacksaw Frame

Strong, tubular frame complete with a die cast handle for greater comfort and control when sawing.

- Maintains optimum blade tension to ensure accurate and straight cutting performance
- Supplied with an Eclipse shatterproof bimetal 24TPI blade

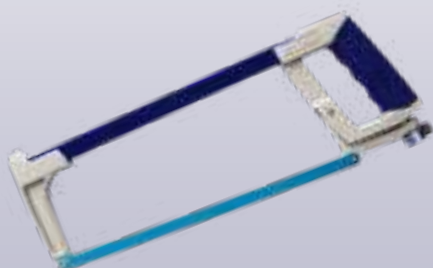


Part No.	Length	Height	Blade Supplied	Pack Qty
EC-20TND	465mm	130mm	Predator BiMetal 24TPI	6

## EC-422 Box Hacksaw Frame

Cuts most metals and plastics

- Comfortable soft grip handle and steel frame
- Adjustable for 55° cutting
- Can be used as Compass Saw
- Adjustable easy blade tensioning



Part No.	Length	Height	Blade	Pack Qty
EC-422	400mm	132mm	Generic	6

## SJ-HS10 DIY Hacksaw Frame

Rigid box frame design

- Blade adjustment allows for 55° & 90° cutting
- Accepts standard 300mm hacksaw blades

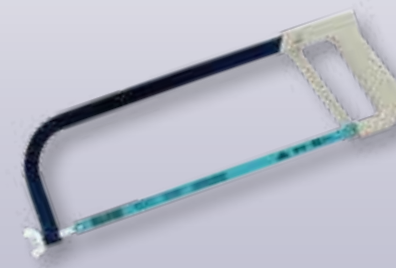


Part No.	Length	Height	Blade	Pack Qty
SJ-HS10	450mm	132mm	Generic	10

## EC-16TND Hacksaw Frame

A lightweight, economical hacksaw frame with strong, box section tubular steel frame

- Comfortable and durable cast aluminium handle.
- Extra long location pin gives increased security of the tensioning bit
- Supplied with an Eclipse shatterproof bimetal 24TPI blade



Part No.	Length	Height	Blade	Pack Qty
EC-16TND	430mm	132mm	Predator 24TPI	10

Junior hacksaw frames available with a choice of handle types for wood and metal cutting, pad saws for cutting in restricted areas and general purpose saws for wood and plastic cutting. The EC-15TND is ideal for use in awkward or restricted areas...

### EC-15TND Mini Hacksaw Frame

Mini hacksaw frame ideal for use in awkward or restricted areas.

- Strong aluminium frame for extra durability
- Easy blade changing mechanism without the need for extra tools
- Blade length can be changed to enable 80% of the blade to be used increasing cutting efficiency
- Ergonomic soft grip handle with a thumb grip
- Supplied with an Eclipse shatterproof bimetal 24TPI blade



Part No.	Length	Height	Blade Supplied	Pack Qty
EC-15TND	320mm	55mm	Predator BiMetal 24TPI	12

### EC-70-14JR Junior Hacksaw Frame

Junior Hacksaw with a powder coated steel frame and Eclipse metal cutting blade.

- Easy blade change
- Universal saw cuts metal, wood and plastics



Part No.	Length	Height	Blade Supplied	Pack Qty
EC-70-14JR	260mm	67mm	Jr Hacksaw - Metal	12

### EC-70-675R Pro Junior Hacksaw Frame

Junior hacksaw with plastic moulded pistol grip comfort handle, steel frame and Eclipse blade.

- Blade tensioning device incorporated in the handle
- Supplied with Eclipse metal cutting blade



Part No.	Length	Height	Blade Supplied	Pack Qty
EC-70-675R	250mm	100mm	Jr Hacksaw - Metal	5



# Metal Cutting

## Specialist Saw Frames & Blades

A range of specialist saw frames for cutting and shaping various materials such as wood, bone, plastics and jewellery...

### SJ-7CP Coping Saw

Coping saw for cutting and shaping in wood.

- Comfortable wooden handle and steel frame
- Blades can be positioned at any angle to the frame
- Supplied with Eclipse 14TPI Coping Saw blade



Part No.	Length	Height	Blade Supplied	Pack Qty
SJ-7CP	315mm	130mm	Coping Blade 14TPI	5

### EC-70-CP1RSF Coping Saw

Coping saw for cutting and shaping in wood

- Soft-feel handle for extra comfort and steel frame
- Blades can be positioned at any angle to the frame
- Supplied with Eclipse 14TPI Coping Saw blade



Part No.	Length	Height	Blade Supplied	Pack Qty
EC-70-CP1RSF	317mm	317mm	Coping Blade 14TPI	5

### SJ-72-66XR General Purpose Saw

General purpose saw for cutting through wood, plastics and soft metals (such as nails).

- Polyester coated blade and die cast handle
- Blade has 9 pre-set positions for versatility whilst cutting in awkward or confined areas
- Replacement blade available



Part No.	Length	Teeth Per Inch	Pack Qty
SJ-72/66XR	465mm	10	5
SJ-73/66SR	375mm	10	10

### Small Saw Blades

Part No.	Description	Length	Teeth per 25mm	Blades in Pack
SJ-71/132R	Junior Blades - Metal	150mm	32	10
SJ-71/114R	Junior Blades - Wood	150mm	14	10
SJ-71/CP7R	Coping Saw Blades	165mm	14	10
SJ-71/FS5R	Fretsaw Blades	125mm	18	10
EC-PS32	Piercing Saw Blades	125mm	32	100
SJ-73/66SR	Gen Purpose Saw Spare Blade	375mm	10	1



## Bolt & Wire Cutting Range

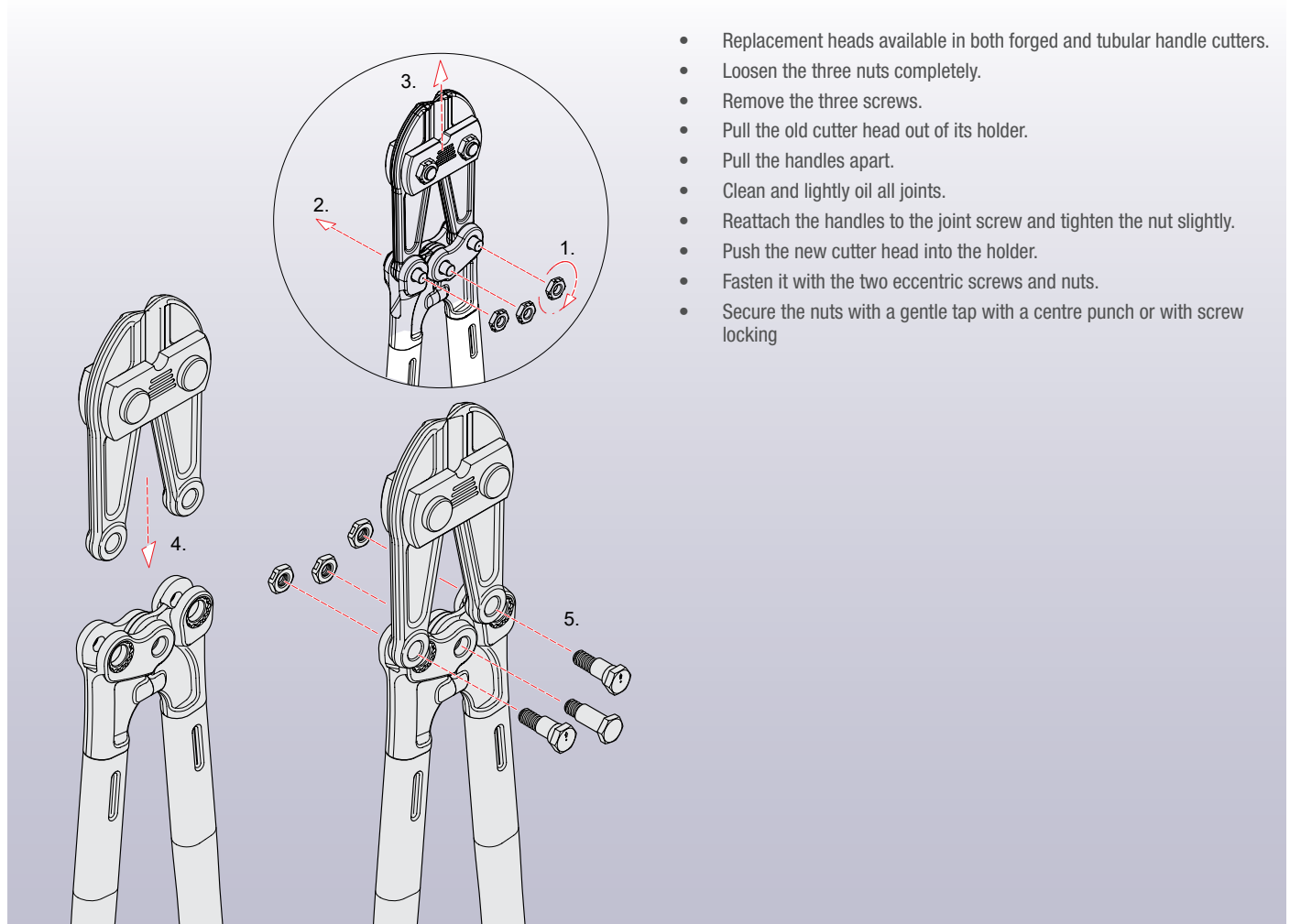
Eclipse features a range of specialist cutters for the manual cutting of bolts, wire & cables.



# Cutting Bolt Cutters

Highly suitable for cutting high tensile steel rods, bolts, pre-stressed concrete, reinforcing rods, mesh and wire, cold drawn alloy steel, case hardened chain, tempered spring wire.

## Changing the Cutter Head

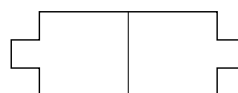


## Cut Styles



### Centre Cut

Centre-cut bolt cutters are versatile and often used for a variety of tasks. The double bevel on each blade ensures that the whole weight of the blade is applied to the material being cut from all directions, making clean cuts on all sides. They work wonderfully for most jobs, such as sawing through thick wires and pipes.



### End Cut

The blades of an end cut jaw are flattened and curved inward at the tip to form a pincer. When materials like bolt heads are located in tight, inaccessible spaces, these tools are utilised to secure a firm grasp before cutting them off with a clean, precise cut.

High tensile Bolt Cutters, available in a range of sizes, with a choice of tubular or solid forged handles.

### Bolt Cutters - High Tensile, Tubular Handles

High tensile - for cutting hard materials up to 50HRC. Centre cut, arm adjusted bolt cutters with lightweight tubular handles that do not compromise strength.

- Every pound of force applied is amplified to produce 36kg of force between the jaws.
- To maximise safety the built in stops will yield rather than break
- Drop forged jaws are machined to precise specifications for a resilient body and rigid cutting edge



Part No.	Total Length	Max Cutting Capacity	Pack Qty
EC-ETBC14	355mm	5mm	20
EC-ETBC18	460mm	6.4mm	10
EC-ETBC24	610mm	7.9mm	8
EC-ETBC30	762mm	9.5mm	5
EC-ETBC36	915mm	11.1mm	4

### Spare Jaw and Strap Set

Part No.	Description	Availability
EC-ETBC14RH2	Spare Jaw and Strap Set	ALL SIZES SPECIAL ORDER ONLY
EC-ETBC18RH2	Spare Jaw and Strap Set	
EC-ETBC24RH2	Spare Jaw and Strap Set	
EC-ETBC30RH2	Spare Jaw and Strap Set	
EC-ETBC36RH2	Spare Jaw and Strap Set	

### Bolt Cutters - High Tensile, Forged Handles

High tensile - for cutting hard materials up to 50HRC. Centre cut, arm adjusted bolt cutters with solid forged handles for maximum strength.

- Every pound of force applied is amplified to produce 36kg of force between the jaws.
- To maximise safety the built in stops will yield rather than break
- Drop forged jaws are machined to precise specifications for a resilient body and rigid cutting edge.



Part No.	Total Length	Max Cutting Capacity	Pack Qty
EC-EFBC14	355mm	5mm	16
EC-EFBC18	460mm	6.4mm	8
EC-EFBC24	610mm	7.9mm	6
EC-EFBC30	762mm	9.5mm	4
EC-EFBC36	915mm	11.1mm	3
EC-EFBC42	1070mm	13mm	2

### Spare Jaw and Strap Set

Part No.	Description	Availability
EC-EFBC14-RH	Spare Jaw and Strap Set	ALL SIZES SPECIAL ORDER ONLY
EC-EFBC18-RH	Spare Jaw and Strap Set	
EC-EFBC24-RH	Spare Jaw and Strap Set	
EC-EFBC30-RH	Spare Jaw and Strap Set	
EC-EFBC36-RH	Spare Jaw and Strap Set	
EC-EFBC42-RH	Spare Jaw and Strap Set	

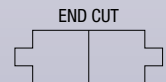
# Cutting Bolt Cutters

Specialist cutters for shearing bolt heads and cutting wire, rope and cable.

## EC-EBCEC24 End Cut Bolt Cutter - 600mm

Pincer movement makes the bolt cutter ideal for cutting in restricted areas or where a side cut is difficult e.g.. when cutting off bolt heads.

- Jaws are drop forged and machined to precise specifications for a resilient body and rigid cutting edge.
- Handles are solid forged and incorporate safety stops that will yield rather than break.



Part No.	Total Length	Max Cutting Capacity	Pack Qty
EC-EBCEC24	600mm	7.9mm	4

## EC-EWC8 Wire & Rope Cutter - 200mm

Suitable for a multitude of agricultural, garden, automotive and marine cutting tasks.

- Angled and hardened blades ensure a clean cut
- Spring loaded head gives a fast, smooth cutting action.
- Rubber handles reduce the risk of slippage.

Material	Recommended Capacity
Mild steel strand	6.5mm
High tensile steel rope (180kg/mm <sup>2</sup> )	5.0mm
Soft steel wire (34kg/mm <sup>2</sup> )	5.0mm
Copper/aluminium rod	5.0mm
Steel rod (66kg/mm <sup>2</sup> )	4.0mm
Spring wire (hardened and tempered) (180kg/mm <sup>2</sup> )	2.5mm
Electric cable (not armoured)	6.5mm

Part No.	Total Length	Pack Qty
EC-EWC8	200mm	5



## Aviation Snips Range

Aviation snips have 2 pivot points, meaning that they require less force to maintain a clean cut. Instead of long, clean cuts, aviation snips are chosen for more specialized tasks copper, silver and gold.

# Cutting Aviation Snips

Cuts up to 1.2mm cold rolled steel and 0.7mm stainless steel. Drop forged alloy steel blades give a longer cutting life, whilst the spring loaded handles ensure a fast, smooth cutting action.

## EC-EAS-SL Aviation Snips

Long cut/straight cut and wide curves Aviation Snips



Part No.	Cutting Capacity (Cold Rolled Steel)	Cutting Capacity (Stainless Steel)	Pack Qty
EC-EAS-SL	1.22mm	0.7mm	6

## EC-EAS-S Aviation Snips

Straight and wide curves Aviation Snips



Part No.	Cutting Capacity (Cold Rolled Steel)	Cutting Capacity (Stainless Steel)	Pack Qty
EC-EAS-S	1.22mm	0.7mm	6

## EC-EAS-R Aviation Snips

Right and straight cut Aviation Snips



Part No.	Cutting Capacity (Cold Rolled Steel)	Cutting Capacity (Stainless Steel)	Pack Qty
EC-EAS-R	1.22mm	0.7mm	6

## EC-EAS-L Aviation Snips

Left and straight cut Aviation Snips



Part No.	Cutting Capacity (Cold Rolled Steel)	Cutting Capacity (Stainless Steel)	Pack Qty
EC-EAS-L	1.22mm	0.7mm	6

## Snips Range

Resharpenable General Purpose Snips, precision hollow ground for easy cutting of sheet metal.



# Cutting

## General Purpose & Jewellers' Snips

**Resharpenable General Purpose Snips**, precision hollow ground for easy cutting of sheet metal.  
**Jewellers Snips** suitable for cutting copper, silver and gold.

### EC-ESGPS General Purpose Snips with Spring

**For cutting sheet metal.**

- Spring handle for ease of use during repetitive cutting.
- Precision hollow ground blades reduce friction for an easy cutting action.
- Induction hardened and tempered, they can be easily re-sharpened.
- The leather strap ensures safe storage.



Part No.	Total Length	Cutting Capacity (Mild Steel up to 18g)	Cutting Capacity (Stainless Steel up to 23g)	Pack Qty
EC-ESGPS8	200mm	0.8mm	0.46mm	6
EC-ESGPS10	250mm	1mm	0.46mm	6
EC-ESGPS12	300mm	1.2mm	0.46mm	6
EC-ESGPS14	355mm	1.4mm	1.2mm	6

### EC-ESJ7C Jewellers' Snips

**For cutting copper, silver and gold.**

- Precision hollow ground blades reduce friction for an easy cutting action.
- Easily resharpened because they are induction hardened and tempered.
- Integrated stops prevent trapped fingers without compromising the jaw capacity.



Part No.	Total Length	Cutting Capacity (Mild Steel up to 18g)	Cutting Capacity (Stainless Steel up to 23g)	Pack Qty
EC-ESJ7C	180mm Curved Blade	0.8mm	0.46mm	6

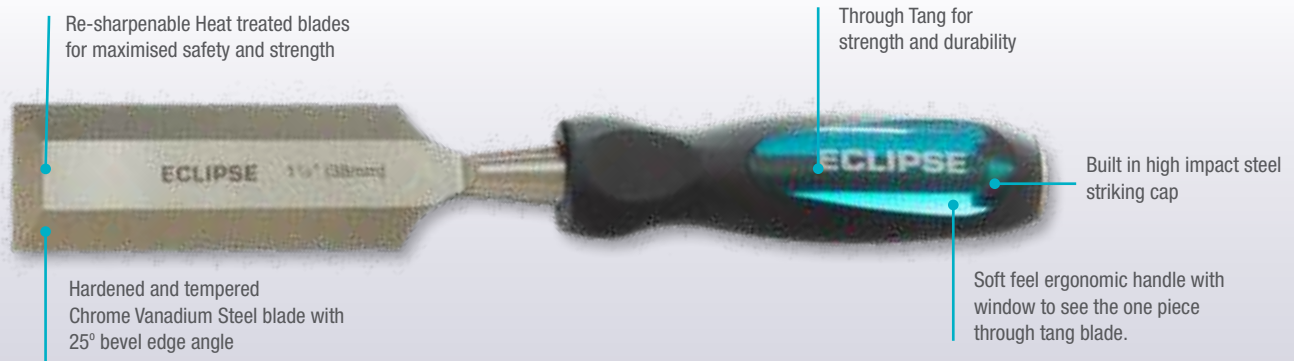
## Eclipse Wood Chisels

The blades of the ECLIPSE range of wood chisels are made from one piece of chrome vanadium steel for maximum strength. The heat treated blades, which are sharpened and ready for use, can be re-sharpened up to a depth of 25mm for a longer working life.

# Woodworking

## Wood Chisels

### High Impact Through Tang Wood Chisels



Part No.	Blade Width	Pack Qty.
EC-TT-BEWC1/4E	6mm Bevel Edge	5
EC-TT-BEWC3/8E	9mm Bevel Edge	5
EC-TT-BEWC1/2E	12mm Bevel Edge	5
EC-TT-BEWC5/8E	15mm Bevel Edge	5
EC-TT-BEWC3/4E	19mm Bevel Edge	5
EC-TT-BEWC1E	25mm Bevel Edge	5
EC-TT-BEWC11/4E	32mm Bevel Edge	5
EC-TT-BEWC11/2E	38mm Bevel Edge	5
EC-TT-BEWC2E	50mm Bevel Edge	5
EC-TT-BEWC6BCE	6pc Set (6,9,12, 19, 25, 32mm)	5



### Wood Chisels

- Soft feel ergonomic handle
- Re-sharpenable Heat treated blades for maximised safety and strength
- Chrome vanadium steel
- Built in striking cap

Part No.	Blade Width	Pack Qty.
EC-BEWC1/4E	6mm Bevel Edge	5
EC-BEWC3/8E	9mm Bevel Edge	5
EC-BEWC1/2E	12mm Bevel Edge	5
EC-BEWC5/8E	15mm Bevel Edge	5
EC-BEWC3/4E	19mm Bevel Edge	5
EC-BEWC1E	25mm Bevel Edge	5
EC-BEWC11/4E	32mm Bevel Edge	5
EC-BEWC11/2E	38mm Bevel Edge	5
EC-BEWC2E	50mm Bevel Edge	5
EC-BEWC6BCE	6pc Set (6,9,12, 19, 25, 32mm)	5



## Socketry Sets

Eclipse Socketry Sets are engineered for precision and durability, perfect for professionals and DIY enthusiasts. These sets include a variety of socket sizes and types, crafted from high-quality materials to handle diverse tasks with ease. With their reliable performance and user-friendly features, Eclipse's new socketry sets are a valuable addition to any tool kit.

# Drivers & Socketry

## Sockets

### EC-ERH Square Drive Ratchet Handles

Our Ratchet Handles have 72 teeth (72T) on the drive gear, so the handle needs to move just 5° to engage the next tooth for easy, rapid adjustments with maximum torque and minimal effort. The 72T mechanism allows adjustments to be made in tight spaces where a larger swing arc might not work.

- Available in 3 drive sizes: 1/4", 3/8" and 1/2"
- Made from Chrome Vanadium Steel for strength and durability
- A quick release button on the ratchet head allows for speedy removal of the socket or accessory
- Ergonomic soft-feel handles are comfortable to hold and easy to wipe clean



Part No.	Description	Pack Qty.
EC-ERH14	1/4" Square Drive Ratchet Handle	10
EC-ERH38	3/8" Square Drive Ratchet Handle	5
EC-ERH12	1/2" Square Drive Ratchet Handle	5

## EC-ESS25PS 1/4" Square Drive 25 Piece Socket

- 50 teeth / 8° increment ratchet
- Chrome Vanadium Steel sockets are strong and durable, with six-point hex to reduce any slippage or rounding over corners
- Quick release feature for quickly removing sockets or accessories
- Ergonomic soft feel handles for increased comfort during use



### Set Contents:

- 12 x Sockets: 4 - 13mm
- 1 x 50T Ratchet Handle
- 1 x 100mm Extension Bar
- 1 x Bit Holder (Adaptor)
- 10 x 25mm Bits:
  - TX 10, 15, 20, 25, 30, 40
  - PH2 x 2, Hex 5, 6



Part No.	Description	Pack Qty.
EC-ESS25PS	1/4" Square Drive 25 Piece Socket Set	10

## EC-ESS34PS 1/4" & 3/8" Square Drive 34 Piece Metric Socket Set

- 72 teeth / 5° increment ratchets for smooth operation
- Chrome Vanadium Steel sockets are strong and durable, with six-point hex to reduce any slippage or rounding over corners
- Quick release feature for quickly removing sockets or accessories
- Ergonomic soft feel handles for increased comfort during use



### Set Contents:

- 12 x 3/8" Sockets: 10 - 22mm
- 1 x 3/8" 72T Ratchet Handle
- 1 x 3/8" 75mm Extension Bar
- 1 x 3/8" 150mm Extension Bar
- 1 x 3/8" Universal Joint
- 1 x 3/8" 16mm Spark Plug Socket
- 1 x 3/8" 21mm Spark Plug Socket
- 1 x 1/4" Spinner Handle
- 1 x 1/4" x 1/4" Bit Holder (Adaptor)
- 1 x 3/8" x 1/4" Bit Holder (Adaptor)
- 13 x 1/4" Bits: FD 4, 5.5, 7, PH1, PH2, PH3, PH4, Hex 3, 4, 5, 6, 7, 8



Part No.	Description	Pack Qty.
EC-ESS34PS	1/4" & 3/8" Square Drive 34 Piece Metric Socket Set	5

# Driver Bits & Socketry

## Socket Sets

### EC-ESS24PS

#### 1/2" Square Drive 24 Piece Socket Set - Imperial

- 72 teeth / 5° increment ratchets for smooth operation
- Chrome Vanadium Steel sockets are strong & durable, with six-point hex to reduce any slippage or rounding over corners
- Quick release feature for quickly removing sockets or accessories
- Ergonomic soft feel handles for increased comfort during use



##### Set Contents:

- 15 x 1/2" Sockets: 3/8" - 1 1/4"
- 1 x 1/2" 5" Extension Bar
- 1 x 1/2" 10" Extension Bar
- 1 x 1/2" - 5/8" Spark Plug Socket
- 1 x 1/2" - 13/16" Spark Plug Socket
- 1 x 1/2" 72T Ratchet Handle
- 1 x 1/2" 3 Way Adaptor
- 1 x 1/2" Universal Joint
- 1 x 1/2" 250mm F Handle
- 1 x Empty Plastic Box

Part No.	Description	Pack Qty.
EC-ESS24PS	1/2" Square Drive 24 Piece Imperial Socket Set	5

### EC-ESS24PSM

#### 1/2" Square Drive 24 Piece Socket Set - Metric

- 72 teeth / 5° increment ratchets for smooth operation
- Chrome Vanadium Steel sockets are strong & durable, with six-point hex to reduce any slippage or rounding over corners
- Quick release feature for quickly removing sockets or accessories
- Ergonomic soft feel handles for increased comfort during use



##### Set Contents:

- 15 x 1/2" Sockets: 10 - 32mm
- 1 x 1/2" 5" Extension Bar
- 1 x 1/2" 10" Extension Bar
- 1 x 1/2" - 5/8" Spark Plug Socket
- 1 x 1/2" - 13/16" Spark Plug Socket
- 1 x 1/2" 72T Ratchet Handle
- 1 x 1/2" 3 Way Adaptor
- 1 x 1/2" Universal Joint
- 1 x 1/2" 250mm F Handle
- 1 x Empty Plastic Box

Part No.	Description	Pack Qty.
EC-ESS24PSM	1/2" Square Drive 24 Piece Metric Socket Set	5

## EC-ERSMS65PS 65 Piece Ratchet Screwdriver & Mini Socket Set

- Ideal for everyday maintenance & light duty repairs
- Handle can be locked in position for both left and right ratchet action
- Contains a range of 61 popular sockets & screwdriver bits
- Bits are hardened & tempered for enhanced strength & durability
- Supplied in a sturdy storage case to keep individual pieces organised & secure



### Set Contents:

- 1 x Ratchet Screwdriver Handle
- 1 x Precision Magnetic Holder
- 2 x Long Connectors for Ratchet & Precision Drivers
- 9 x 25mm (1/4") Sockets: 4 - 12mm
- 4 x Connector bits
- 8 x Slotted bits: 3mm, 4mm, 2 x 5mm, 2 x 6mm, 2 x 7mm
- 8 x PH bits: PH0, 3 x PH1, 3 x PH2, PH3
- 4 x PZ bits: PZ0, PZ1, PZ2, PZ3
- 5 x T bits: T10, T15, T20, T25, T30
- 2 x S bits: S0, S1
- 19 x Precision bits: 1mm, 1.5mm, 2mm, 2.5mm, 2 x PH0, 2 x PH00, 2 x PH1, T4, 2 x T5, T6, T8, T9, H2, H2.5, H3

Part No.	Description	Pack Qty.
EC-ERSMS65PS	65 Piece Ratchet Screwdriver & Mini Socket Set	6

## EC-EMS78PS 78 Piece Mini Socket and Insert Bit Set

A handy set suitable for everyday DIY, light duty car repairs and bike repairs.

- Reversible Ratchet Handle
- Magnetised Bit Driver and Extension Piece
- All bits are hardened & tempered for strength & durability
- Torque to British Standard BS: 2559 1994

### Set Contents:

- 1 x 1/4" Square Drive
- 1 x Bits Driver
- 1 x Extension Bar
- 1 x Magnetic Holder
- 1 x Precision Magnetic Holder
- 1 x Tweezer
- 41 x Bits (6.35 x 25mm)
- 1 x ADP (25mm)
- 1 x Precision Bits ADP
- 20 x Precision Bits (4 x 28mm)
- 9 x 1/4" Socket: 4mm - 12mm



Part No.	Description	Pack Qty.
EC-EMS78PS	78 Piece Mini Socket and Insert Bit Set	12

# Drivers & Socketry

## Socket & Driver Sets

### EC-ETGRS53PS

#### 53 Piece T-Grip Ratchet Screwdriver & Mini Socket Set

- Ideal for everyday maintenance & light duty repairs
- Comfortable T-Grip handle for ease-of-use
- Contains a range of 48 popular sockets & screwdriver bits
- Bits are hardened & tempered for enhanced strength & durability
- Supplied in a sturdy storage case to keep individual pieces organised & secure

##### Set Contents:

- 1 x T-Grip Ratchet Screwdriver Handle
- 1 x Precision Magnetic Holder
- 1 x Flexible Spring Tube
- 1 x Extended Bit Holder
- 1 x Adaptor
- 6 x 25mm (1/4") Sockets: 4-9mm
- 4 x Slotted bits: 3mm, 4mm, 5mm, 6mm
- 4 x PH bits: PH0, PH1, PH2, PH3
- 4 x PZ bits: PZ0, PZ1, PZ2, PZ3
- 7 x T bits: T10, T15, T20, T25, T27, T30, T40
- 5 x H bits: H3, H4, H5, H6
- 18 x Precision bits: 1mm, 1.5mm, 2mm, 2.5mm, 3.5mm, 2 x PH00, T4, T5, T6, T7, T8, T9, H0.7, H0.9, H1.3, H1.5, H2.5



Part No.	Description	Pack Qty.
EC-ETGRS53PS	1/2" Square Drive 24 Piece Metric Socket Set	5

### EC-ERS33PS

#### 33 Piece Ratchet Screwdriver Set

- Adjustable ratchet handle can be set at any angle, ideal for working in awkward or hard-to-reach places
- Contains a range of 32 popular screwdriver bits, perfect for everyday use
- Bits are hardened & tempered for enhanced strength & durability
- Supplied in a sturdy hanging case to keep individual pieces organised & secure



##### Set Contents:

- 1 x Ratchet Screwdriver Handle
- 6 x Slotted bits: 3mm, 2 x 4mm, 2 x 5mm, 6mm
- 6 x PH bits: PH0, 2 x PH1, 2 x PH2, PH3
- 4 x PZ bits: PZ0, PZ1, PZ2, PZ3
- 8 x T bits: T10, T15, 2 x T20, 2 x T25, T27, T30
- 4 x H bits: H3, H4, H5, H6
- 4 x S bits: S0, S1, S2, S3



Part No.	Description	Pack Qty.
EC-ERS33PS	33 Piece Ratchet Screwdriver Set	6

## Screwdriver & Hex Key Sets

Eclipse Screwdrivers & Hex Keys are designed for precision and durability, ideal for both professionals and DIY enthusiasts.

The screwdriver sets feature various tip types and sizes, crafted from high-quality materials to handle a wide range of tasks.

The hex keys are color-coded for easy identification and come in three types, offering enhanced versatility.

# Drivers & Socketry

## Screwdriver Sets

### EC-ESDXPS Screwdriver Sets

Toolbox essential screwdrivers in sets of 5 and 8 of the most commonly used sizes and types of screwdriver.

- Chrome Vanadium steel blades for strength and durability
- Magnetised tips for greater convenience
- Manganese Phosphate coating for added rust protection
- Ergonomic trilobular soft feel handles for user comfort & greater torque when turning the screw
- Torques to British standard: BS 2559:1994



Part No.	Set	Contains	Pack
EC-ESD5PS	5 Pieces	75 x 3mm Slotted Parallel 100 x 5mm Slotted Flared 125 x 6mm Slotted Flared 100 x PH2 N°2 Phillips 100 x PZ2 N°2 Pozidriv	5
EC-ESD8PS	8 Pieces	75 x 3mm Slotted Parallel 100 x 5mm Slotted Flared 125 x 6mm Slotted Flared 150 x 8mm Slotted Flared 100 x PH1 N°1 Phillips 125 x PH1 N°2 Phillips 100 x PZ1 N°1 Pozidriv 125 x PZ2 N°2 Pozidriv	5



# Drivers & Socketry

## Hex Keys

Hex Keys, also known as Allen keys, are simple tools used to drive bolts and screws with hexagonal sockets in their heads. The Eclipse Hex Key range features easily identifiable colour-coded keys, ball-ended for ease of use in awkward positions.

### EC-EHK9PS

#### 9 Piece Colour-Coded Hex Key Set

- Great for blind and hard to reach areas, or if the screw is obstructed on one side
- 1.5mm to 10mm sizes
- Made from Chrome Vanadium Steel for strength and durability
- Colour-coded for easy identification
- Ball-end heads for quicker and easier use when working at an angle
- Handy, durable storage case for safe keeping



Part No.	Description	Pack Qty.
EC-EHK9PS	9 Piece Colour-Coded Hex Key Set	5

### EC-EHK9PS-L

#### 9 Piece Colour-Coded Extra Long Hex Key Set

This set features extra-long keys for enhanced reach when working in hard to access spaces. On average, each extra-long hex key is approximately 20% longer than a standard hex key.

- 1.5mm to 10mm sizes
- Extra-long keys for enhanced reach
- Colour coded for easy identification
- Chrome vanadium steel for strength and durability
- Ball end keys allow for a 20° incline in angle for use in awkward positions
- Handy durable storage case for safe keeping



Part No.	Description	Pack Qty.
EC-EHK9PS-L	9 Piece Colour-coded Extra Long Hex Key Set	5

## Gripping & Plumbing

We offer a wide range of gripping and plumbing tools manufactured from the highest quality materials offering a complete solution for the plumbing, installation and automotive industries

# Gripping & Plumbing Tools



## Pipe & Adjustable Wrenches

Wrenches manufactured from the highest quality materials to the finest tolerances for optimum performance. A complete solution for the plumbing, installation and automotive industries.

# Gripping & Plumbing Tools

## Pipe Wrenches

Eclipse offers a range of high quality pipe vices for repetitive clamping tasks...

### EC-EQAPW12 Quick Adjustment Pipe Wrench

This latest addition to the Eclipse range of Wrenches, is designed to offer the convenience of a traditional pipe wrench with the added benefit of quick and easy one-handed adjustment, in a compact size suitable for use in more confined spaces

- High quality construction; cast aluminium slide and handle with forged carbon steel head
- Compact size 300mm, suitable for use in more confined spaces
- Deep-grooved jaws for instant grip and a firm ratcheting action
- Hardened teeth



Size	Max Opening Mid Jaw	Box Qty.
EC-EQAPW12	79mm	4

### EC-ELPW Leader Pattern Pipe Wrenches

The frame and handle are made from a one piece ductile iron casting which is guaranteed unbreakable, whilst the flash hardened teeth increase wear resistance.

The hardened and tempered steel adjustment nut gives a longer working life and the precision machined screw thread and spring jaw remain open until pressure is applied. Conforms to British Standard BS3594.



Size	Open Length	Pipe Capacity	Box Qty.
EC-ELPW8	200mm	25mm	4
EC-ELPW10	250mm	38mm	4
EC-ELPW12	300mm	51mm	4
EC-ELPW14	350mm	51mm	4
EC-ELPW18	450mm	63mm	4
EC-ELPW24	600mm	76mm	1
EC-ELPW36	910mm	127mm	1
EC -ELPW48	1200mm	152mm	1

A wide range of Pipe Wrenches to suit the majority of applications and user preferences.

### EC-EAPW Leader Pattern Aluminium Pipe Wrenches

Ideal for manipulating large capacity threaded pipe joints and tightening or loosening threaded collars on pipe work, nuts & bolt.

- Frame and handle are made from a one piece lightweight aluminium casting
- Flash hardened teeth increase wear resistance.
- Hardened and tempered steel adjustment nut gives a longer working life
- Precision machined screw thread and spring jaw remain open until pressure is applied.

Size	Open Length	Pipe Capacity	Box Qty.
EC-EPW10	250mm	38mm	4
EC-EAPW12	300mm	51mm	4
EC-EAPW14	350mm	51mm	4
EC-EAPW18	450mm	63mm	4
EC-EAPW24	600mm	76mm	1
EC-EAPW36	910mm	127mm	1

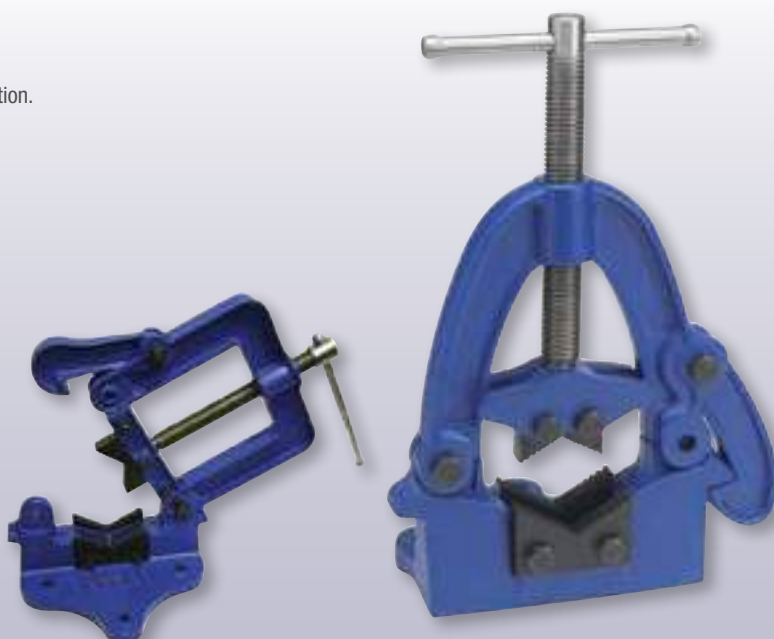


### EC-EHPV Hinged Pipe Vices

Ideal for repetitive clamping tasks on pipework.

- Can be fitted to a bench or a stand.
- Hinged top section allows rapid access to the job,
- Self locking frame is reversible for right or left-handed operation.
- Steel tommy bar
- Main screw exert and maintain a powerful gripping force
- SG ductile iron frame is guaranteed unbreakable.

Part No.	Open Length	Box Qty.
EC-EHPV2	10-50mm	4
EC-EHPV2-1/2	10-60mm	4
EC-EHPV3-1/2	10-90mm	2
EC-EHPV6	16-150mm	1



# Gripping & Plumbing Tools

## Adjustable Wrenches

A choice of Adjustable Wrenches for a variety of applications, manufactured to the highest standards and quality.

### EC-ADJW Adjustable Wrenches - Extra Wide Jaws

Ideal for use in plumbing, installation, hydraulic maintenance, HVAC applications and automotive tasks.

- Extra wide jaw opening increase versatility
- Super thin head means that the wrench can be used in confined spaces. I
- Throat depth is deeper than standard adjustable wrenches
- Head is angled to offer maximum speed and efficiency
- Soft grip handle for added comfort



Size	Length	Jaw Width	Pack Qty.
EC-ADJW6WJ	150mm	34mm	6
EC-ADJW8WJ	200mm	38mm	6
EC-ADJW10WJ	250mm	50mm	5
EC-ADJW12WJ	300mm	60mm	5

### EC-TGTW Tri Grip Wrenches - Shaped Handle

Ideal for use in plumbing, installation and automotive tasks.

- Tri-grip technology grips the bolt on THREE sides providing 50% more contact to the bolt than a standard wrench which grip bolt on only 2 faces.



Size	Length	Jaw Width	Pack Qty.
EC-TGTW8	200mm	33mm	5
EC-TGTW10	250mm	43mm	5

### EC-ADJW Adjustable Wrenches - Standard Handle

Can be used to tighten large nuts and bolts, whilst the metric scale laser etched onto the jaw ensures fast setting of the tool.

- Rust resistant lacquer increases the product life.
- Features a ring spanner in handle\*, ideal for use in difficult to reach areas
- Chrome vanadium steel with corrosion resistant finish



Size	Length	Jaw Width	Ring Spanner Size	Pack Qty.
EC-ADJW6S	150mm	27mm	10mm	5
EC-ADJW8S	200mm	33mm	11mm	5
EC-ADJW10S	250mm	38mm	13mm	5
EC-ADJW12S	300mm	45mm	14mm	5
EC-ADJW15S	375mm	49mm	Not Included	2

\*ring spanner not included on ADJW15S

## Locking Jaw Pliers and C-Clamps

A range of top quality Locking Pliers and Locking C-Clamps for the professional user.



# Gripping & Plumbing Tools

## Locking Pliers & C-Clamps



### Locking Pliers - Typical Applications

Part No.	HVAC	Welding	Plumbing	Automotive	Electrical	Woodworking
EC-E7R EC-E10R	Clamping, crimping	Clamping flat, square & hex surfaces	Non slip pipe wrench, portable vice, twisting wire	Clamping, removing bolts	Portable vice, twisting wire	Portable vice, pulling out nails
EC-E7XJ EC-E10XJ	High clamping force clamp, crimping	High clamping force clamp round surfaces	Non slip pipe wrench, portable vice, twisting wire	High clamping force clamping, removing bolts	High clamping force portable vice, screwdriver lever	High clamping force portable vice, pulling out nails
EC-E7CR EC-E10CR	Clamping, crimping	Clamping round surfaces	Non slip pipe wrench, portable vice, twisting wire	Clamping, removing bolts	Portable vice, screwdriver lever	Portable vice, pulling out nails
EC-E7LW EC-E10LW	Wrench action for nuts and bolts	Clamping hex bar	Clamping pipes & couplings	Remove seized nuts & rusted bolts	-	-
EC-E5WR EC-E7WR EC-E10WR	Clamping, crimping, wire cutting	Clamping round surfaces	Non slip pipe wrench, portable vice, cutting & twisting wire	Clamping, removing bolts	Portable vice, screwdriver lever, cutting & twisting wire	Portable vice, pulling out nails, cutting wire
EC-E6LN EC-E9LN	Clamping, crimping, wire cutting	Clamping in difficult-to-reach spaces	Repairing faucets	Removing brake springs & clips, general clamping	Bending & cutting wire	Pulling nails & staples
EC-E6SP, EC-E11SP EC-E18SP, EC-E24SP	Clamping welding supports	Clamping welding supports	Temporary pipe hanger	Sheet metal repair work	-	Clamping long reach, delicate woodworking work pieces
EC-E6R, EC-E11R EC-E18R, EC-E24R	Clamping welding supports	Clamping welding supports	Temporary pipe hanger	Sheet metal repair work	-	Clamping long reach woodworking work pieces
EC-E8R	-	Holding sheet metal during bending, forming & crimping	-	-	-	-
EC-E9R	-	Accurately aligning round & square shaped tubing	-	-	-	-
EC-E20R	Removing components, holding awkward shapes	Removing components, holding awkward shapes	Holding awkward shapes	Removing components, holding awkward shapes	-	-
EC-E12LC	Clamping large objects	Clamping large objects	Clamping large pipes & couplings	Clamping large objects	-	-

A wide choice of Locking Pliers for different applications in a range of sizes...

### Straight Jaw Locking Pliers

Designed for use with flat, square and hex workpieces. Ideal for welding, HVAC, plumbing, automotive, electrical and woodworking projects.



Part No.	Size	Max Jaw Capacity	Box Qty.
EC-E7R	175mm	34mm	5
EC-E10R	250mm	45mm	5

### Curved Jaw Locking Pliers

Designed for gripping and clamping round surfaces.



Part No.	Size	Max Jaw Capacity	Box Qty.
EC-E7CR	175mm	34mm	5
EC-10CR	250mm	45mm	5

### Curved Jaw Locking Pliers with Wire Cutters

Designed for gripping and clamping round surfaces. Incorporates a wire cutter.



Part No.	Size	Max Jaw Capacity	Box Qty.
EC-E5WR	125mm	32mm	5
EC-E7WR	175mm	34mm	5
EC-E10WR	250mm	45mm	5

### Predator Xtreme Curved Jaw Locking Pliers

**PREDATOR**  
**XTREME**

Designed for gripping and clamping round surfaces. Dual plane lower jaw action creates vastly superior gripping power.



Part No.	Size	Max Jaw Capacity	Box Qty.
EC-E7XJ	175mm	38mm	5
EC-E10XJ	250mm	45mm	5

### Large Jaw Locking Pliers

Designed for tightening, clamping & turning large objects.



Part No.	Size	Max Jaw Capacity	Box Qty.
EC-E12LC	300mm	96mm	5

# Gripping & Plumbing Tools

## Locking Pliers

Body and jaws on all locking pliers made from high grade chrome molybdenum steel...

### Long Nose Locking Pliers With Wire Cutters

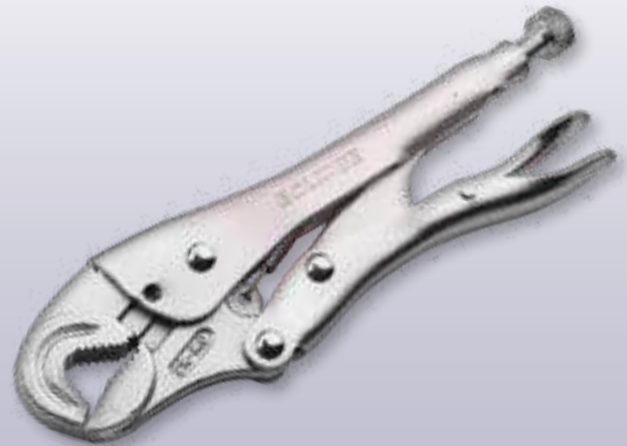
Particularly suited for clamping and tightening bolts in confined spaces. Also ideal for precision work. Incorporates a wire cutter.



Part No.	Size	Max Jaw Capacity	Box Qty.
EC-E6LN	150mm	42mm	5
EC-E9LN	225mm	51mm	5

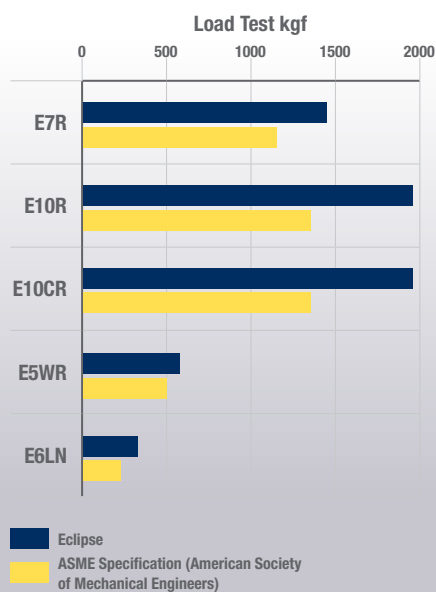
### Hex Jaw Locking Pliers

Ideal for use on square or hex section eg. nuts, bolts etc



Part No.	Size	Max Jaw Capacity	Box Qty.
EC-E7LW	175mm	21mm	5
EC-E10LW	250mm	25mm	5

### Load Test: ASME Test Specification



Eclipse locking pliers exceed ASME load test specifications.



Guarded release trigger protects against accidental release...



### Locking Chain Clamp

Grips and holds awkward shapes up to 18"/455mm in diameter. Ideal for working with pipes in confined spaces, eg. up against a wall.



Part No.	Chain Size	Box Qty.
EC-E20R		5

### Locking Sheet Metal Tool

Grips and locks onto sheet metal when bending, forming and crimping.



Part No.	Size	Max Capacity	Box Qty.
EC-E8R	200mm	12.7mm	5

### Locking Welding Clamp

U-shaped jaws accurately align round and square shaped tubing when welding.



Part No.	Size	Max Capacity	Box Qty.
EC-E9R	225mm	44mm	5

# Gripping & Plumbing Tools

## Locking C-Clamps

C-Clamps and Locking Pliers for specialist use and working in confined spaces with awkward shapes...

### Locking C-Clamps with Regular Tips

The wide opening jaws are designed to reach around and grip awkward shapes. Provide a deep reach.



Part No.	Size	Max Jaw Capacity	Box Qty.
EC-E6R	150mm	44mm	5
EC-E11R	275mm	80mm	5
EC-E18R	460mm	160mm	5
EC-E24R	610mm	340mm	5

### Locking C-Clamps with Swivel Pads

The wide opening jaws are designed to reach around and grip awkward shapes whilst the swivel pad protect delicate workpieces from damage. Provides a deep reach.



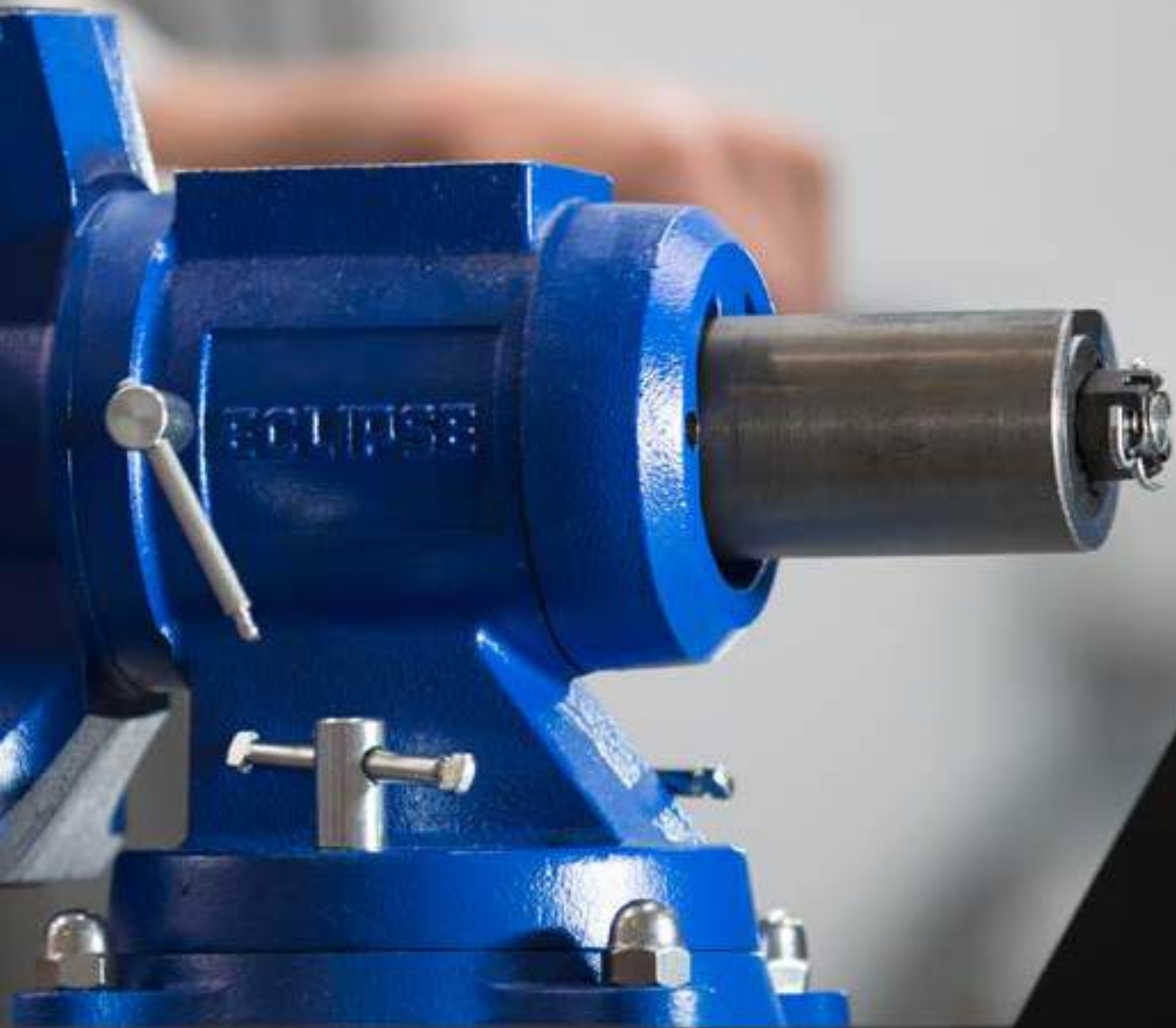
Part No.	Size	Max Jaw Capacity	Box Qty.
EC-E6SP	150mm	44mm	5
EC-E11SP	275mm	80mm	5
EC-E18SP	460mm	160mm	5
EC-E24SP	610mm	340mm	5



## Workholding Solutions

Discover a comprehensive range of top-tier workholding solutions, catering to both metal and wood working needs. From precision-engineered vices and robust clamps to versatile accessories, we empower your projects with unmatched stability and precision.

# Workholding Solutions



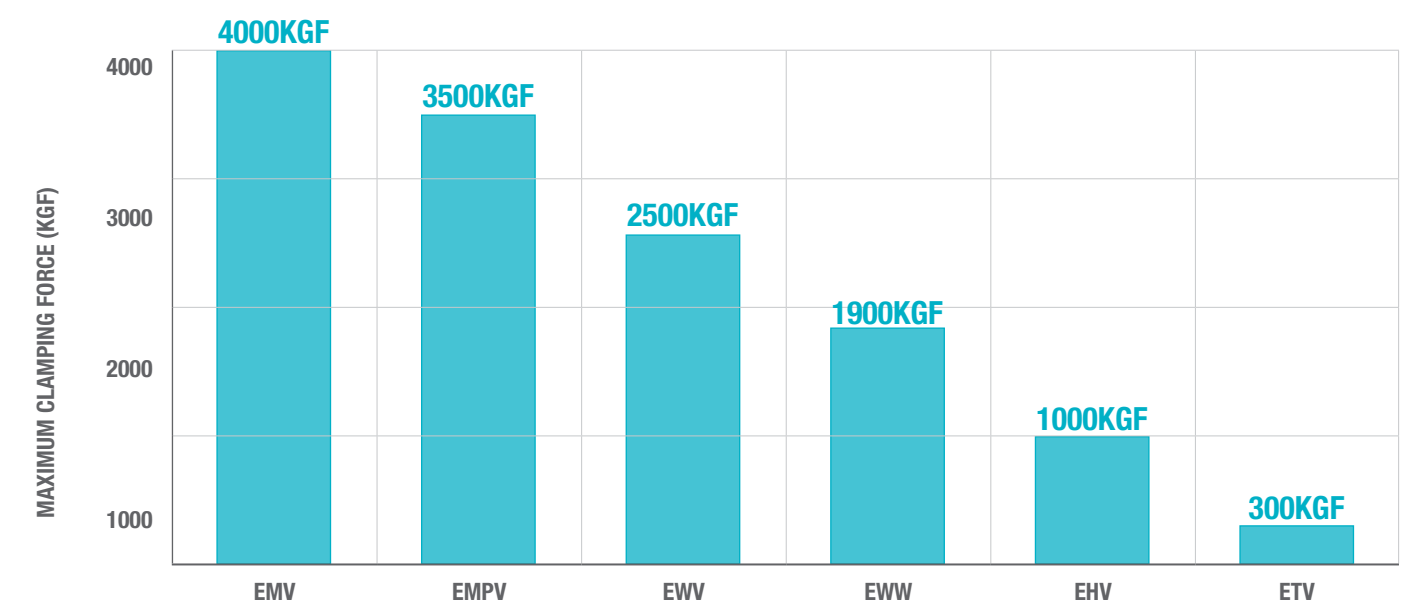
## EMV Engineer's Vices

High quality cast iron Vices capable of generating up to 4000 Kgf clamping force for general metal working applications.



Part No.	Jaw Width	Throat Depth	Opening	Clamping Force (Max)	Net Weight
EC-EMV1	75mm	48mm	82mm	1500kgf	4.8kg
EC-EMV3	100mm	63mm	109mm	2000kgf	9.3kg
EC-EMV5	125mm	73mm	136mm	2500kgf	15.8kg
EC-EMV6	150mm	86mm	168mm	3000kgf	24.2kg
EC-EMV8	200mm	103mm	208mm	4000kgf	38.1kg

## Vices - Maximum Clamping Forces



# Workholding Solutions

## Engineer's Vice

### EC-EMVSB Swivel Bases

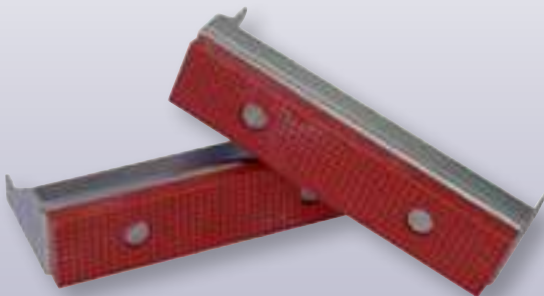
- Includes three mount holes for attaching to a workbench
- For use with Eclipse Mechanics' Vices



Part No.	Size	For use with:	Pack Qty
EC-EMV-SB1	Swivel Base for 75mm Vice	EMV-1	10
EC-EMV-SB3	Swivel Base for 100mm Vice	EMV-3	10
EC-EMV-SB5	Swivel Base for 128mm Vice	EMV-5	10
EC-EMV-SB6	Swivel Base for 150mm Vice	EMV-6	8
EC-EMV-SB8	Swivel Base for 200mm Vice	EMV-8	8

### EC-EFG Fibre Grips

- A range of high quality fibre grips for use with Eclipse Mechanics' Vices
- Prevents damage to workpieces with soft or polished surfaces
- Supplied in pairs



Part No.	Size	For use with	Pack Qty
EC-EFG3	100mm	EMV-3	10
EC-EFG5	128mm	EMV-5	10
EC-EFG6	150mm	EMV-6	10
EC-EFG8	200mm	EMV-8	10

### EC-EMV-JPS Spare Jaw plates

- Replacement hardened steel jaw plates with fine knurl grip pattern to fit EMV series vices.
- Supplied as a pair with 4 screws for easy fitting.

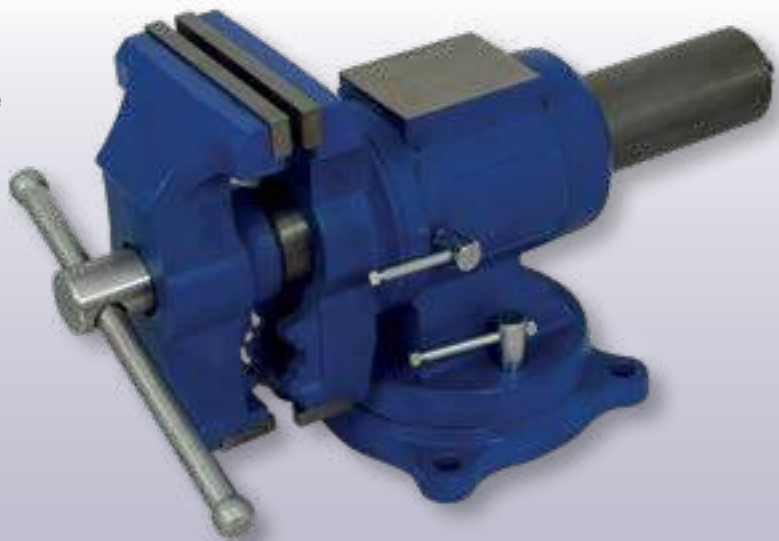


Part No.	Description
EC-EMV-1JPS	Spare jaw plates and screws for EMV-1
EC-EMV-3JPS	Spare jaw plates and screws for EMV-3
EC-EMV-5JPS	Spare jaw plates and screws for EMV-5
EC-EMV-6JPS	Spare jaw plates and screws for EMV-6
EC-EMV-8JPS	Spare jaw plates and screws for EMV-8

## EC-EMPV-5 Multi-Purpose Vice

Strong and durable precision cast iron body with hardened steel jaw plates. Up to 3500kg of clamping force is achievable for medium to heavy duty metal and wood working and pipe jaws are included for specific pipe work.

- The moving body is capable of rotating 360° and it also features a 360° swivel base for flexible working.
- It includes a convenient anvil at the rear of the body for beating and hammering workpieces.

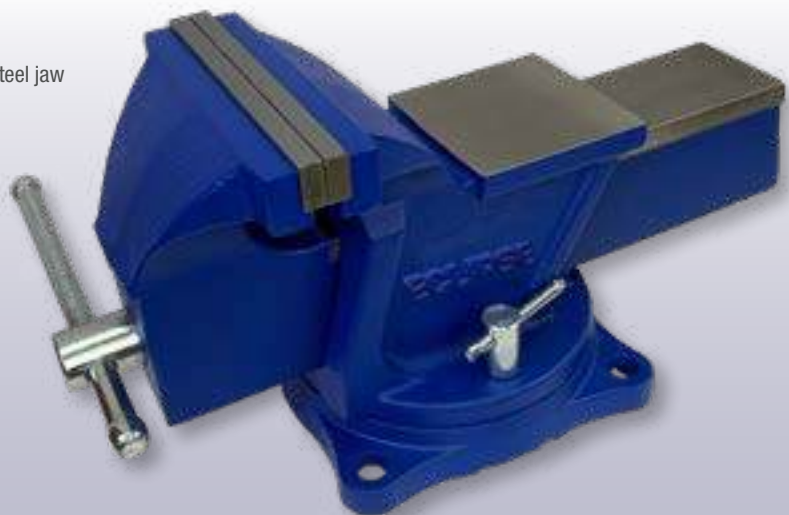


Part No.	Jaw Width	Throat Depth	Opening	Clamping Force (Max)	Net Weight
EC-EMPV-5	125mm	67mm	125mm	3500kgf	15.0kg

## EC-EWV150S Swive Base Workshop Vice

The Workshop Swivel Vice, it is ideal for general holding and workshop applications.

- Strong and durable precision cast iron body with hardened steel jaw plates. Up to 2500kg of clamping force is achievable for medium duty working.
- Features a 120° swivel base
- It includes a convenient anvil at the rear of the body for beating and hammering workpieces.



Part No.	Jaw Width	Throat Depth	Opening	Clamping Force (Max)	Net Weight
EC-EWV125S	125mm	60mm	125mm	2000kgf	9.2kg
EC-EWV150S	150mm	68mm	152mm	2500kgf	13.2kg

# Workholding Solutions

## Vices

### EC-EHV-3 Pipe Jaw Workshop Vice

Compact Cast Iron workshop vice for medium duty working with built in pipe jaws.

- Strong and durable precision cast iron body with hardened steel jaw plates. Up to 1000kg of clamping force is achievable for medium duty working and pipe jaws are included for specific pipe work.
- It includes a convenient anvil at the rear of the body for beating and hammering workpieces.



Part No.	Jaw Width	Throat Depth	Opening	Clamping Force (Max)	Net Weight
EC-EHV-3	100mm	60mm	100mm	1000Kgf	7.6kg

### EC-EWV100 Workshop Vice

The Workshop Vice, it is ideal for general holding and workshop applications.

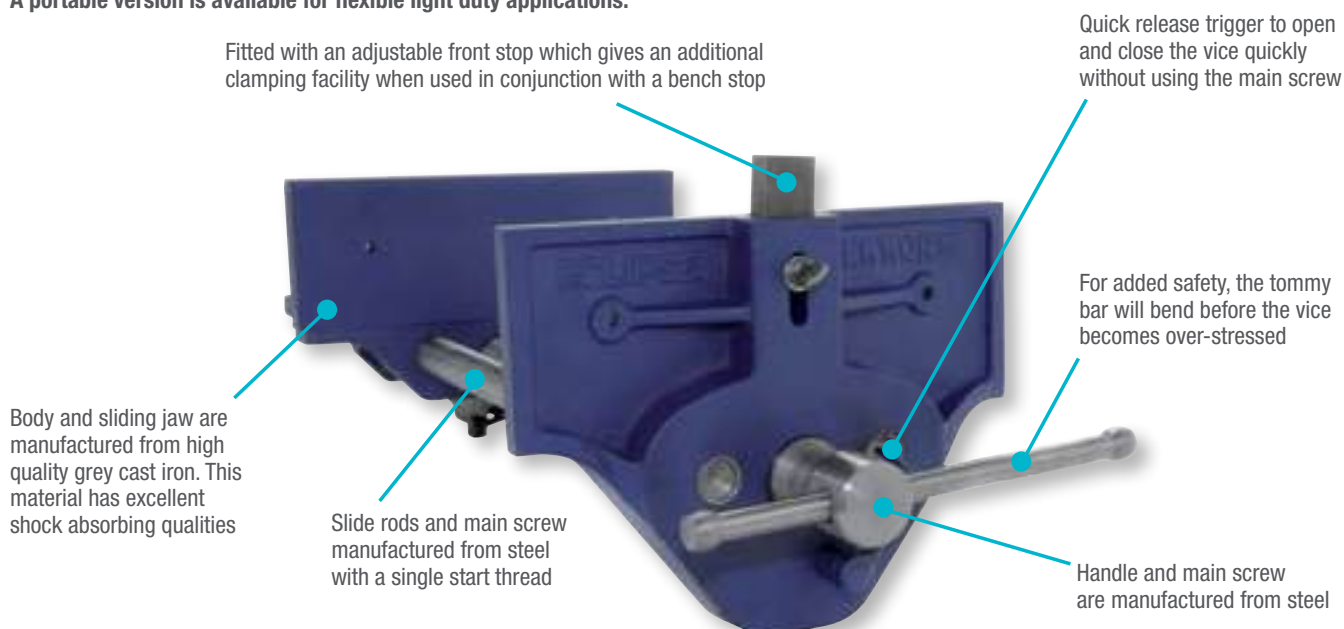
- Strong and durable precision cast iron body with hardened steel jaw plates. Up to 1000kg of clamping force is achievable for medium duty working.
- It includes a convenient anvil at the rear of the body for beating and hammering workpieces.



Part No.	Jaw Width	Throat Depth	Opening	Clamping Force (Max)	Net Weight
EC-EWV100	100mm	65mm	100mm	1000kgf	7.8kg

## EC-EWWQR Quick Release Woodworking Vices

High quality Cast Iron vices for general woodworking applications. Available in quick release and plain screw options. A portable version is available for flexible light duty applications.

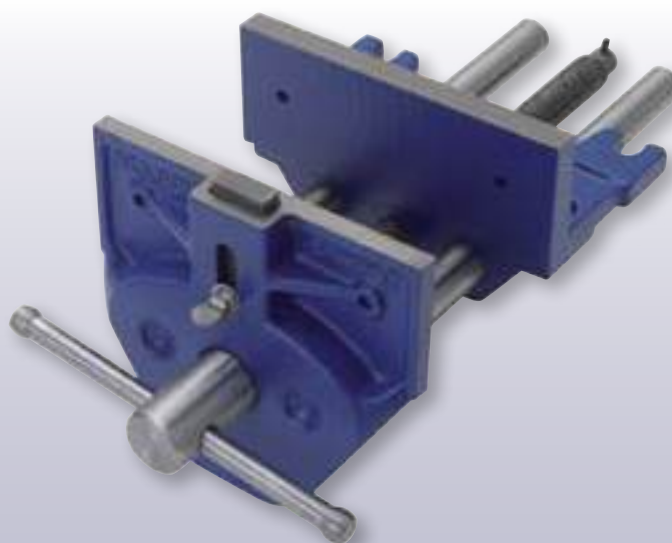


Part No.	Jaw Width	Throat Depth	Opening	Clamping Force (Max)	Net Weight
EC-EWWQR7	178mm	90mm	202mm	1900Kgf	9.4kg
EC-EWWQR9	230mm	106mm	260mm	1900Kgf	15.5kg

## EC-EWWPS7 Plain Screw Woodworking Vices

Plain screw mechanism works through a separate unbreakable nut housed beneath the body seating, to ensure the constant alignment of the screw mechanism.

- Precision machined grey cast iron body and front to ensure a smooth, parallel action. Fitted with an adjustable front stop, or dog, that gives an additional clamping facility when used with a bench stop, to provide a normal vice and a tail vice in one tool.
- To increase safety, the fused tommy bar will bend before the vice can become over-stressed.
- Up to 1900Kgf clamping force is achievable and is ideal for holding large pieces of wood for cutting and gluing



Part No.	Jaw Width	Throat Depth	Opening	Clamping Force (Max)	Net Weight
EC-EWWPS7	178mm	80mm	202mm	1900kgf	9.4kg

# Workholding Solutions

## Vices

### EC-E0V150 Offset Vice

The Offset Vice, is ideal for industrial, automotive and workshop applications.

- Strong and durable precision cast iron body with precision machined slideways.
- Long hardened steel jaw plates to allow the holding of long work pieces.
- It includes a convenient anvil at the rear of the body for beating and hammering workpieces..



Part No.	Jaw Width	Throat Depth	Opening	Clamping Force (Max)	Net Weight
EC-E0V150	150mm	N/A	200mm	2200kgf	25.0kg

### EC-EDPV-4 Drill Press Vice

Designed for use with drill presses and pillar drills, ideal for an engineering workshop or tool room.

- Manufactured from high quality grey cast iron for strength and durability with a slotted base for easy installation and positioning.



Part No.	Jaw Width	Throat Depth	Opening	Clamping Force (Max)	Net Weight
EC-EDPV-4	100mm	25mm	110mm	600kgf	3.2kg

**300KG  
CLAMPING  
FORCE**

## F Clamps

Eclipse F clamps are suitable for a wide range of medium and heavy duty wood and metal working applications.

With 2 throat sizes available, we have your clamping needs covered.

# Workholding Solutions

## F Clamps

### EC-SC80 80mm Throat Depth Screw Clamps

80mm throat depth capacity clamps, manufactured to DIN5117 standard clamps with an average clamping force of 300kg

- The sliding head quickly sets the clamp to the required capacity
- Serrated grooves on the corrosion resistant nickel plated bar prevent slippage in use
- The cast iron malleable heads offer maximum strength and the wooden handle provides a firm and comfortable grip
- Non marring plastic grips to protect workpiece
- End stop prevents sliding head from coming off bar
- 80mm throat depth



Part No.	Clamping Capacity	Pack Qty
EC-SC80R6	150mm	10
EC-SC80R8	200mm	10
EC-SC80R10	250mm	10
EC-SC80R12	300mm	10
EC-SC80R16	400mm	10
EC-SC80R24	600mm	6
EC-SC80R32	800mm	6

### EC-SCR 120mm Throat Depth Screw Clamps

DIN5117 standard clamps with an average clamping force of 300kg.

- The sliding head quickly sets the clamp to the required capacity
- Serrated grooves on the corrosion resistant nickel plated bar prevent slippage in use
- The cast iron malleable heads offer maximum strength and the wooden handle provides a firm and comfortable grip
- Non marring plastic grips to protect workpiece
- End stop prevents sliding head from coming off bar
- 120mm throat depth

Part No.	Clamping Capacity	Pack Qty
EC-SCR8	200mm	10
EC-SCR12	300mm	10
EC-SCR16	400mm	10
EC-SCR24	600mm	10
EC-SCR32	800mm	6
EC-SCR40	1000mm	6



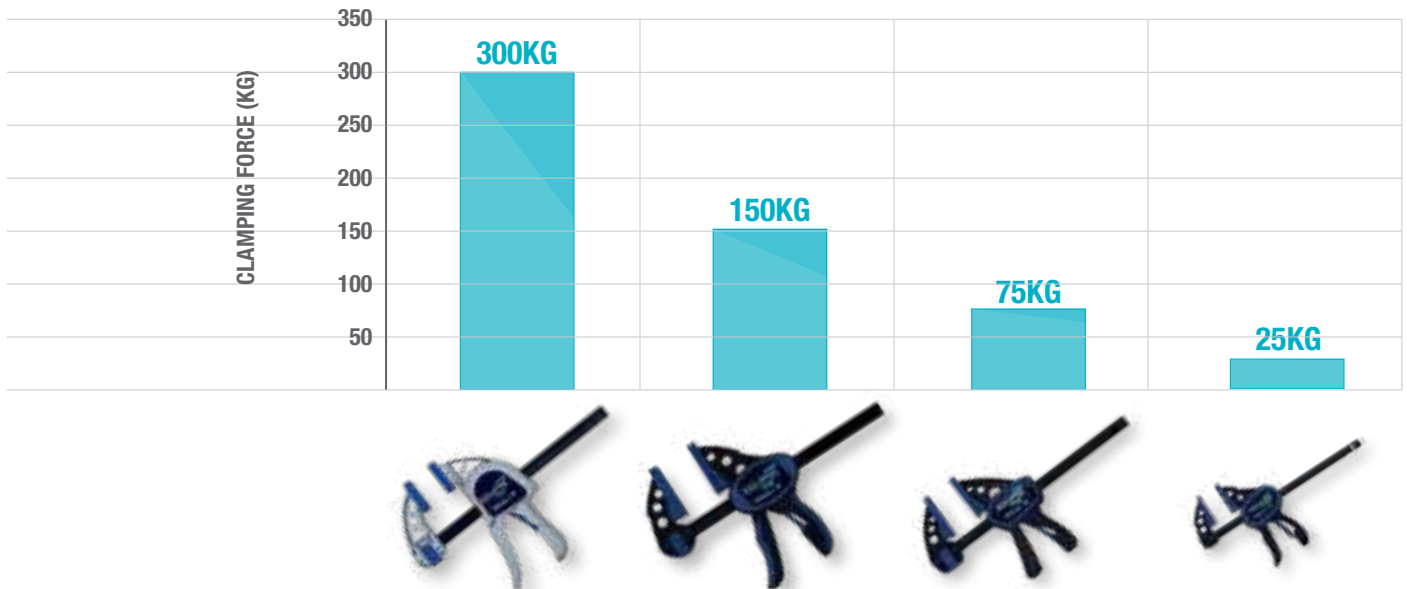
## One Handed Bar Clamps

Introducing the family of One-Handed Bar Clamps. Choose the best option for your needs from the Heavy-Duty, Original, Mini and Micro series, designed and developed to offer high quality, performance and value.

Eclipse One-Handed Bar Clamps are tools to trust.

# Workholding Solutions

## One Handed Bar Clamps

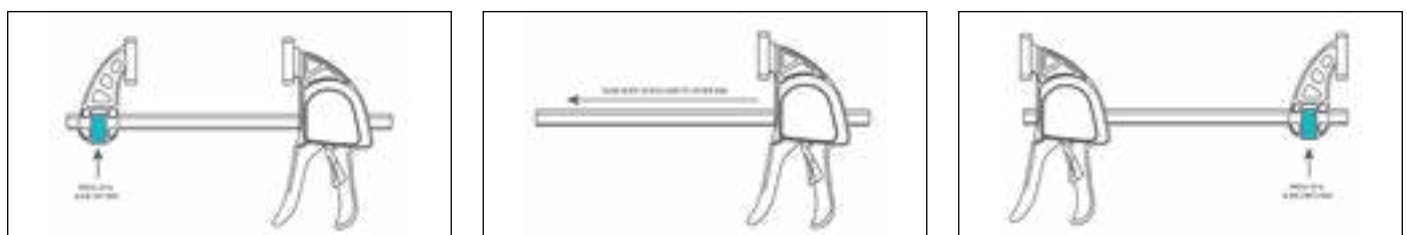


Part no	EOHBC-HD Series	EOHBC Original Series	EOHBC Mini Series	EOHBC Micro Series
Clamping force	300kg	150kg	75kg	25kg
Clamp capacity	150 – 900mm	150 – 900mm	150 – 300mm	100mm
Throat depth	85mm	85mm	60mm	36mm
Installation / Demolition / Heavy-Duty Clamping	★★★★	★	-	-
Medium duty clamping	★★	★★★★	-	-
Temporary hold-down quick clamping	★★	★★★★	★★★★	★★★★
Craft work & light duty clamping	-	★★	★★★★	★★★★
Work in small confined spaces	-	★	★★	★★★★
Use as a spreader	YES	YES	YES	NO

★ GOOD / ★★ BETTER / ★★★ BEST



**Quick change spreader function on heavy duty, original & mini - no nuts or screws to adjust, just press and slide**



**300KG  
CLAMPING  
FORCE**

## Heavy Duty One Handed Bar Clamps

A family of Heavy Duty One Handed Bar Clamps for a wide range of heavy duty to light duty wood and metal working applications.



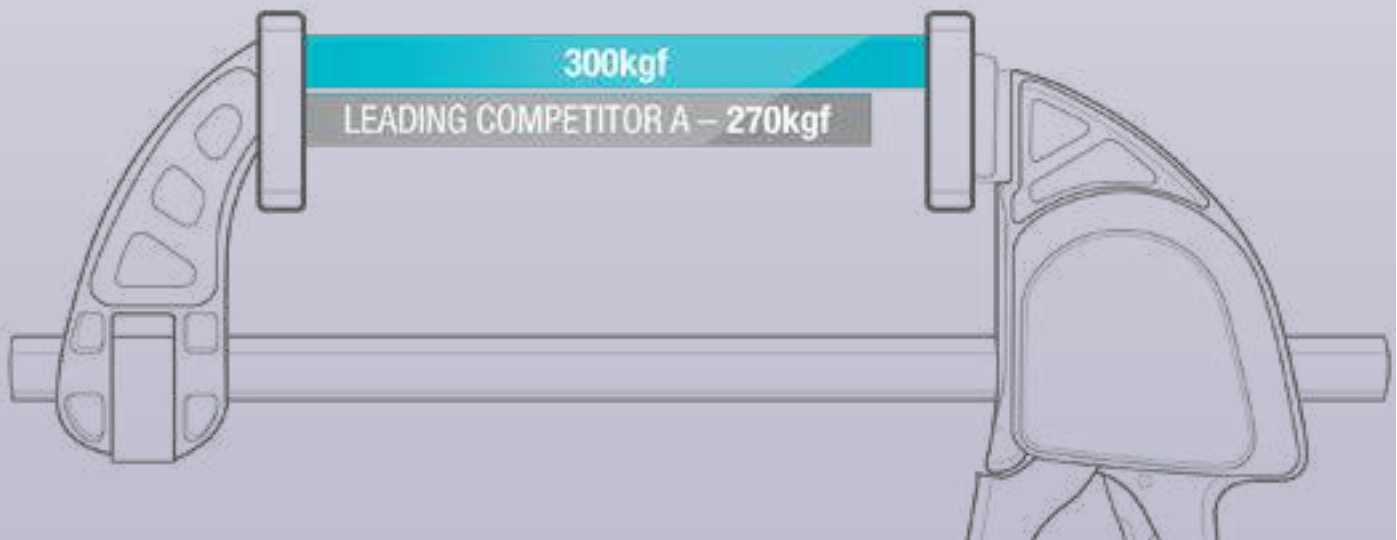
# Workholding Solutions

## Heavy Duty One Handed Bar Clamps

### EC-EOHBC-HD Heavy Duty One Handed Bar Clamps and Spreaders

Lightweight Aluminium frames and carbon steel bar are strong and durable and the clamps are capable of achieving up to 300 kg of sustainable holding force and are ideal for heavy duty work holding applications.

- The quick release insert trigger enables the clamp to be quickly positioned and released, whilst the easy push button system allows quick change from a clamp to a spreader.
- The removable pads stay fixed to the clamp giving an even distribution of clamping force across the workpiece protecting it from marking damage.



Part No.	Clamping Capacity	Min Spreading Capacity	Max Spreading Capacity	Pack Qty
EC-EOHBC6-HD	150mm	168mm	355mm	6
EC-EOHBC12-HD	300mm	168mm	507mm	6
EC-EOHBC18-HD	450mm	168mm	660mm	6
EC-EOHBC24-HD	600mm	168mm	813mm	6
EC-EOHBC36-HD	900mm	168mm	1117mm	6
EC-BCPADHD	SPARE PADS 2 PACK			1

**150KG**  
CLAMPING  
FORCE

## One Handed Bar Clamps

A family of One Handed Bar Clamps for a wide range of heavy duty to light duty wood and metal working applications.



# Workholding Solutions

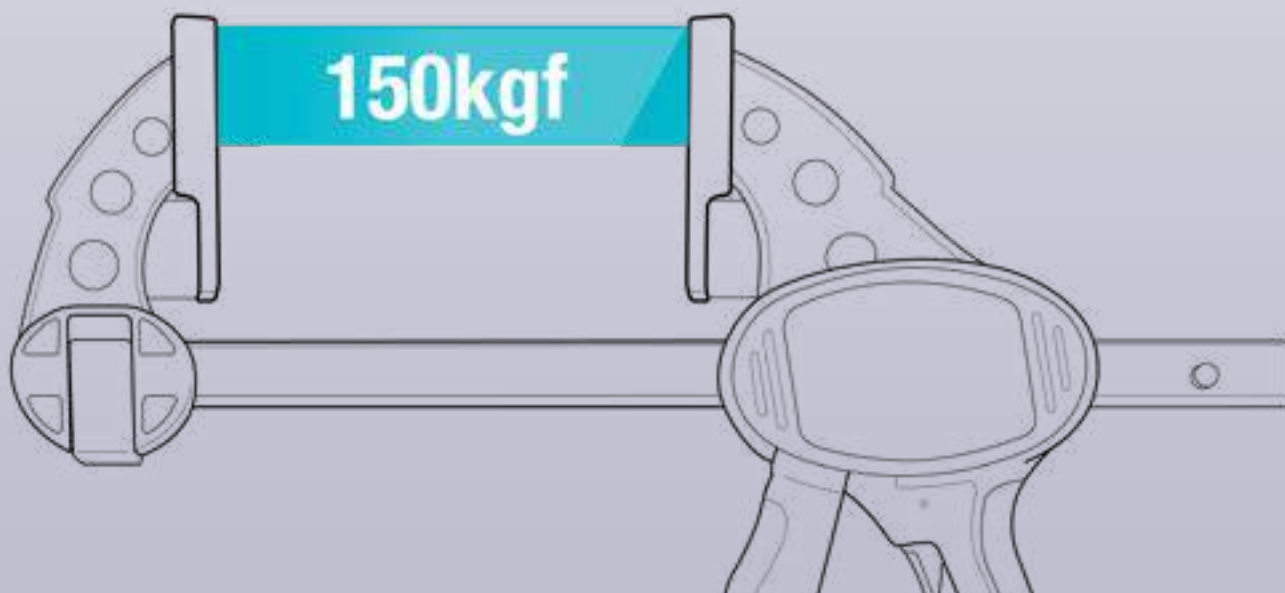
## Original One Handed Bar Clamps

### EC-EOHBC Original Series One Handed Bar Clamps & Spreaders

#### Average clamping force of 150kg.

- Quick release trigger enables the clamp to be quickly positioned and released, whilst the jaw release clip mechanism allows the jaw to be removed and re-attached to the other end of the bar, thus converting the clamp into a spreader.
- The carbon steel bar and reinforced nylon body make it both tough and durable, whilst the ergonomically designed, soft feel pistol grip handle fits easily into the hand.
- Toe-in feature means that, when fully closed, the jaws only meet at the top, thus providing an even clamping force across the whole depth of the workpiece. Non-marking pads firmly grip and protect the workpiece.

Throat  
Depth  
85mm



Part No.	Clamping Capacity	Min Spreading Capacity	Max Spreading Capacity	Pack Qty
EC-EOHBC6	150mm	168mm	340mm	20
EC-EOHBC12	300mm	168mm	495mm	12
EC-EOHBC18	450mm	168mm	645mm	12
EC-EOHBC24	600mm	168mm	800mm	12
EC-EOHBC36	900mm	168mm	1105mm	12
EC-BCPAD	SPARE PADS 2 PACK			1

### EC-EOHBC-MINI Mini One Handed Bar Clamps

Strong plastic construction and carbon steel bar are strong and durable and allow the MINI clamp to achieve up to 75 kg

- Ideal for small wood working projects, working in confined spaces and delicate work requiring light pressure.
- Easy push button system and allows a quick change from a clamp to a spreader.
- The quick release insert trigger enables the clamps to be quickly positioned and released and the removable pads stay fixed to the clamp giving an even distribution of clamping force across the workpiece protecting it from marking damage.

Throat  
Depth  
60mm



Part No.	Clamping Capacity	Min Spreading Capacity	Max Spreading Capacity	Pack Qty
EC-EOHBC6-MINI	150mm	123mm	275mm	16
EC-EOHBC12-MINI	300mm	123mm	427mm	16

### EC-EOHBC-MICRO Micro One Handed Bar Clamps

Strong plastic construction and carbon steel bar are strong and durable and allow the MICRO clamp to achieve up to 25kg clamping force.

- They are ideal for small wood working projects, working in confined spaces and delicate work requiring light pressure.
- The quick release insert trigger enables the clamps to be quickly positioned and released and the removable pads stay fixed to the clamp giving an even distribution of clamping force across the workpiece protecting it from marking damage.

Throat  
Depth  
36mm



Part No.	Clamping Capacity	Min Spreading Capacity	Max Spreading Capacity	Pack Qty
EC-EOHBC4-MICRO	100mm	N/A	N/A	20

# Workholding Solutions

## Spring Clamps



### SJ-SC Spring Clamps

#### Average clamping force of 50kg

- Heavy duty clamping force spring clamps with a chrome plated all steel construction
- Vinyl soft grip on clamping end allows for strong non slip clamping
- Vinyl soft grip handles for maximum comfort.



Part No.	Clamping Capacity	Pack Qty
SJ-SC100	100mm	2
SJ-SC150	150mm	2
SJ-SC225	225mm	2



## G Clamps

Eclipse has a range of heavy duty G clamps perfect for Industrial applications. G-clamp perfect for holding wood or metal workpieces, and often used in, but are not limited to, carpentry and welding.

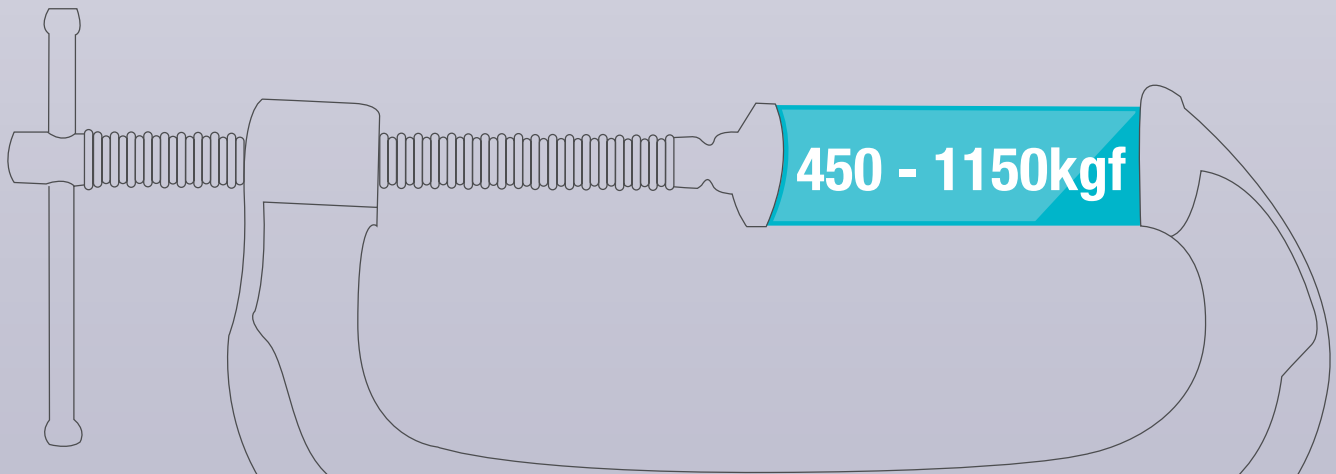
# Workholding Solutions

## G Clamps

### EC-E20 Heavy Duty G-Clamps

**Ideal for medium to heavy duty wood and metal working applications**

- Can achieve a clamping force up to 450 - 1136 Kgf depending on the size
- Guaranteed unbreakable malleable iron frame with a fast action twin start rolled acme thread
- Steel swivel shoe applies an even pressure, even on angled surfaces
- Tommy bar will bend before the frame can become over-stressed.



Part No.	Clamping Capacity	Frame Proof Loads	Pack Qty
EC-E20-3	75mm	455kg	6
EC-E20-4	100mm	545kg	6
EC-E20-6	150mm	636kg	6
EC-E20-8	200mm	773kg	2
EC-E20-10	250mm	773kg	2
EC-E20-12	300mm	1136kg	2

**350KG  
CLAMPING  
FORCE**

## **General Purpose Metalworking Clamp**

The Eclipse range of General Purpose Metalworking Clamps are ideal for general metal working and welding applications.

Available in a range of five sizes capable of achieving up to 350 kgf of clamping force.

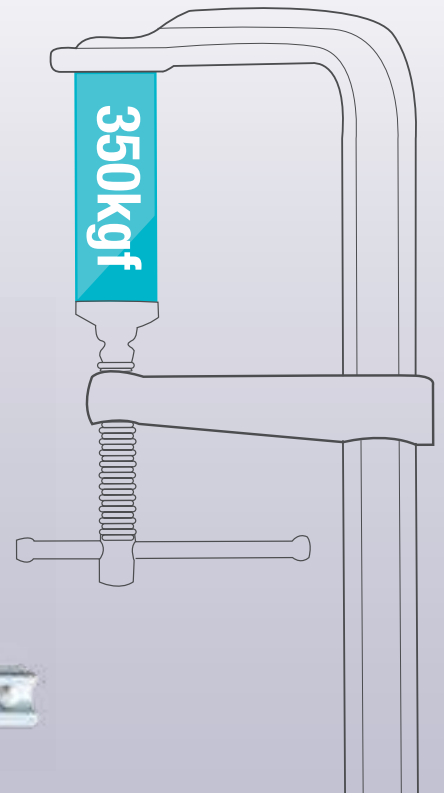
# Workholding Solutions

## Metalworking Clamps

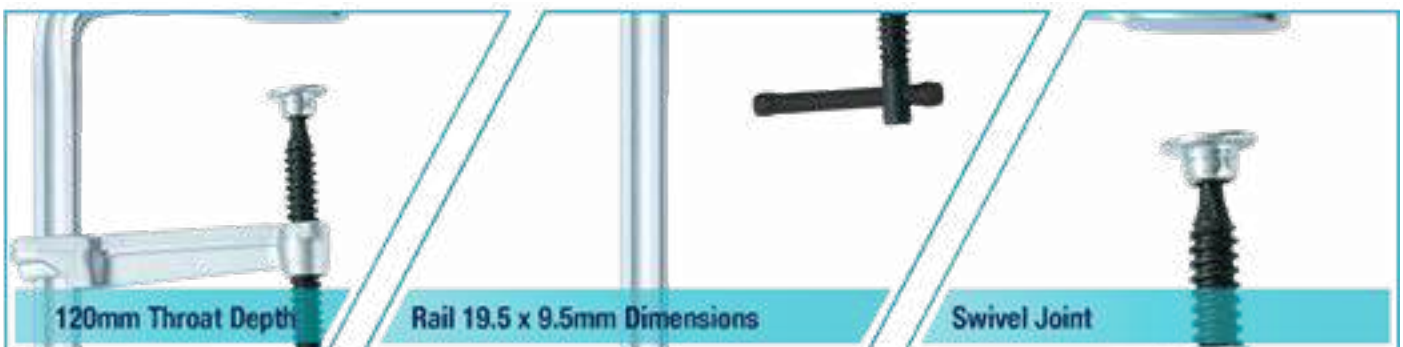
### EC-DF General Purpose Metalworking Clamp

Heavy duty metal working clamps capable of up to 350Kgf clamping force.

- High quality drop forged C45 steel bar 19mm wide x 9.5mm thick ensures optimum strength
- Clamping plate features a swivel ball joint which may be tilted giving the ability to clamp awkward shaped work pieces
- End stop to prevent clamp from slipping
- Zinc plating for high corrosion resistance
- Acme threaded spindle
- 120mm throat depth



Part No.	Clamping Capacity	Pack Qty
EC-DF20	200mm	5
EC-DF25	250mm	5
EC-DF30	300mm	5
EC-DF45	450mm	5
EC-DF60	600mm	5



**1200KG  
CLAMPING  
FORCE**

## Heavy Duty Metalworking Clamp

The Eclipse range of Heavy Duty Metal working Clamps are ideal for heavy duty metal working and welding applications.

Available in five sizes capable of achieving up to 1200 kgf of clamping force.

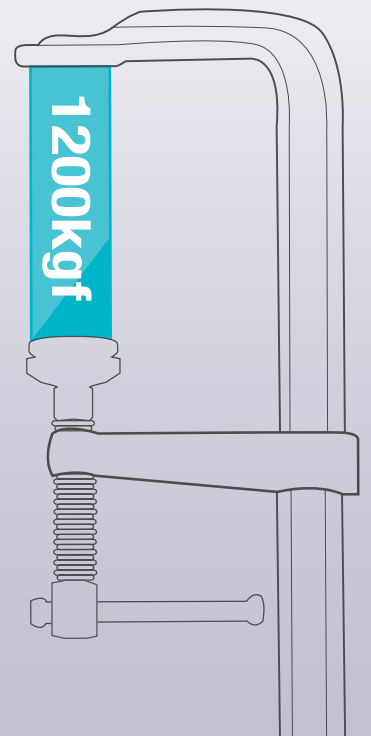
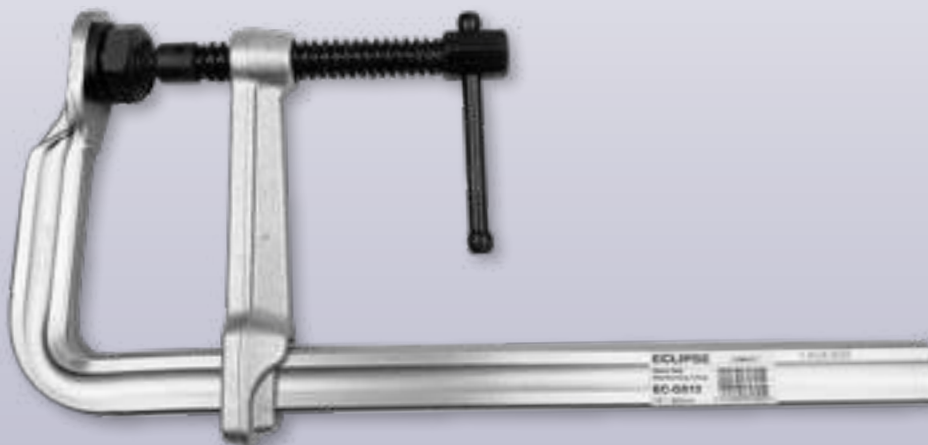
# Workholding Solutions

## Heavy Duty Metalworking Clamps

### EC-GS Heavy Duty Metalworking Clamp

Heavy duty metal working clamps capable of up to 1200Kgf clamping force.

- High quality drop forged steel bar 30mm wide x 15mm thick ensures optimum strength. A hex design screw end reinforces clamping.
- Acme threaded spindle
- Heat treated replaceable circular clamping plates to withstand heavy duty working
- Zinc plating for high corrosion resistance
- Full ball swivel joint allows plate to be tilted 35° for clamping awkward shaped workpieces
- Safety end stop to prevent sliding of clamping
- Socket/Spanner drive handle



Part No.	Clamping Capacity	Pack Qty
EC-GS10	250mm	5
EC-GS12	300mm	5
EC-GS16	400mm	5
EC-GS20	500mm	5
EC-GS24	600mm	5
EC-GSCP	Spare Clamping Pad	



**1000KG  
CLAMPING  
FORCE**

## T- Bar and Sash Clamps

The Eclipse range of Sash & T-Bar Clamps are perfect for a variety of large scale clamping jobs in metal and wood working.

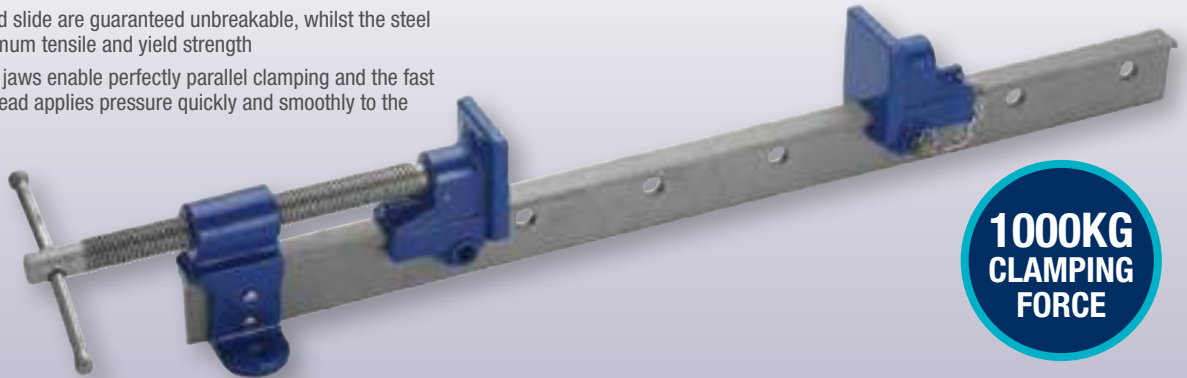
# Workholding Solutions

## T-Bar & Sash Clamps

### EC-ETBR T-Bar Clamps

#### Average clamping force of 1000kg

- The drilled feet in the fixed head enable the clamp to be mounted to a workbench
- Ductile head and slide are guaranteed unbreakable, whilst the steel bar offers maximum tensile and yield strength
- Slightly tapered jaws enable perfectly parallel clamping and the fast action rolled thread applies pressure quickly and smoothly to the workpiece.



Part No.	Clamping Capacity	Bar Length	Pack Qty
EC-ETBR42	1070mm	1220mm	4
EC-ETBR48	1220mm	1370mm	4
EC-ETBR54	1370mm	1525mm	4
EC-ETBR66	1680mm	1830mm	4
EC-ETBR78	1980mm	2135mm	4

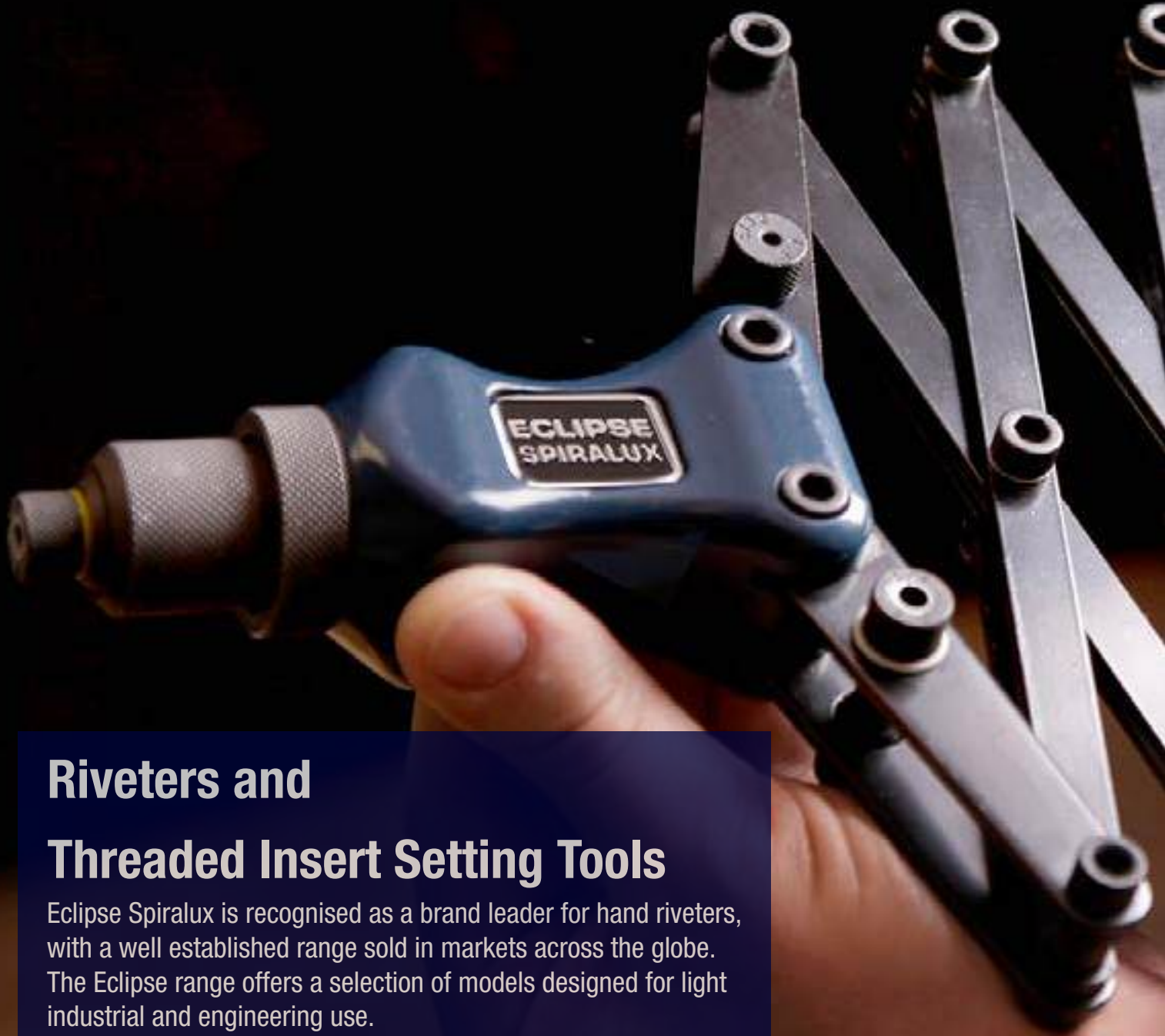
### EC-ESC Sash Clamps

#### Sash clamps have an average clamping force of 500kg

- The ductile head and slide are guaranteed unbreakable, whilst the steel bar offers maximum tensile and yield strength
- Slightly tapered jaws enable perfectly parallel clamping and the fast action rolled thread applies pressure quickly and smoothly to the workpiece.



Part No.	Clamping Capacity	Bar Length	Pack Qty
EC-ESC24	600mm	760mm	6
EC-ESC30	760mm	915mm	6
EC-ESC36	915mm	1070mm	6
EC-ESC42	1070mm	1220mm	6
EC-ESC48	1220mm	1370mm	6
EC-ESC54	1370mm	1525mm	6
EC-ESC66	1680mm	1830mm	6



## Riveters and

## Threaded Insert Setting Tools

Eclipse Spiralux is recognised as a brand leader for hand riveters, with a well established range sold in markets across the globe. The Eclipse range offers a selection of models designed for light industrial and engineering use.

The Compact Series has been developed to complement the more traditional range. They are smaller and lighter than traditional hand riveters but are equally strong and durable. They are quick and easy to use and require considerably less physical effort to pop rivets.

# Riveters & Insert Tools



## EC-2750C Compact Lazy Tong Riveter

25% lighter, smaller and easier to handle than traditional sized lattice riveters. Weighs 1.50Kg compared to a 1.90Kg traditional lattice riveter. Delivers more power with less effort. Much easier on the arms and shoulders when popping lots of rivets.



- Strong 3-piece alloy steel jaw mechanism with hexagonal internal structure for a longer life and easy operating
- Aluminium alloy ergonomic design body and ABS handle for comfortable handling
- Lattice section is held together with nuts and bolts for extra strength and durability
- Manually adjustable round knurling sleeve to easily adjust the working length of each stroke, ideal for use in restricted spaces
- Pops up to 6.4mm Aluminium, Steel and Stainless Steel rivets
- Contains rivet noses for use with 2.4mm, 3.2mm, 4.0mm, 4.8mm and 6.4mm aluminium and steel rivets
- Noses are colour coded by size for easy identification and may be conveniently changed by hand with no need for extra tools
- To operate, pre-drill holes into the items being joined together, the optimum drill size is 0.1mm bigger than the size of the rivet
- Replacement jaws available

Part no.	Description	Qty
EC-2750C	Compact Lazy Tong Riveter	5
Part no.	Spare Parts	Qty
EC-CSJ3	Jaw Set (x3)	1

## EC-2760C Compact Lever Arm Riveter

Up to 40% Lighter and more compact in size than traditional long arm riveters. Requires less effort and is easier to use. Much easier on the arms and shoulders when popping lots of rivets



- Strong 3-piece alloy steel jaw mechanism with hexagonal internal structure for a longer life and easy operating
- Reinforced 2mm thick Carbon Steel heat-treated handle for extra strength and durability
- Ergonomically designed handles for comfortable use
- Features a convenient rivet stem collector for protection and safety
- Pops up to 6.4mm Aluminium, Steel and Stainless Steel rivets
- Contains rivet noses for use with 2.4mm, 3.2mm, 4.0mm, 4.8mm and 6.4mm aluminium and steel rivets
- Noses are colour coded by size for easy identification and may be conveniently changed by hand with no need for extra tools
- To operate, pre-drill holes into the items being joined together, the optimum drill size is 0.1mm bigger than the size of the rivet
- Replacement jaws available

Part no.	Description	Qty
EC-2760C	Compact Lever Arm Riveter	5
Part no.	Spare Parts	Qty
EC-CSJ3	Jaw Set (x3)	1

# Riveters & Insert Tools

## Compact Series

### EC-2760C-M Compact Mini Lever Arm Riveter

Up to 40% Lighter and more compact in size than traditional long arm riveters. Requires less effort and is easier to use. Much easier on the arms and shoulders when popping lots of rivets



- Strong 3-piece alloy steel jaw mechanism with hexagonal internal structure for a longer life and easy operating
- Reinforced 2mm thick Carbon Steel heat-treated handle for extra strength and durability
- Ergonomically designed handles for comfortable use
- Pops up to 6.4mm Aluminium, Steel and Stainless Steel rivets
- Contains rivet noses for use with 2.4mm, 3.2mm, 4.0mm, 4.8mm and 6.4mm aluminium and steel rivets
- Noses are colour coded by size for easy identification and may be conveniently changed by hand with no need for extra tools
- To operate, pre-drill holes into the items being joined together, the optimum drill size is 0.1mm bigger than the size of the rivet
- Replacement jaws available

Part no.	Description	Qty
EC-2760C-M	Compact Mini Lever Arm Riveter	5

Part no.	Spare Parts	Qty
EC-CSJ3	Jaw Set (x3)	1

### EC-2730C Compact Snub Nose Riveter

25% lighter, and easier to handle than traditional gun riveters. Requires less effort and is easier to use. Perfect for use in restricted spaces, fits conveniently into toolboxes





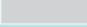


- Compact size is particularly suitable for operating in difficult to access areas
- Capable of popping up to 4.8mm rivets in Aluminium and Steel. Able to pop 4.0mm rivets in Stainless Steel.
- 3 piece alloy steel jaw mechanism with internal hexagonal grip design
- Aluminium alloy ergonomic body with soft grip handles
- Interchangeable colour-coded noses for easy identification suitable for use with 2.4mm, 3.2mm, 4.0mm, 4.8mm rivet
- Noses can be changed by hand with no need for extra tools
- Sleeve is not adjustable so no need to spend time altering the working length
- Replacement jaws available

Part no.	Description	Qty
EC-2730C	Compact Snub Nose Riveter	5

Part no.	Spare Parts	Qty
EC-CSJ3	Jaw Set (x3)	1

## Colour Coded Rivet Sizes

Colour Code	Rivet Sizes	Drill Sizes
 Red	2.4mm	2.5mm
 Green	3.2mm	3.3mm
 Blue	4.0mm	4.1mm
 Yellow	4.8mm	4.9mm
 Grey	6.4mm	6.5mm

## Performance on Test

### EC-2750C versus traditional Lattice Style Riveters

Popping 200 x 5mm Aluminium Rivets			
2750C		Traditional Lattice Style Riveter	
Kgf Force	Pulls	Kgf Force	Pulls
8.2	2	11.5	1-2

Popping 10 x 6mm Aluminium Rivets			
2750C		Traditional Lattice Style Riveter	
Kgf Force	Pulls	Kgf Force	Pulls
14	2-3	20	2

Popping 10 x 5mm Steel Rivets			
2750C		Traditional Lattice Style Riveter	
Kgf Force	Pulls	Kgf Force	Pulls
13.1	3	20	2

## Performance on Test

### EC-2760C-M versus traditional Gun Riveters

Popping 10 x 5mm Aluminium Rivets			
2760C-M		Traditional Gun Riveter	
Kgf Force	Pulls	Kgf Force	Pulls
12.6	2	31.5	4

## Performance on Test

### EC-2760C versus traditional Long Arm Riveters

Popping 200 x 5mm Aluminium Rivets			
2760C		Traditional Long Arm Riveter	
Kgf Force	Pulls	Kgf Force	Pulls
9.7	2	9.8	1

Popping 10 x 6mm Aluminium Rivets			
2760C		Traditional Long Arm Riveter	
Kgf Force	Pulls	Kgf Force	Pulls
17.3	2	19.1	2

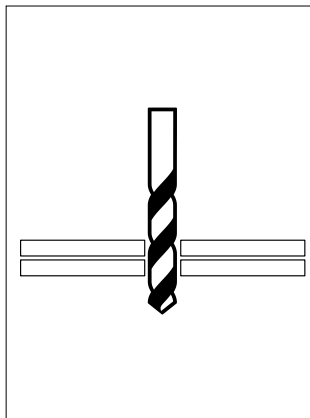
Popping 10 x 5mm Steel Rivets			
2760C		Traditional Long Arm Riveter	
Kgf Force	Pulls	Kgf Force	Pulls
16.8	2-3	17.3	3

## Performance on Test

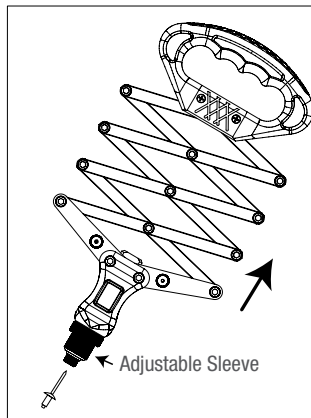
### EC-2730C versus traditional Gun Riveters

Popping 10 x 5mm Aluminium Rivets			
2730C		Traditional Gun Riveter	
Kgf Force	Pulls	Kgf Force	Pulls
12.6	2	31.5	4

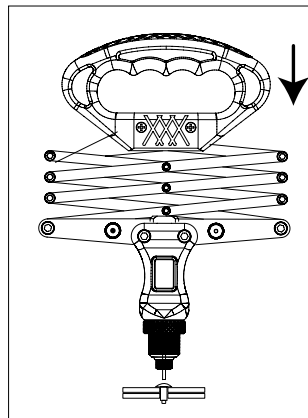
## EC-2750C User instructions



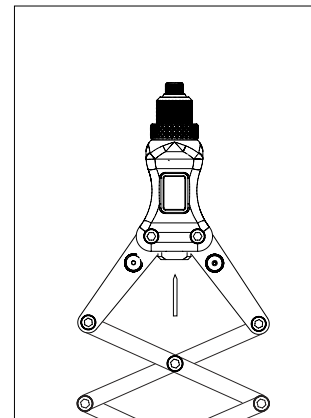
Drill hole through materials to be riveted.



Extend Lazy Tong Riveter, insert rivet and adjust sleeve if required.



Align rivet, push handle to fix rivet. Repeat until rivet snaps and then remove riveter.

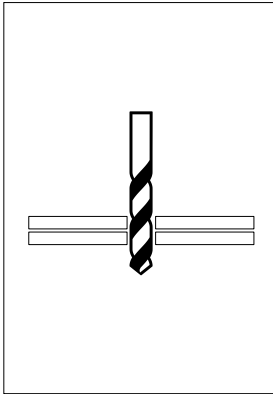


Open lattice fully to remove rivet stem.

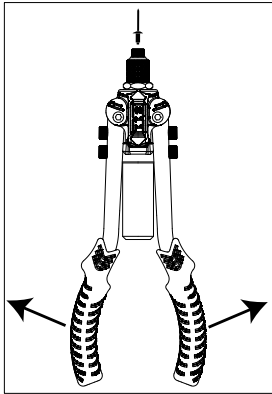
# Riveters & Insert Tools

## Compact Series

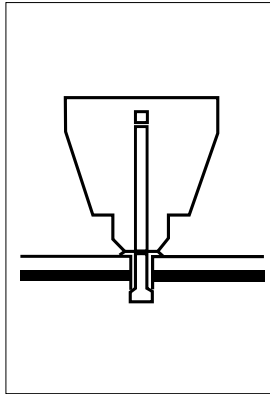
### EC-2760C User instructions



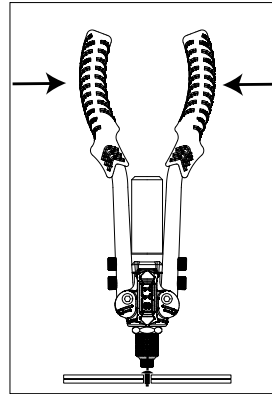
Drill hole through materials to be riveted.



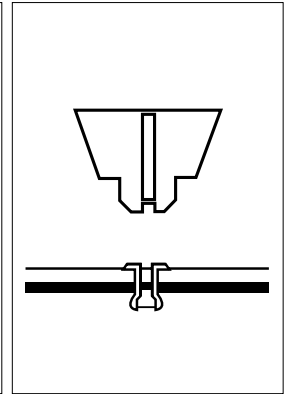
Open handles to insert rivet.



Insert the riveter into the hole.

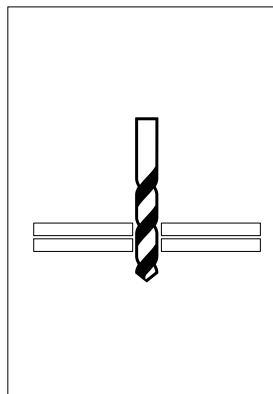


Close handles to fix rivet. Repeat until rivet snaps. The rivet stem falls into the collector.

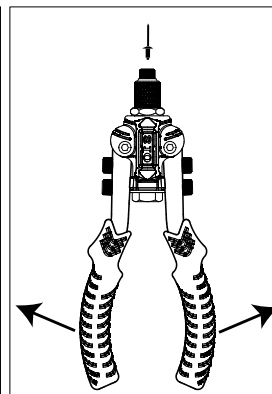


Remove riveter and open handles fully to remove rivet stem.

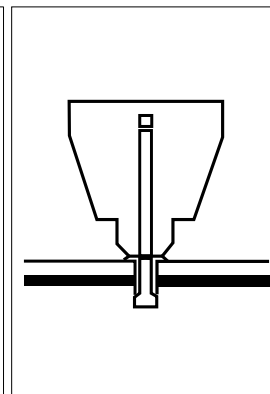
### EC-2760C-M User instructions



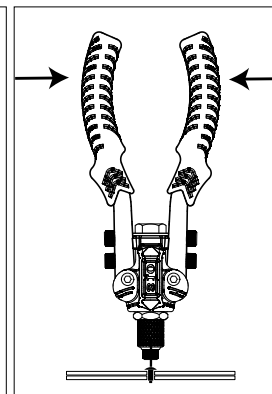
Drill hole through materials to be riveted.



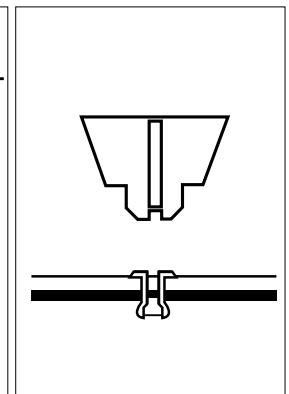
Open handles to insert rivet.



Insert the riveter into the hole.

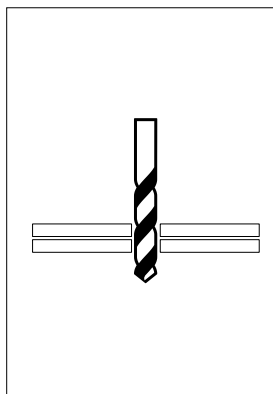


Close handles to fix rivet. Repeat until rivet snaps.

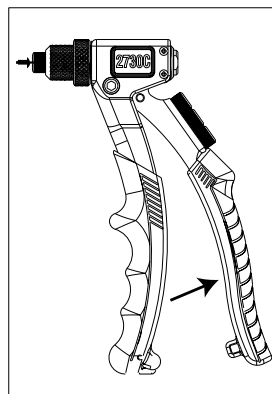


Remove riveter and open handles fully to remove rivet stem.

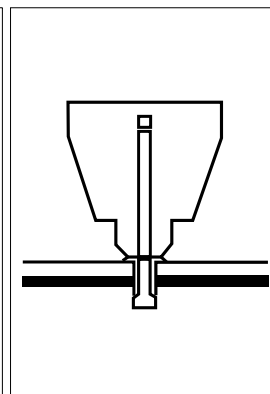
### EC-2730C User instructions



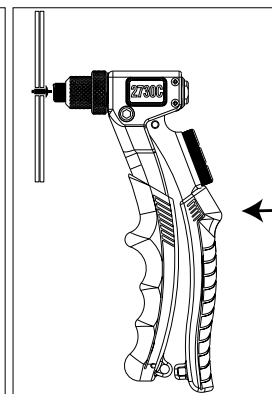
Drill hole through materials to be riveted.



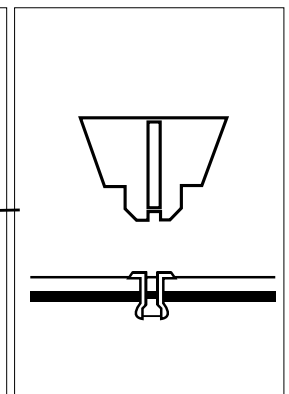
Open handle to insert rivet.



Insert the riveter into the hole.



Squeeze handle to fix rivet. Repeat until rivet snaps.



Remove riveter and open handles fully to remove rivet stem.

Compact Series

**MORE POWER**  
**LESS EFFORT**



# Riveters & Insert Tools

## Compact Series

### EC-2745C Compact Threaded Insert Tool Kit (M3-M10)

The Compact Series has been developed to complement the more traditional range. Easily sets up to M10 Nutserts with more power and less effort than traditional Insert Tools. Allows thin sheet nutserts to be placed quickly and easily by hand. They are invaluable to Plant and Maintenance Engineers, and also for DIY, for simple assembly of threaded inserts or anchor nuts.

- Easily sets up to M10 Nutserts with more power and less effort than Traditional Insert Tools
- Creates a strong, permanent and reliable threaded fixing for use with bolts, studs and screws etc.
- Ideal for inserting threaded nuts into steel, aluminium, plastic and wood
- Suitable for steel, stainless steel and aluminium nutserts
- Steel body, Chrome Molybdenum alloy steel mandrels and reinforced 2mm heat treated Carbon steel handles for strength and durability
- Features a knurled carbon steel knob to easily unload nutserts
- Small and compact. Ideal for restricted areas
- Ergonomic handles for extra comfort
- Requires access to only one side of the workpiece
- Colour coded mandrels for easy selection



#### Kit Contains:

- Threaded Insert Tool x 1
- Interchangeable Mandrels x 6: M3, M4, M5, M6, M8 and M10
- Multi-functional spanner x 1



#### Threaded Insert Nose Bush/Mandrel Conversion Kit

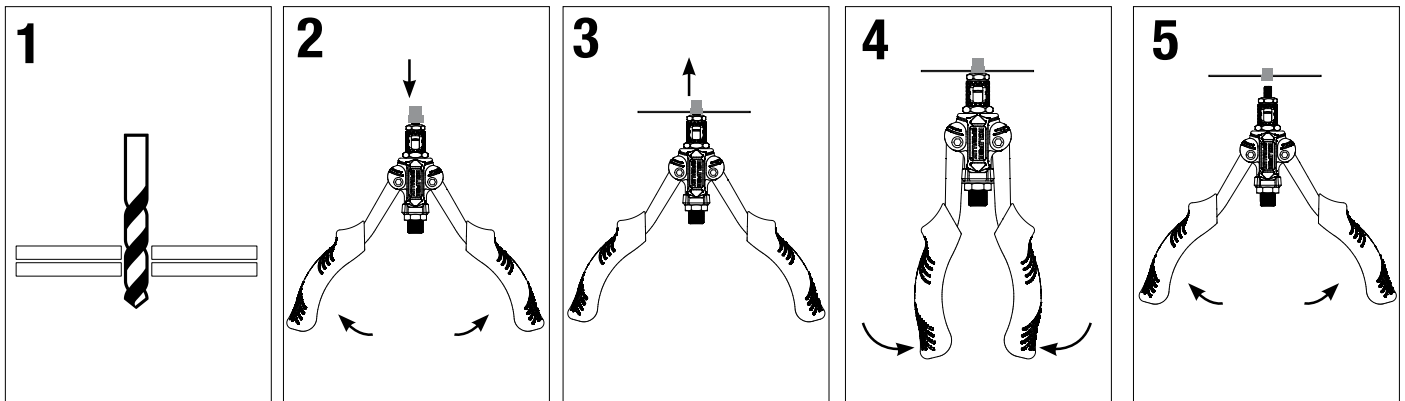
Part No.	Thread Size
EC-2745C-M3	M3 (3mm)
EC-2745C-M4	M4 (4mm)
EC-2745C-M5	M5 (5mm)
EC-2745C-M6	M6 (6mm)
EC-2745C-M8	M8 (8mm)
EC-2745C-M10	M10 (10mm)

#### \*Typical drill hole sizes

Mandrel Sizes	Drill Sizes
M3	6.1mm
M4	6.5mm
M5	7.2mm
M6	9.6mm
M8	10.6mm
M10	13.1mm

\*Check with nutsert supplier for appropriate hole size.

### EC-2745C User instructions



Pre-drill appropriate size hole in the material to be inserted

Open the handles and fit nutsert onto mandrel

Insert tool into pre-drilled hole

Close the handles to set nut in position

Open the handles and turn the knob clockwise to unload the insert tool from the inserted nut



### EC-2720 Heavy Duty Long Nose Riveter

A versatile variation of the 2730, with an extra long nose to facilitate access in recessed situations such as corrugated sheet. Supplied with 4 interchangeable noses.



Part No.	For use with rivet sizes:	Pack Qty.
EC-2720	3.2mm, 4.0mm, 4.8mm	1

### EG-2061 DIY Riveter Kit

General purpose riveter, equipped with 4 interchangeable noses.

Cast alloy body, with slip guarded comfort handles. NOT suitable for stainless steel rivets.



Part No.	For use with rivet sizes:	Pack Qty.
EG-2061	2.4mm, 3.2mm, 4.0mm, 4.8mm	12

# Riveters

## Traditional Series

Manually operated Riveters suitable for maintenance and assembly operations.  
Threaded Insert Tools and spare parts for maintenance operations.

### EC-2745 Threaded Insert Setting Tool Kit

Boxed kit containing Threaded Insert Setting Tool and M4, M5, M6 and M8 threaded inserts.

Thin sheet setting tool designed to enable threaded nut inserts to be set easily by hand. Invaluable to maintenance engineers for on-the-spot repairs. Supplied in storage wallet complete with M4, M5, M6 and M8 nose bushes and mandrels.

- Insertion of permanent load bearing threads in materials from 0.5mm to 3.25mm
- Simple set up and easy uniform stroke allows a nutsert to be set in thin sheet materials without causing surface damage
- A comprehensive range of conversion kits and inserts are available
- One side application
- Flush mounting
- Permanent thread
- Moisture resistant
- Vibration resistant
- Portable



#### Insert Tool Spares - SPECIAL ORDER ONLY

##### Threaded Insert Nose Bush/Mandrel Conversion Kit

Part No.	Thread Size	Pack Qty.
EC-CK3	M3 (3mm)	10
EC-CK4	M4 (4mm)	10
EC-CK5	M5 (5mm)	10
EC-CK6	M6 (6mm)	10
EC-CK8	M8 (8mm)	10





## Industrial Hammers

Eclipse industrial hammers offer a quality solution for the industrial sector. We offer soft faced, dead blow & normalised hammers in a full range of sizes & weights. Normalised hammers incorporate a softened steel head that deforms or mushrooms on repeated impacts rather than potentially fracturing or chipping.

# Industrial Hammers

## Normalised

### EC-NPBPH Normalised Ball Pein Hammers

Ideal for engineering & in metal work for striking punches & chisels

- Drop forged steel head, Annealed/Normalised to 20-30HRC
- Softer/Normalised heads reduce chipping or splitting
- Batch testing certificate available on request
- Ergonomic anti-shock handle with TPR grips
- Tether loop in handle



Part No.	Handle Length	Weight	Pack Qty
EC-NPBPH24	320mm	680g	5
EC-NPBPH32	320mm	900g	5

### EC-NPSN Normalised Sledge Hammers

Normalised sledge hammers are designed for heavy industry mining, plant shut down & all environments where safety is paramount.

- Drop forged steel head, Annealed/Normalised to 20-30HRC
- Soft face that will mushroom to reduce chipping or splitting
- Head mechanically pinned to full length solid fibreglass handle
- Tough High Density Polypropylene outer cover with thermoplastic rubber grips
- Built in over strike protection
- Tether loop in handle

Part No.	Handle Length	Weight	Pack Qty.
EC-NPS4N	330mm	2.1kg	2
EC-NPS7N	830mm	3.1kg	2
EC-NPS10N	830mm	4.5kg	2
EC-NPS14N	830mm	6.3kg	2



## EC-NICH4N Normalised Club Hammer

**Normalised club hammer ideal for heavy industry mining, engineering applications & all environments where safety is paramount.**

- Indestructible vulcanized rubber handle features 4 spring steel rods for ultimate durability & protection from over strikes.
- Rods are locked using a steel locking plate to ensure the head is never dislodged.
- Drop forged steel head, annealed/normalised to 15 - 30HRC to reduce chipping or splitting
- Vulcanized rubber handle absorbs impact and vibration, reducing user fatigue.
- Tether loop in handle



Part No.	Handle Length	Weight	Pack Qty
EC-NICH4N	250mm	2.5kg	6

## EC-PCD Dead blow Hammers

**Dead blow hammers are designed for use in engineering and industrial sector. Delivers more force without marring critical components.**

- Dead blow feature minimises rebound and concentrates the force of the blow
- Polyurethane dead blow hammers are encapsulated from handle to head in a tough, durable PUR material.
- Hardness of outer layer 90-95A
- Steel shot filled head.



Part No.	Size	Weight	Pack Qty
EC-PCD50	50mm	940g	6
EC-PCD60	60mm	1.4kg	6

# Industrial Hammers

## Dead blow

The head contains fine steel shot which transmits the inertia of the hammer blow into the material rather than losing force through rebound...

### EC-SFDN Soft Faced Dead blow Hammers

Soft faced dead blow hammers incorporate non-marking Nylon or PVC striking faces for protection of work surfaces.

- Dead blow feature minimises rebound and concentrates the force of the blow
- Fully welded head and steel handle incorporates a soft TPE grip which absorbs vibration

Part No.	Size	Weight	Tips Included	Pack Qty
EC-SFD25N	25mm	430g	Nylon	6
EC-SFD40N	40mm	850g	Nylon	6
EC-SFD50N	50mm	1090g	Nylon	6
EC-SFD60N	60mm	1650g	Nylon	6

#### Replacement Tips

Part No.	Size	Type
EC-DBT25N	25mm	Nylon Tip
EC-DBT40N	40mm	Nylon Tip
EC-DBT50N	50mm	Nylon Tip
EC-DBT50P	50mm	PVC Tip
EC-DBT60N	60mm	Nylon Tip
EC-DBT60P	60mm	PVC Tip





## Eclipse Measuring

Achieve precise angle measurements with Eclipse Combination Squares and Sliding Bevel Sets. Designed for accuracy and durability, these tools are perfect for marking, measuring, and transferring angles in woodworking, metalwork, and general construction.

# Measuring Bevels & Squares

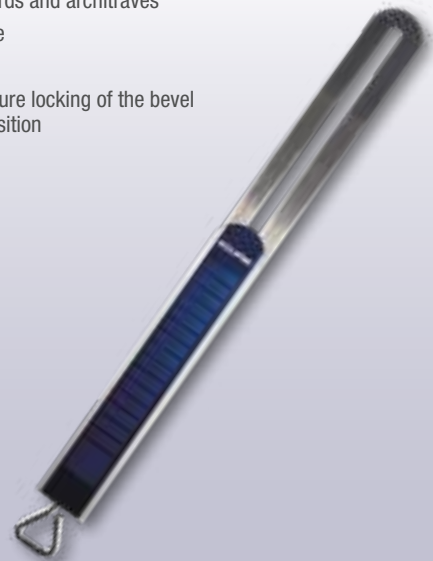
## EC-50-470R Combination Square 300mm

- Hardened stainless steel rule
- Alloy head
- Metric & imperial graduations
- Level & scribe



## EC-ESB250 Sliding Bevel - 250mm

- Great for making furniture, putting up shelves or fixing skirting boards and architraves
- Carbon steel blade
- Aluminium base
- End screw for secure locking of the bevel in the required position



## EC-50-460R Combination Set

- Stainless steel rule
- Graduated in metric and imperial
- Spirit level, scribe and knurled brass lock nut
- Includes Square, Protractor & Center head







## Eclipse

### Engineers Tools

Boast a comprehensive range, featuring essential implements such as punches, scrapers, and scribes. Designed for professionals, these precision tools provide the reliability and durability needed for engineering tasks, ensuring accuracy and efficiency in various applications.

## Engineers' File 3 Piece Sets

Essential workshop tools for smoothing, deburring and shaping a range of materials including metals and wood, whilst removing any unwanted material after cutting or sharpening.

- Hardened and tempered blades for strength and durability
- Ergonomic handles for a firm and comfortable grip
- Course first/bastard cut typically used first for quick removal of material
- Medium/second cut used for finer finish



Part No.	Blade Type	Contains	Pack
EC-3FILEB	First Cut/Bastard 200mm	Flat, Round & Half Round	5
EC-3FILE2	Second Cut 200mm	Flat, Round & Half Round	5

# Engineers' Tools

## Files & Scrapers

Hand scrapers are designed for the removal of high spots on machined surfaces to give a smoother surface on slideways, bearings, cast iron surface plates and precision marking out plates..

### Engineers Scrapers

Suitable for toolroom and small engineering work.



#### Individual Scrapers

Part No.	Blade Length	Cutting Edge	Pack Qty.
EC-96A	100mm (4")	Three Square	5
EC-97A	140mm (5½")	Three Square	5
EC-96B	100mm (4")	Flat	5
EC-97B	150mm (6")	Flat	5
EC-96C	100mm (4")	Curved ½ Round	5
EC-97C	150mm (6")	Curved ½ Round	5
EC-97D	200mm (8")	Curved ½ Round	5

### Bearing Scrapers

Suitable for removing high spots on bearings.



Part No.	Overall Length	Blade Length	Pack
EC-258/4	180mm (7¼")	100mm (4")	5
EC-258/6	240mm (9½")	150mm (6")	5
EC-258/8	290mm (11½")	200mm (8")	5

### Erector Scrapers

Suitable for large jobs or heavy engineering.

- Manufactured from chrome vanadium steel.



Part No.	Blade Length	Cutting Edge	Pack
EC-256	210mm (8¼")	Flat	5

All Eclipse punches are made from a high quality carbon steel. The point is hardened and tempered to withstand continuous use. All punches have well cut knurling to provide positive finger grip...

### Centre Punches

Used to indent, mark, scribe lines and to make indentations in work pieces prior to drilling. Punch point accurately ground to an angle of 90°



Part No.	Point Diameter	Length	Pack Size
EC-351A	3.2mm (1/8")	100mm (4")	10
EC-351B	4mm (5/32")	100mm (4")	10
EC-351C	4.8mm (3/16")	100mm (4")	10
EC-351D	6.35mm (1/4")	100mm (4")	10

### Parallel Punches

Used to punch out pins and dowels.



Part No.	Point Diameter	Length	Pack Size
EC-161AA	1.7mm (1/16")	100mm (4")	10
EC-161B	3.1mm (1/8")	100mm (4")	10
EC-161E	7.6mm (5/16")	150mm (6")	5
EC-161W	Wallet containing 1 of each	-	1 Set

### Auto Centre Punches

Delivers a punch when hand pressure applied to knurled head. One handed operation, hammer should not be used. Depth of impression adjusted by turning knurled head.



Part No.	Length	Operating Pressure	Pack Size
EC-65/171R	120mm	13.5-2.25kg (30-5lbs)	10
EC-E172	149mm	22.5-6.3kg (50-14lbs)	1



# Engineers' Tools

## Punches, Pin Vices & Chucks

### Pin Vices

Hand held tools designed for holding round materials. Hollow handle enables material greater than the overall length of the pin chuck to be used.

- Manufactured from high quality carbon steel

Part No.	Capacity	Overall Length	Pack
EC-121	0-1mm	75mm (3")	10
EC-122	0.75-1.5mm	85mm (3 <sup>11</sup> / <sub>32</sub> "	10
EC-123	1.4-3.1mm	95mm (3 <sup>3</sup> / <sub>4</sub> "	10
EC-124	3.1-5mm	105mm (4 <sup>1</sup> / <sub>8</sub> "	10
EC-120	Set of 121, 122, 123 and 124		1 Set



### Pin Chuck

Used for gripping very small drills, mainly on automatic lathes, where pin chuck does not revolve.

- Manufactured from high quality carbon steel

#### Pin Chuck

Part No.	Overall Length	Description	Pack
EC-160	65mm (9/16")	Chuck with 3 collets: 0.25-2.5mm capacities	6



Eclipse professional scribes used in metal working to mark lines in workpieces prior to machining. Jewellers' Screwdriver blades are hardened for long life...

**Pocket Scribes**

Available with either hardened steel or tungsten carbide points. Reversible point prevents tearing and snagging of clothing when clipped in a pocket.



Part No.	Closed Size	Description	Pack Size
EC-E220	89mm (3½")	Hardened Steel Point	10
EC-E225	89mm (3½")	Tungsten Carbide Point	10

**E222 Engineers' Scriber**

Double ended for marking out in confined spaces, e.g. grooves.



Part No.	Overall Length	Description	Pack Size
EC-E222	190mm (7½")	Double Ended	10

**E227 Machinists' Scriber**

Designed for machinists. For marking out in confined spaces, particularly on pre-machined workpieces.



Part No.	Overall Length	Description	Pack Size
EC-E227	114mm (4½")	1 Piece / Single Ended	10



# Engineers' Tools

## Scribers & Tap Wrenches

These tools are designed to hold engineers taps. By selecting the most suitable type and size it is possible to tap a hole more efficiently and minimise the risk of tap breakage...

### Trammel Heads

Supplied as 1 pair of heads. Suitable for laying out the distance between two points and scribing arcs and circles. To be used in conjunction with any wood off cut between 3/4" to 1 1/2" wide, minimum thickness of 3/8".



Part No.	Suitable For Beam Sizes	Pack Size
EC-33	19 x 38mm (3/8" - 1 1/2") Thick & 38mm (1 1/2") Wide	1 Pair

### Standard Bar Type Tap Wrench

Provides a comfortable and positive grip plus the sensitivity required when tapping a blind hole. Knurled locknut ensures a constant grip on the tap when in use.



Part No.	Jaw Capacity	Square AF		BA	BSW/BSF	UNC	UNF	Length	PK
		mm	ISO						
EC-E240	Min	1.5	M1	14	1/8	0	-	110mm	1
	Max	4.6	M6	0	1/4	12	1/4	105mm	
EC-E241	Min	2.0	M3	5	1/8	4	1/4	164mm	1
	Max	7.2	M12	0	1/2	12	1/2	156mm	
EC-E242	Min	2.5	M4	3	3/16	8	1/4	230mm	1
	Max	9.0	M16	0	5/8	12	5/8	220mm	

### Chuck Type Tap Wrench

Stepped jaws greatly extend range of taps for each wrench. Adjustable tommy bar for tapping close to a shoulder or other obstructions. Available in normal and long reach designs.



Part No.	Body Length	Width	Pack Size
EC-E141 Fixed Bar	50mm (1 5/16")	57mm (2 1/4")	1
EC-E142	65mm (2 1/16")	90mm (3 1/2")	1
EC-E143	90mm (3 5/8")	127mm (5")	1
EC-E145	165mm (6 1/2")	90mm (3 1/2")	1
EC-E146	245mm (10")	127mm (5")	1

Part No.	Jaw Capacity	Square AF		BA	BSW/BSF	UNC	UNF
		mm	ISO				
EC-E141	Min	1.0	M1	14	-	1	-
	Max	2.8	M3.5	4	1/8	6	-
EC-E142 & EC-E145	Min	2.0	M1	14	1/8	6	-
	Max	5.0	M6	0	1/4	12	1/4
EC-E143 & EC-E146	Min	3.0	M4	3	3/16	8	1/4
	Max	8.0	M12	0	1/2	12	1/2



Available from all professional tool stockists

These products are guaranteed against defects in manufacturing, subject to wear and tear and the provision of reasonable care and maintenance.

This does not affect your statutory rights.

**CONTACT  
US!**

**QEP Australasia**

**Tel: 1300 731 818**

**Email: [sjsales@qepaust.com.au](mailto:sjsales@qepaust.com.au)**

**Follow us on:**



**FIND OUT MORE AT [www.spearandjackson.com.au](http://www.spearandjackson.com.au)**



Distributed by:  
QEP Australasia  
68 Prosperity Way, Dandenong South, Victoria Australia 3175  
[www.qepaustralasia.com.au](http://www.qepaustralasia.com.au)

